

## **EX-TEC® HS 680**

**EX-TEC® HS 660 • 650 • 610**

Combination measuring devices  
for gas supply with integrated ethane detector



# EX-TEC® HS 680

## Cutting edge technology for gas supply

Products from the **EX-TEC® HS** family combine ergonomics with cutting edge technology.

Thanks to its innovative design this range offers the user the right instrument for different applications. You can find more details about the appliance configuration opposite.

All appliances from the **EX-TEC® HS** family meet the requirements of DVGW worksheet 465-4 (German Association of Gas and Water Specialists).



## Notes

### Ergonomics / operation

- Operated by jog dial, function keys and menu navigation
- Large matrix display with backlight
- Power supply via 4 changeable AA-size rechargeable batteries or disposable batteries
- Quick charging in 4 hrs, can also be charged without docking station
- PC communication via USB

### Safety

- Explosion protection: TÜV 07 ATEX 553353 X  $\text{Ex}$  II2G Ex d e ib IIB T4 Gb, IIC when used with carrying bag TG8
- Measuring function: BVS 09 ATEX G 001 X, PFG 08 G 002 X (measuring function **EX-TEC® HS 680, 650** only)

### Measuring technology

- Selective infrared sensors for hydrocarbons and carbon dioxide
- Fast and highly-sensitive semiconductive sensor
- Three optional electro-chemical sensors for oxygen and toxic gases
- Gas type setting: methane (standard), propane and butane (optional)
- Optional: ethane analysis to distinguish natural gas/swamp gas without any other accessories

## Applications

Application		Measurement ranges	Active principle
Inspection above ground		0 ppm – 10 % vol. CH <sub>4</sub>	Gas-sensitive semiconductor Infrared sensor
Measuring in bar holes		0.0 – 100 % vol. CH <sub>4</sub> 0 – 30 % vol. CO <sub>2</sub>	Infrared sensor Infrared sensor
Enclosed spaces		0 ppm – 100 % vol. CH <sub>4</sub>	Gas-sensitive semiconductor Infrared sensor
House		0 ppm – 100 % vol. CH <sub>4</sub>	Gas-sensitive semiconductor Infrared sensor
Explosion warning		0 – 100 % lower explosive limit CH <sub>4</sub>	Infrared sensor
Warning ExTox		0 – 100 % lower explosive limit CH <sub>4</sub> 0 – 5 % vol. CO <sub>2</sub> 0 – 25 % vol. O <sub>2</sub> (optional) 0 – 100 ppm H <sub>2</sub> S (optional) 0 – 500 ppm CO (optional)	Infrared sensor Infrared sensor Electro-chemical sensor Electro-chemical sensor Electro-chemical sensor
Measuring, gas purity		0.0 – 100 % vol. CH <sub>4</sub>	Infrared sensor
Ethane analysis		CH <sub>4</sub> , CH <sub>4</sub> , C <sub>2</sub> H <sub>6</sub> , C <sub>3</sub> H <sub>8</sub> (optional)	Gas-sensitive semiconductor / gas chromatograph

# EX-TEC® HS 680

## Increased safety and efficiency with innovative technology

The **EX-TEC® HS** product family helps the user clearly detect leaks in underground pipes.

To avoid costly and time-consuming pointless excavations, it must be absolutely certain that the gas is actually leaking from a natural gas pipeline. Locating the exact position of the leak also keeps shaft work to a minimum. **EX-TEC® HS** appliances offer new possibilities in this respect.

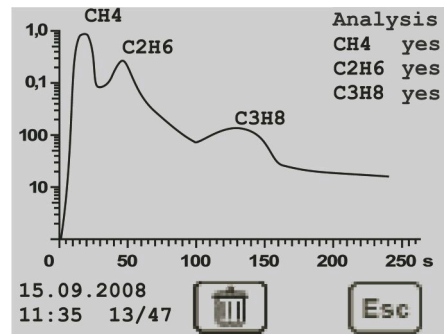
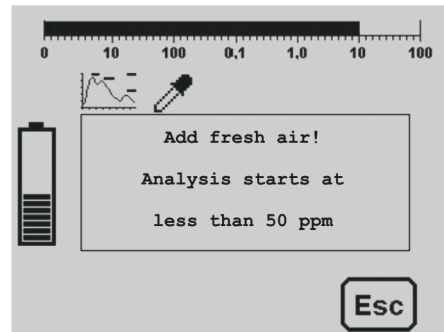
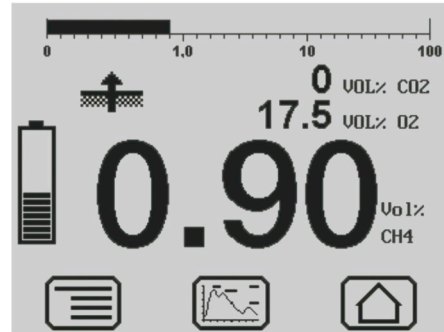
If the gas has dispersed over a wide area, it is often difficult to pinpoint the leak exactly. In many cases the gas gathers under fixed surfaces and spreads over long distances.

The optional oxygen sensor can also display the oxygen minimum at the same time as the methane maximum. This minimum, with its smaller diffusion area, is used to locate complex leaks more precisely.

The integrated ethane detector easily picks up whether the gas is natural gas or swamp gas. The user does not need any extra accessories or specialist knowledge.


The **EX-TEC® HS 680/660** guides the user through the ethane analysis with prompts.

The definitive result can be saved and further processed on the PC using the integrated USB port.



## Methane applications

### Choosing a model

Model	Inspection above ground 	House 	Explosion warning 	Warning ExTox 	Enclosed spaces 	Measuring in bar holes 	Measuring gas purity 
<b>EX-TEC® HS 680</b>	X	X	X	X	X	X	X
<b>EX-TEC® HS 660</b>	X	X			X	X	X
<b>EX-TEC® HS 650</b>			X	X		X	X
<b>EX-TEC® HS 610</b>						X	X

X = integrated

### Additional equipment

Model	Ethane detector	XT O <sub>2</sub> sensor	XT CO sensor	XT H <sub>2</sub> S sensor 100 ppm
<b>EX-TEC® HS 680</b>	O	O	O	O
<b>EX-TEC® HS 660</b>	O	O		
<b>EX-TEC® HS 650</b>		O	O	O
<b>EX-TEC® HS 610</b>		O		

O = optional



## Technical information

Detectable gases:	Gas database with calibration for methane, carbon dioxide and other gases, e.g. propane, butane
Operating time:	min. 8.0 hrs
Power supply:	4 NiMH batteries, rechargeable or 4 AA-size alkaline batteries
Protection rating:	IP54
Operating temperature:	-10 °C – +40 °C
Storage temperature:	-25 °C – +50 °C
Pressure:	950 hPa to 1100 hPa
Humidity:	15% r.h. to 90% r.h., non-condensing
Dimensions (W x D x H):	148 x 57 x 205 mm 253 mm (incl. supporting bracket)
Weight:	approx. 1000 g

## Accessories

- Charging equipment for 12 V~, 24 V= and 230 V~
- Docking station/wall mount
- System case
- Gas detection probes/localisation probes
- Test sets and test gases



## System case for network survey

- **EX-TEC® HS 680**
- Docking station TG 8
- AC/DC adapter
- Floating probe
- Flexible hand probe with probe hose
- Localisation probe
- Bell probe

Please contact us for a comprehensive quotation, including additional technical specifications and information on accessories.

# Services d'EURO-INDEX

EURO-INDEX est un fabricant, importateur et distributeur de diverses marques A dans le domaine des instruments de test et de mesure. Nous fournissons également une large gamme de services pour optimiser l'utilisation de ces instruments dans vos activités. Ces services comprennent naturellement l'entretien, la réparation et l'étalonnage des instruments, mais nous proposons aussi une assistance sous forme de formation via notre EURO-INDEX Academy et la location d'instruments.

## Centre de Service Agréé

EURO-INDEX est un Centre de Service Agréé pour toutes les marques représentées. Cela signifie que vos instruments sont pris en charge par des techniciens formés par le fabricant et disposant des outils et logiciels adéquats. Seules des pièces d'origine sont utilisées et la garantie de votre instrument, ainsi que les certifications (ATEX, EN50379, etc.) restent intactes.

## Laboratoire de maintenance et de calibrage

Le laboratoire des Pays-Bas est accrédité RvA selon la norme EN-ISO/IEC 17025. Cette accréditation est valable pour différentes grandeurs, telles que spécifiées dans le champ d'application associé au numéro d'accréditation K105. Les certificats de calibrage RvA sont acceptés à l'international et équivalents à ceux de BELAC.



## Service Mobile

Outre les laboratoires d'étalonnage fixes de Zaventem et de Capelle aan den IJssel, nous disposons également d'un laboratoire itinérant appelé "Service mobile". Nos services peuvent venir vers vous, en offrant une qualité équivalente.

## MQS®

MQS® est une formule d'entretien exclusive comportant un entretien et un calibrage périodiques de vos instruments de mesure à un coût fixe et faible. Via un portail Web gratuit ([monmq.be](http://monmq.be)), vous avez toujours accès à vos certificats de calibrage.

## Location d'instruments de mesure

- Vaste assortiment
- Précision démontrable par le certificat d'étalonnage actuel
- Conseils avisés
- Les instruments sont livrés avec leurs accessoires

## EURO-INDEX Academy

- Formations et séminaires
- Vidéos de démonstration et d'instruction
- Notes d'application



Comptoir de service



Entretien, réparation et calibrage



Formations et séminaires



Service Mobile

Sous réserve de modifications EURO-INDEX® FR 23001



**BELGIQUE**  
Chaussée de Louvain 607  
1930 Zaventem  
T: 02 - 757 92 44  
F: 02 - 757 92 64  
[sales@euro-index.be](mailto:sales@euro-index.be)  
[www.euro-index.be](http://www.euro-index.be)

**PAYS-BAS**  
Rivium 2e straat 12  
2909 LG Capelle a/d IJssel  
T: +31 - (0)10 - 2 888 000  
F: +31 - (0)10 - 2 888 010  
[verkoop@euro-index.nl](mailto:verkoop@euro-index.nl)  
[www.euro-index.nl](http://www.euro-index.nl)

