

SePem[®]

Noise loggers for monitoring
water pipe networks
sturdy – convenient – reliable



SePem® – sturdy – convenient – reliable

Detect water losses early

Leaks in water pipe networks can result in significant water losses. Thanks to systematic monitoring of the network with **SePem®** data loggers, you can reliably identify existing leaks and catch new ones early on – much faster than with conventional methods.

Systematic leak detection

The **SePem®** system comprises the **SePem® 01 Master** receiver as well as any number of data loggers; the **SePem® 100s** are preferable for mobile use whereas the **SePem® 150s** are designed for permanent use. They are magnetically attached to valve rod extensions, or to hydrants or other fittings in the pipe network. The microphone integrated in the logger converts the structure-borne noise in the line to a sound signal. This is cyclically recorded during times of low consumption – usually during the night between approx. 2:00 am and 4:00 am, when there is very little sound interference in the surrounding area, if any. On a leak-free line the noise level measured during this time is virtually zero. If there is a leak in the pipeline, the noise logger will measure values much different to zero, thus indicating a leak.



SePem® 100: data loggers for mobile use

The **SePem® 100** data loggers with integrated aerial are perfect for mobile use in the water pipe network. They are placed on fittings at measuring points in a specified section of network and record the level for a programmable period of time during the night – usually half an hour. The loggers are collected in the next day. The measurement data is transmitted to the **SePem® 01 Master** by radio. Noticeably high measurement values indicating a leak are immediately flagged up by an audible signal. This is a reliable way of detecting existing leaks. The data loggers are then successively inserted in other sections of the network until the whole network has been checked.



SePem® 150: safety through permanent monitoring

The **SePem® 150** data loggers are designed for the stationary monitoring of water supply networks. They have an external aerial and are permanently fixed to fittings. The **SePem® 150s** record the minimum level every night for a programmable period of time, for example half an hour. The locations are periodically patrolled, for instance daily or weekly, when the noise loggers send their data telegrams to the **SePem® 01 Master**. Unlike the mobile application, there is no comparison of the absolute levels of two measuring points, but rather a relative change in the level at a measuring point means that a new leak can be very quickly identified.

Sturdy technology you can rely on

- The data loggers feature the high protection class IP68. The housing is made of stainless steel and a special, tried and tested plastic, which is also used, for example, in the housing of pumps used in sewage treatment. This makes the **SePem® 100** and **SePem® 150** totally waterproof and dustproof, resistant to all corrosion and other stresses and suitable for use in all environments.
- With a battery life of many years, the **SePem® 100s** and **SePem® 150s** are operational for a long time and are equipped for any task.



Reliable and efficient

- The **SePem® 100** and **SePem® 150** data loggers feature highly sensitive Piezo microphones, which are specially optimised for leak detection and can pick up noises over very large distances.
- The data can be read out easily by bidirectional radio. In the case of the permanently installed **SePem® 150** loggers, you do not need to open the covers; simply drive by with the **SePem® 01 Master** to record the data.
- As well as the minimum level, the transmitted telegram contains the width and frequency of the noise and is clearly displayed on the **SePem® 01 Master** screen. There are additional options for verifying the measurement results, for example by precluding sound interference such as rain, traffic, power lines etc.
- During the patrol, a full data set containing the plot of the last measurement can also be retrieved at the touch of a button from every **SePem® 150** logger in addition to the data telegram. Again, it is not necessary to open the manhole cover to obtain all of this data. A brief pause within the radio range of the **SePem® 150** is sufficient.

Convenient to use

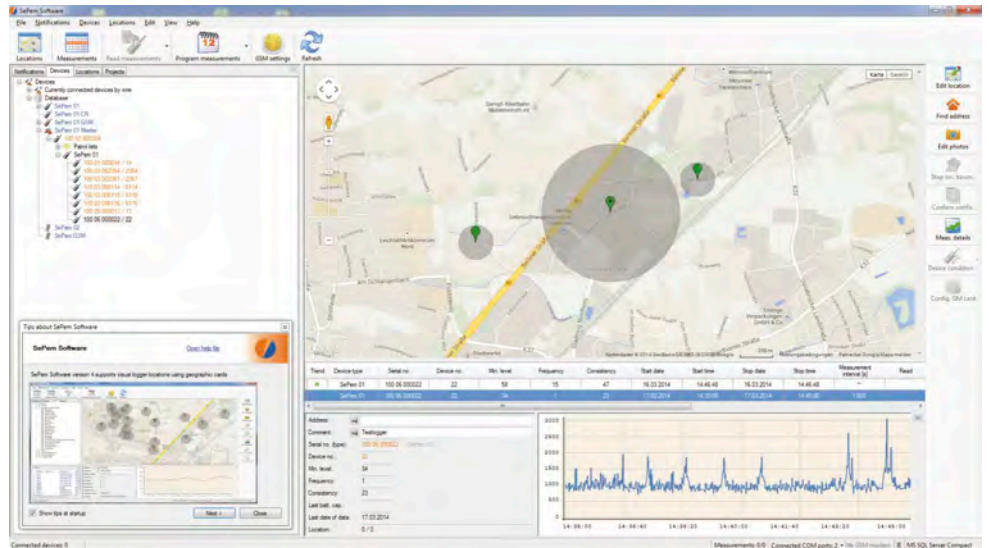
- The online measurement function allows you to take current measurements on site which can be displayed on the **SePem® 01 Master**. For example, this means that you can check the suitability of measuring points during the day at the time of installation before the actual measurement at night or determine appropriate installation intervals. Or you can verify the plausibility of measurement data collected overnight directly on site.
- The measuring times and periods of radio activity are freely programmable.
- The **SePem® 01 Master**, with its simple and intuitive menu navigation, provides fast and reliable results and can also be reliably operated by less experienced users.



SePem® software for easy evaluation

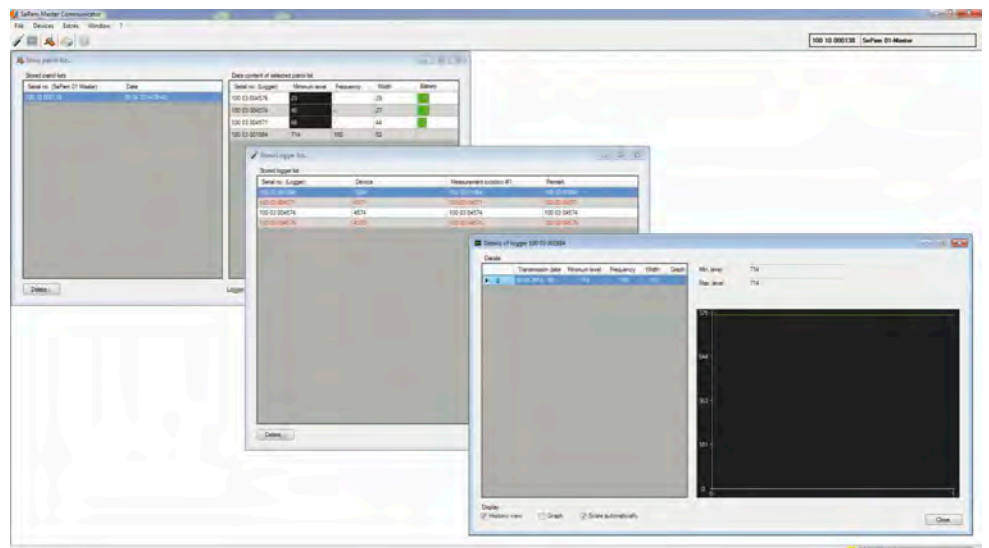
The **SePem® software** is a convenient tool for evaluating data. The data from the **SePem®** noise loggers is transmitted from the **SePem® 01 Master** to PC by USB. The loggers can then be dragged & dropped into position on a map if the PC is connected to the internet. All the measurements recorded are then assigned to this measuring point.

There are many functions available to professionally display the requirements both at mobile and stationary applications. In the absence of an internet connection, the measurement data is displayed in the usual way in a table in the Explorer view.



SePem® Master Communicator for data backup and visualisation

The **SePem® Master Communicator** software is freeware, which allows you to display the data managed on the **SePem® 01 Master** directly on a PC. The patrol lists are transmitted directly after connection and saved in a database. In logger lists you can directly access and easily manage measurements from the individual **SePem®** noise loggers.



Please contact us for a comprehensive quotation, including additional technical specifications and information on accessories.

Services d'EURO-INDEX

EURO-INDEX est un fabricant, importateur et distributeur de diverses marques A dans le domaine des instruments de test et de mesure. Nous fournissons également une large gamme de services pour optimiser l'utilisation de ces instruments dans vos activités. Ces services comprennent naturellement l'entretien, la réparation et l'étalonnage des instruments, mais nous proposons aussi une assistance sous forme de formation via notre EURO-INDEX Academy et la location d'instruments.

Centre de Service Agréé

EURO-INDEX est un Centre de Service Agréé pour toutes les marques représentées. Cela signifie que vos instruments sont pris en charge par des techniciens formés par le fabricant et disposant des outils et logiciels adéquats. Seules des pièces d'origine sont utilisées et la garantie de votre instrument, ainsi que les certifications (ATEX, EN50379, etc.) restent intactes.

Laboratoire de maintenance et de calibrage

Le laboratoire des Pays-Bas est accrédité RvA selon la norme EN-ISO/IEC 17025. Cette accréditation est valable pour différentes grandeurs, telles que spécifiées dans le champ d'application associé au numéro d'accréditation K105. Les certificats de calibrage RvA sont acceptés à l'international et équivalents à ceux de BELAC.



Service Mobile

Outre les laboratoires d'étalonnage fixes de Zaventem et de Capelle aan den IJssel, nous disposons également d'un laboratoire itinérant appelé "Service mobile". Nos services peuvent venir vers vous, en offrant une qualité équivalente.

MQS®

MQS® est une formule d'entretien exclusive comportant un entretien et un calibrage périodiques de vos instruments de mesure à un coût fixe et faible. Via un portail Web gratuit (monmq.be), vous avez toujours accès à vos certificats de calibrage.

Location d'instruments de mesure

- Vaste assortiment
- Précision démontrable par le certificat d'étalonnage actuel
- Conseils avisés
- Les instruments sont livrés avec leurs accessoires

EURO-INDEX Academy

- Formations et séminaires
- Vidéos de démonstration et d'instruction
- Notes d'application



Comptoir de service



Entretien, réparation et calibrage



Formations et séminaires



Service Mobile

Sous réserve de modifications EURO-INDEX® FR 23001



BELGIQUE
Chaussée de Louvain 607
1930 Zaventem
T: 02 - 757 92 44
F: 02 - 757 92 64
sales@euro-index.be
www.euro-index.be

PAYS-BAS
Rivium 2e straat 12
2909 LG Capelle a/d IJssel
T: +31 - (0)10 - 2 888 000
F: +31 - (0)10 - 2 888 010
verkoop@euro-index.nl
www.euro-index.nl

