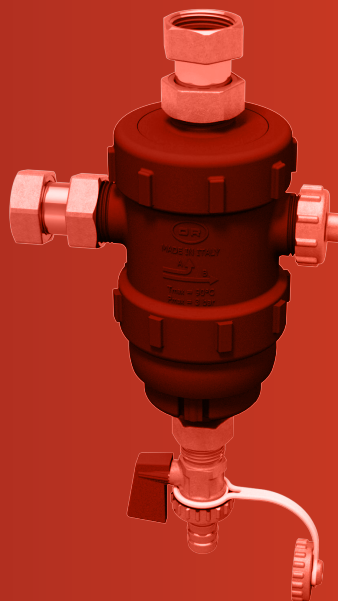


UNDER-BOILER MAGNETIC DIRT SEPARATOR VORTEX

CONNECTIONS: FEMALE SWIVEL NUTS



DESCRIPTION

The under-boiler magnetic dirt separator VORTEX allows for the removal of dirt and debris from the heat transfer fluid circulating within the heating systems. Dirt and debris accumulating inside the system are partly released by calcareous deposits of the heat transfer fluid and partly generated from corrosive phenomena involving the surface of the components of the system. Besides that, the impurities introduced into the system during the start-up phase should also be considered. The debris dissolved in the heat transfer fluid are deposited inside the main parts of the system, such as radiators, thermostatic valves, heat exchangers of the boiler, etc., by obstructing the internal passages and causing noise, inefficiency and malfunctioning. In case the debris belong to the ferrous type, localized corrosive phenomena might appear. The magnetic dirt separator VORTEX protects and keeps all the components of the system at full efficiency, by separating the impurities by means of cyclonic technology: the heat transfer fluid is rotated at high speed within a properly shaped inner chamber, in order to let all the debris flow inside the collection storage of the dirt separator. The head loss of the dirt separator doesn't change over time, since the quantity of the accumulated particles doesn't affect the performance of the device. Two powerful neodymium magnets serve to retain the small sized ferrous particles. The collection storage can be drained without having to dismantle the dirt remover and without the use of tools. You only need to slide downwards the ring containing the magnets and open the drain cock. The valve is provided with a practical hose fitting. The under-boiler magnetic dirt separator VORTEX can be installed either in a straight configuration or in angle configuration, ensuring the same filtering capacity.

TECHNICAL FEATURES

Pressure:	
maximum allowable working pressure PN	3 bar
Temperature:	
allowable working temperature	0 ÷ 90°C
Flow coefficient Kv:	
angle configuration	3,8 m ³ /h
straight configuration	3,5 m ³ /h
Compatible fluids:	
water	
glycolate solutions	max glycol 50%
Threadings:	
swivel nut female	G3/4" ISO228/1
hose fitting	Ø15 mm

DESIGN

Body and threaded locking nut	PA66 GF30
Internal organs	POM
Magnets	2 neodymium magnets N35M
O-ring	EPDM perox
Plane gaskets	EPDM
Dismantling fittings	brass EN12164-CW614N
Swivel nuts	brass EN12165-CW617N
Drain cock body	brass EN12165-CW617N
Ball	chrome plated brass EN12164-CW614N
Security plug	brass EN12165-CW617N
Hose fitting	brass EN12164-CW614N

PRODUCTS CODE

0285.020 3/4"

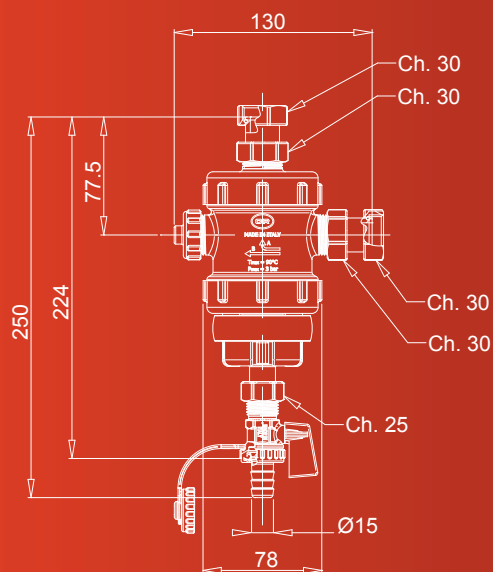
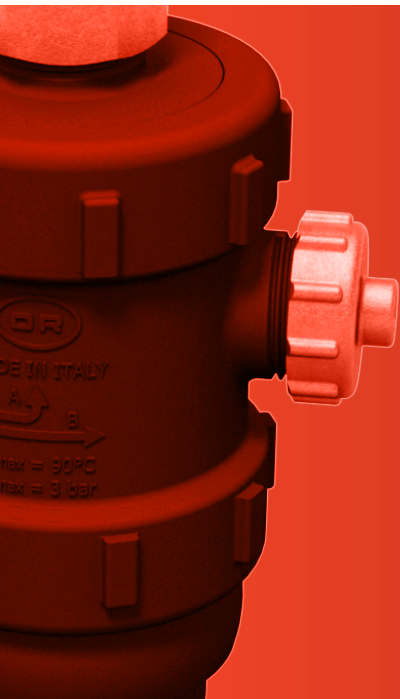


OFFICINE RIGAMONTI S.p.A.
via Circonvallazione, 9
13018 Valduggia (VC), ITALY
TEL. +39 0163.48165
FAX +39 0163.47254
www.officinerigamonti.it
export@officinerigamonti.it

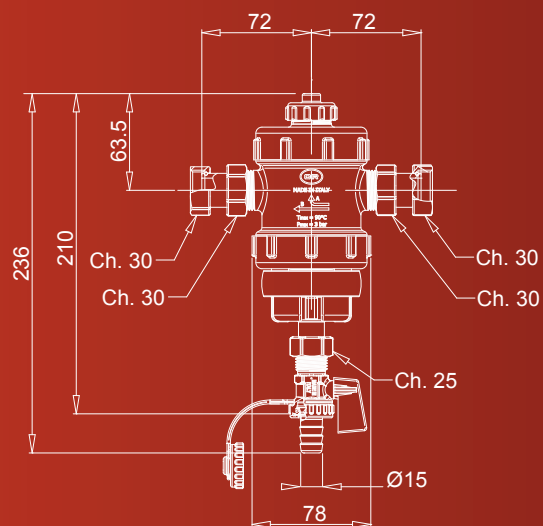
0285 • 3/4"

UNDER-BOILER MAGNETIC DIRT SEPARATOR **VORTEX**

CONNECTIONS: FEMALE SWIVEL NUTS



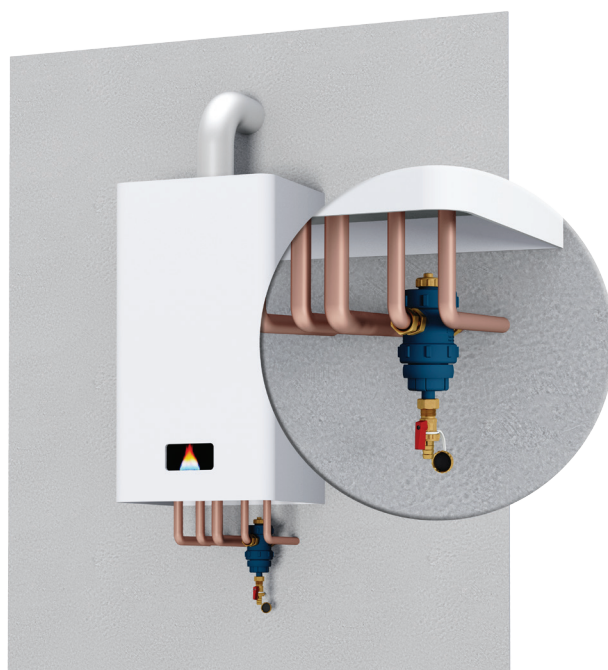
ANGLE CONFIGURATION



STRAIGHT CONFIGURATION



ANGLE INSTALLATION



STRAIGHT INSTALLATION