

JOIN THE SPARTAN REVOLUTION AND MOVE WITH US INTO THE FUTURE OF A/C DIAGNOSTICS AND SERVICE



4.3" Color LCD provides easy to read diagnostic information



Responsive Touchscreen enables navigation with a quick tap of the finger



Bluetooth® Wireless Technology allows information to be viewed on compatible hand-held smart devices via the Mastercool Connect app

FEATURES:

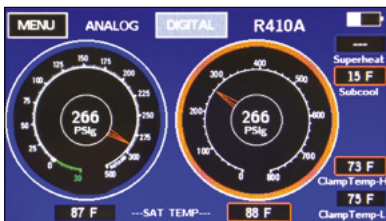
- CLASS 1.0 GAUGE provides accurate, high quality readings
- 4.3" COLOR TOUCHSCREEN to navigate with a touch of the finger
- PREMIUM BUILT-IN VACUUM SENSOR with a resolution down to 1 micron
- DISPLAYS PRESSURE, VACUUM, TEMPERATURE and will automatically calculate superheat and subcool temperatures
- OVER 60 pre-programmed refrigerants included (see www.mastercool.com for complete list)
- BLUETOOTH® WIRELESS TECHNOLOGY provides communication with the Mastercool Connect app to allow for full mobility as activity can be easily viewed on all compatible hand-held devices
- LOW BATTERY INDICATOR on the LCD shows when battery needs charging
- RECORD AND STORE UP TO 36 HOURS OF DATA to the manifold memory
- OPTIONAL PREMIUM TEMPERATURE CLAMP with K-type connector
- AUTO-OFF AFTER 30 MINUTES of inactivity helps to conserve battery life
- PRESSURE LEAK TEST FUNCTION displays delta for both vacuum and positive pressure measurements
- EASILY SWITCH BETWEEN DIGITAL AND ANALOG depictions of pressure and temperature
- SIMPLE CALIBRATION for ultimate utility

SPECIFICATIONS:

- Gauge: class 1.0
- Pressure display: psi, bar, MPa, kg/cm²
- Temperature display: °F or °C
- Deep vacuum display: micron, mBar, kPa, Pa, Torr, mTorr, mmHg
- Sensing resolution: 1 psi (.07 bar, .007 MPa, .07 kg/cm²)
- Sensing accuracy: ±1 psi or 1% of reading (whichever is greater)
- Working pressure: 0 to 725 psi (50 bar, 5 MPa, 52 kg/cm²)
- Proof pressure: 1000 psi (70 bar, 7 MPa, 70 kg/cm²) (tolerable pressure without internal damage)
- Refrigerant temperature range: -40 to 200°F (-40 to 93°C)
- Operating temperature: 32 to 122°F (0 to 45°C)
- Temperature accuracy: ±1°F (±0.5°C) between 32 to 160°F (0 to 71°C)
- Storage temperature: 10 to 120°F (-12 to 49°C) (non-condensing)
- Vacuum sensor: range 20,000 to 1 micron
- Connections: 1/4" m-flare and 3/8" m-fl (vacuum hose connection (4 way only))
- Power: lithium-ion rechargeable battery (USB type C connector supplied)
- Battery life: 30-36 hours normal use (25-30 hours with bluetooth enabled)
- Auto-off: after 30 minutes, sleep mode 4 minutes

Specifications for Bluetooth® Wireless Technology:

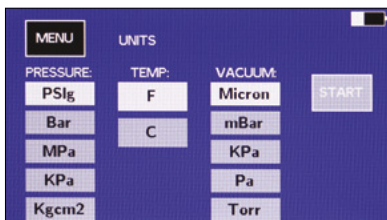
- 260' (80m) maximum line-of-sight range
- Bluetooth® 4.2 and 5



Analog Dashboard



Digital Dashboard



Units Dashboard



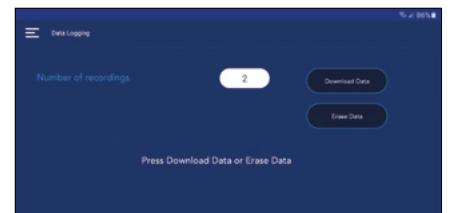
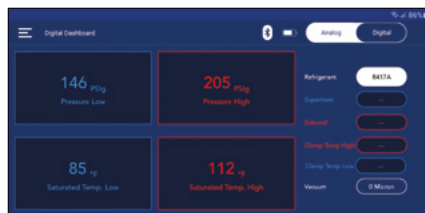
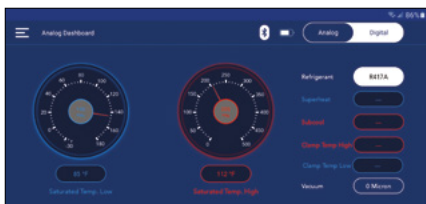
MASTERCOOL CONNECT APP

Simply download the free Mastercool Connect app to begin receiving and analyzing data from any nearby Mastercool Spartan Smart Manifold.



Use the Spartan Smart Manifold and the Mastercool Connect App to:

- Provide all of the manifold's data remotely. Sit back in a comfortable location and watch the system's performance.
- Leak test for both pressure and vacuum. Check on the test's progress while performing other tasks away from the unit.
- Datalog the system's performance for up to 36 hours. Save all of the values of the system's performance throughout the day and overnight without having to manually record them. The app gives you a way to download the information from the manifold and forward the file to your favorite spreadsheet program for analysis.



Apple® and the Apple Logo® are trademarks of Apple Inc. Google Play and the Google Play logo are trademarks of Google LLC. The Bluetooth® word mark and logos are registered trademarks owned by Bluetooth SIG, Inc. and any use of such marks by Mastercool Inc. is under license. Other trademarks and trade names are those of their respective owners.



SPARTAN SMART MANIFOLD with Bluetooth® Wireless Technology

Mastercool's SPARTAN series smart manifold with Bluetooth® wireless technology is equipped with a 4.3" color touchscreen LCD, allowing the user to navigate through all of the screens and options with a quick tap of their finger. Now with a built-in premium vacuum sensor and an accuracy down to 1 micron, there is no need for additional equipment to properly diagnose and service your A/C system.

SPARTAN 2 WAY SMART MANIFOLD



99923-BT-2

	HOSES	TEMPERATURE CLAMP	BLACK VACUUM HOSE	USB TYPE C CONNECTOR	STRAIGHT ADAPTER FITTING (90413)
99923-BT*	-	-	-	1	-
99923-BT-2*	-	2	-	1	-
High Pressure Hoses with Standard Fittings					
99926-BT**	60"	1	-	1	-
99926-BT-2**	60"	2	-	1	-
99927-BT**	72"	1	-	1	-
99927-BT-2**	72"	2	-	1	-
99926-BT-EU**		1	-	1	2
99927-BT-EU**	72"	1	-	1	2

High Pressure Hoses with Ball Valves At The End

99926-BT-2BVE**	60"	2	-	1	2
-----------------	-----	---	---	---	---

SPARTAN 4 WAY SMART MANIFOLD



99926-BT-2

99943-BT*	-	-	-	1	-
99943-BT-2*	-	2	-	1	-
High Pressure Hoses with Standard Fittings					
99946-BT**	60"	1	1	1	-
99946-BT-2**	60"	2	1	1	-
99947-BT**	72"	1	1	1	-
99947-BT-2**	72"	2	1	1	-
99946-BT-EU**	60"	1	1	1	2
99947-BT-EU**	72"	1	1	1	2

High Pressure Hoses with Ball Valves At The End

99946-BT-2BVE**	60"	2	1	1	2
-----------------	-----	---	---	---	---

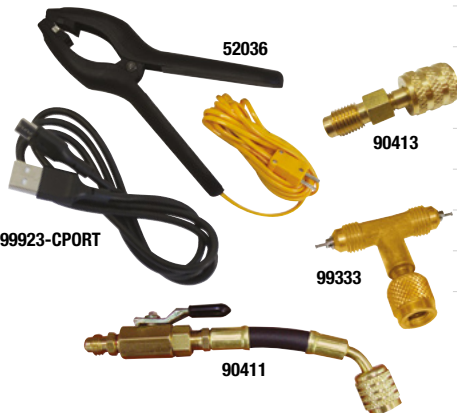
* packaged in a cardboard box / ** packaged in a blow molded plastic case

OPTIONAL ACCESSORIES

52036	Ergonomic Clamp-on K Type Probe – 3 ft (1 m)
52108	Ergonomic Clamp-on K Type Probe – 10 ft (3 m)
99923-CPORT	USB Type C Cable
90413	R410A Straight Adapter 1/4" FL-M x 5/16" Swivel-F
99332	1/8" NPT x 1/4" -FL Swivel Adapter
90411	1/4" x 5/16" Flex Adapter with Ball Valve
99333	1/4" FL-M x 1/4" FL-M x 1/4" FL-F Tee
99923-PB	Plastic Molded Case



99946-BT-2



Service van EURO-INDEX

EURO-INDEX verleent service op alle meetinstrumenten uit haar leveringspakket en biedt de faciliteiten, kennis en hoog gekwalificeerd personeel voor (preventief) onderhoud, reparatie en kalibratie van uw meetinstrumenten.

Geautoriseerd Service Centrum

EURO-INDEX is van alle vertegenwoordigde merken een Geautoriseerd Service Centrum.

Dit betekent dat uw instrumenten worden behandeld door goed opgeleid en kundig personeel, dat beschikt over de juiste gereedschappen en software. Er worden uitsluitend originele onderdelen gebruikt en de garantie van uw instrument, evenals de certificering (ATEX, EN50379, etc.) blijven intact.

Service- en kalibratielaboratorium

EURO-INDEX beschikt over een bijzonder modern service- en kalibratielaboratorium met RvA accreditatie naar NEN-EN-ISO/IEC 17025. Deze accreditatie geldt voor verschillende grootheden, zoals gespecificeerd in de scope bij accreditatienummer K105.



KWS®

KWS is een uniek servicesysteem voor uw meetinstrumenten met periodiek onderhoud en kalibratie. Veel zaken worden voor u geregeld, zodat u zonder zorgen gebruik kunt maken van uw meetinstrumenten. De kosten zijn laag en voorspelbaar.

Digitale toegang tot uw kalibratiecertificaten met Mijn KWS

Via het Mijn KWS webportal heeft u altijd en overal toegang tot uw kalibratiecertificaten en gerelateerde documenten.

Verhuur van meetinstrumenten

- Uitgebreid assortiment
- Deskundig advies
- Instrumenten worden geleverd met accessoirepakket en herleidbaar kalibratiecertificaat

EURO-INDEX Academy

- Producttrainingen (individueel en klassikaal)
- Seminars
- Demonstratie- en instructievideo's

Bekijk de video op ons YouTube kanaal en ontdek alles over KWS



Servicebalie



Kalibratie rookgasanalyse



Seminars en workshops



Kalibratie thermografie

Wijzigingen voorbehouden EURO-INDEX® VL 18001

Het Bluetooth® woord- en beeldmerk zijn eigendom van Bluetooth SIG, Inc. Gebruik van deze merken door EURO-INDEX geschiedt onder licentie.



BELGIË
Leuvensesteenweg 607
1930 Zaventem
T: 02 - 757 92 44
F: 02 - 757 92 64
info@euro-index.be
www.euro-index.be

NEDERLAND
Rivium 2e straat 12
2909 LG Capelle a/d IJssel
T: +31 - (0)10 - 2 888 000
F: +31 - (0)10 - 2 888 010
verkoop@euro-index.nl
www.euro-index.nl

