

JOIN THE SPARTAN REVOLUTION AND MOVE WITH US INTO THE FUTURE OF A/C DIAGNOSTICS AND SERVICE



4.3" Color LCD provides easy to read diagnostic information



Responsive Touchscreen enables navigation with a quick tap of the finger



Bluetooth® Wireless Technology allows information to be viewed on compatible hand-held smart devices via the Mastercool Connect app

FEATURES:

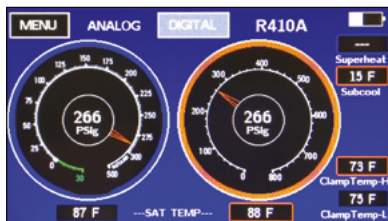
- CLASS 1.0 GAUGE provides accurate, high quality readings
- 4.3" COLOR TOUCHSCREEN to navigate with a touch of the finger
- PREMIUM BUILT-IN VACUUM SENSOR with a resolution down to 1 micron
- DISPLAYS PRESSURE, VACUUM, TEMPERATURE and will automatically calculate superheat and subcool temperatures
- OVER 60 pre-programmed refrigerants included (see www.mastercool.com for complete list)
- BLUETOOTH® WIRELESS TECHNOLOGY provides communication with the Mastercool Connect app to allow for full mobility as activity can be easily viewed on all compatible hand-held devices
- LOW BATTERY INDICATOR on the LCD shows when battery needs charging
- RECORD AND STORE UP TO 36 HOURS OF DATA to the manifold memory
- OPTIONAL PREMIUM TEMPERATURE CLAMP with K-type connector
- AUTO-OFF AFTER 30 MINUTES of inactivity helps to conserve battery life
- PRESSURE LEAK TEST FUNCTION displays delta for both vacuum and positive pressure measurements
- EASILY SWITCH BETWEEN DIGITAL AND ANALOG depictions of pressure and temperature
- SIMPLE CALIBRATION for ultimate utility

SPECIFICATIONS:

- Gauge: class 1.0
- Pressure display: psi, bar, MPa, kg/cm²
- Temperature display: °F or °C
- Deep vacuum display: micron, mBar, kPa, Pa, Torr, mTorr, mmHg
- Sensing resolution: 1 psi (.07 bar, .007 MPa, .07 kg/cm²)
- Sensing accuracy: ±1 psi or 1% of reading (whichever is greater)
- Working pressure: 0 to 725 psi (50 bar, 5 MPa, 52 kg/cm²)
- Proof pressure: 1000 psi (70 bar, 7 MPa, 70 kg/cm²) (tolerable pressure without internal damage)
- Refrigerant temperature range: -40 to 200°F (-40 to 93°C)
- Operating temperature: 32 to 122°F (0 to 45°C)
- Temperature accuracy: ±1°F (±0.5°C) between 32 to 160°F (0 to 71°C)
- Storage temperature: 10 to 120°F (-12 to 49°C) (non-condensing)
- Vacuum sensor: range 20,000 to 1 micron
- Connections: 1/4" m-flare and 3/8" m-fl (vacuum hose connection (4 way only))
- Power: lithium-ion rechargeable battery (USB type C connector supplied)
- Battery life: 30-36 hours normal use (25-30 hours with bluetooth enabled)
- Auto-off: after 30 minutes, sleep mode 4 minutes

Specifications for Bluetooth® Wireless Technology:

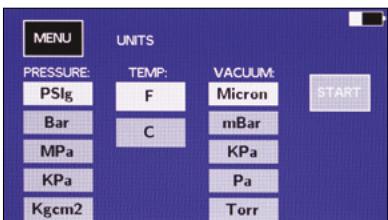
- 260' (80m) maximum line-of-sight range
- Bluetooth® 4.2 and 5



Analog Dashboard



Digital Dashboard



Units Dashboard



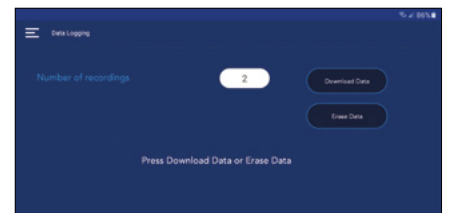
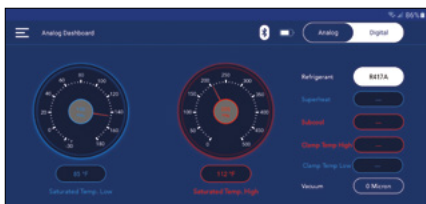
MASTERCool CONNECT APP

Simply download the free Mastercool Connect app to begin receiving and analyzing data from any nearby Mastercool Spartan Smart Manifold.



Use the Spartan Smart Manifold and the Mastercool Connect App to:

- Provide all of the manifold's data remotely. Sit back in a comfortable location and watch the system's performance.
- Leak test for both pressure and vacuum. Check on the test's progress while performing other tasks away from the unit.
- Datalog the system's performance for up to 36 hours. Save all of the values of the system's performance throughout the day and overnight without having to manually record them. The app gives you a way to download the information from the manifold and forward the file to your favorite spreadsheet program for analysis.



Apple® and the Apple Logo® are trademarks of Apple Inc. Google Play and the Google Play logo are trademarks of Google LLC. The Bluetooth® word mark and logos are registered trademarks owned by Bluetooth SIG, Inc. and any use of such marks by Mastercool Inc. is under license. Other trademarks and trade names are those of their respective owners.



SPARTAN SMART MANIFOLD with Bluetooth® Wireless Technology

Mastercool's SPARTAN series smart manifold with Bluetooth® wireless technology is equipped with a 4.3" color touchscreen LCD, allowing the user to navigate through all of the screens and options with a quick tap of their finger. Now with a built-in premium vacuum sensor and an accuracy down to 1 micron, there is no need for additional equipment to properly diagnose and service your A/C system.

SPARTAN 2 WAY SMART MANIFOLD



99923-BT-2

	HOSES	TEMPERATURE CLAMP	BLACK VACUUM HOSE	USB TYPE C CONNECTOR	STRAIGHT ADAPTER FITTING (90413)
99923-BT*	-	-	-	1	-
99923-BT-2*	-	2	-	1	-
High Pressure Hoses with Standard Fittings					
99926-BT**	60"	1	-	1	-
99926-BT-2**	60"	2	-	1	-
99927-BT**	72"	1	-	1	-
99927-BT-2**	72"	2	-	1	-
99926-BT-EU**		1	-	1	2
99927-BT-EU**	72"	1	-	1	2

High Pressure Hoses with Ball Valves At The End

99926-BT-2BVE**	60"	2	-	1	2
-----------------	-----	---	---	---	---

SPARTAN 4 WAY SMART MANIFOLD



99926-BT-2

99943-BT*	-	-	-	1	-
99943-BT-2*	-	2	-	1	-
High Pressure Hoses with Standard Fittings					
99946-BT**	60"	1	1	1	-
99946-BT-2**	60"	2	1	1	-
99947-BT**	72"	1	1	1	-
99947-BT-2**	72"	2	1	1	-
99946-BT-EU**	60"	1	1	1	2
99947-BT-EU**	72"	1	1	1	2

High Pressure Hoses with Ball Valves At The End

99946-BT-2BVE**	60"	2	1	1	2
-----------------	-----	---	---	---	---

* packaged in a cardboard box / ** packaged in a blow molded plastic case

OPTIONAL ACCESSORIES

52036	Ergonomic Clamp-on K Type Probe – 3 ft (1 m)
52108	Ergonomic Clamp-on K Type Probe – 10 ft (3 m)
99923-CPORT	USB Type C Cable
90413	R410A Straight Adapter 1/4" FL-M x 5/16" Swivel-F
99332	1/8" NPT x 1/4" -FL Swivel Adapter
90411	1/4" x 5/16" Flex Adapter with Ball Valve
99333	1/4" FL-M x 1/4" FL-M x 1/4" FL-F Tee
99923-PB	Plastic Molded Case



99946-BT-2



Les services d'EURO-INDEX

EURO-INDEX fournit des services pour tous les instruments de sa gamme de fournitures et offre des services, de la connaissance et du personnel hautement qualifié pour l'entretien (préventif), la réparation et le calibrage de vos instruments de mesure.

Centre de Service Agréé.....

EURO-INDEX est un Centre de Service Agréé pour toutes les marques représentées.

Autrement dit, vos instruments sont traités par du personnel formé et compétent, qui dispose des outils et logiciels adéquats. Seules des pièces d'origine sont utilisées et la garantie de votre instrument ainsi que la certification (ATEX, EN50379, etc.) restent valables.

Laboratoire de maintenance et de calibrage.....

EURO-INDEX dispose d'un laboratoire de maintenance et de calibrage particulièrement moderne, titulaire d'une accréditation conforme à la norme NEN-EN-ISO/IEC 17025. Cette accréditation est valable pour différentes grandeurs, telles que spécifiées dans le champ d'application associé au numéro d'accréditation K105.



MQS®

MQS est une formule d'entretien exclusive comportant un entretien et un calibrage périodiques de vos instruments de mesure. La prise en charge de multiples aspects vise à vous libérer de tout souci lors de l'utilisation de vos instruments de mesure. Les coûts sont modiques et prévisibles.

Accès numérique à vos certificats de calibrage avec Mon MQS

Mon MQS est un portail Web qui vous donne accès partout et à tout moment à vos certificats de calibrage et aux documents apparentés.

Location d'instruments de mesure

- Vaste assortiment
- Conseils avisés
- Les instruments sont livrés avec leurs accessoires et leurs certificats de calibrage traçables

EURO-INDEX Academy

- Formations sur les produits (individuelles et collectives)
- Séminaires
- Vidéos de démonstration et d'instruction

Visionnez la vidéo sur notre chaîne YouTube et découvrez tout ce qu'il vous faut savoir sur MQS



Guichet des services



Calibrage de l'analyse de gaz de combustion



Séminaires et ateliers



Calibrage de la thermographie

Sous réserve de modifications EURO-INDEX® FR 18001

Le nom et la marque Bluetooth® sont la propriété de Bluetooth SIG Inc. L'utilisation de ce nom par EURO-INDEX s'effectue sous licence.



BELGIQUE
Leuvensesteenweg 607
1930 Zaventem
T: 02 - 757 92 44
F: 02 - 757 92 64
info@euro-index.be
www.euro-index.be

PAYS-BAS
Rivium 2e straat 12
2909 LG Capelle a/d IJssel
T: +31 - (0)10 - 2 888 000
F: +31 - (0)10 - 2 888 010
verkoop@euro-index.nl
www.euro-index.nl

