

**NEW**

 Quality and reliability is our tradition  
**KYORITSU**

# MULTIFUNCTION INSTALLATION TESTERS

## KEW 6516/6516BT

*A lot of Testing Power in the hands of Electrical Installation Professionals!*



**Insulation**  
100/250/500/1000V

**Loop**  
2/20/200/2000Ω

**RCD**  
10/30/100/300/500/1000mA

**PSC**  
2000A/20kA

**PFC**  
2000A/20kA 2000A/50kA

**Earth**  
20/200/2000Ω

**ACV**  
300V/600V

**Continuity**  
20/200/2000Ω

**Phase rotation**

**Frequency**

**SPD (Varistor)**

**PAT**

### Communication interface

USB



KEW Report

Bluetooth®



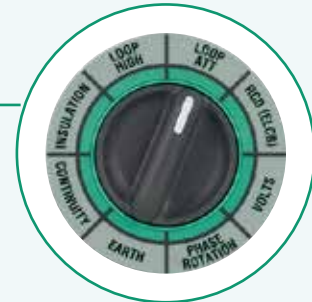
 KEW Smart\*

KYORITSU ELECTRICAL INSTRUMENTS WORKS, LTD.

[www.kew-ltd.co.jp](http://www.kew-ltd.co.jp)

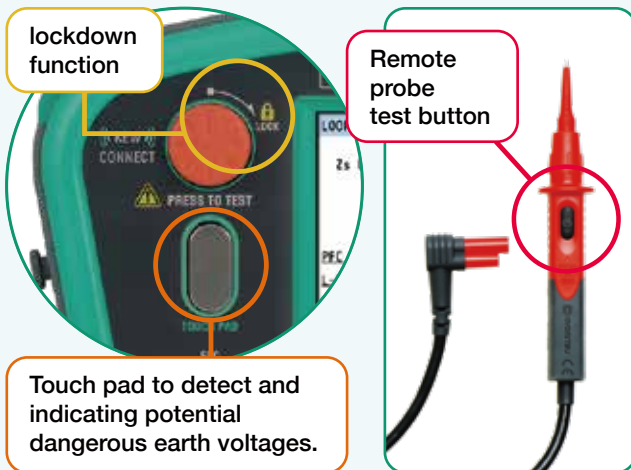
## Operation in 3 simple steps

- ✔ Set the rotary dial to your testing range.
- ✔ Connect the instrument to the installation under test.
- ✔ Press the test button.



## Hands free testing

By remote probe or using the Lockdown function of the test button.



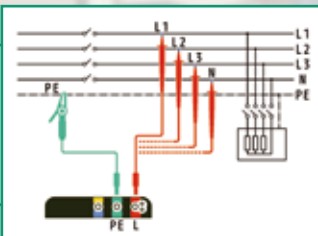
## Large LCD

All the test data is shown in one large colored screen.



## Anti-Trip Technology (with 2 & 3 wire)

For no trip LOOP L-PE testing on all RCDs.  
 With 3 wire (L, N, PE), to get the best accuracy readings.  
 With 2 wire only, very useful in case of no Neutral (i.e. 3-phase motor lines).



## HELP Key

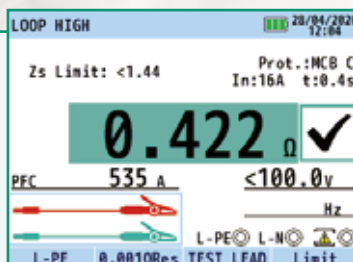
HELP function will show how to connect the instrument according to the function selected.



Loop test from a wall socket

## 0.001 resolution

Thanks to high test current of 25A, the Loop Impedance Phase to Earth is measured with high resolution of 0.001 ohm. This can be useful when testing in the main switchboard closer to the transformer.

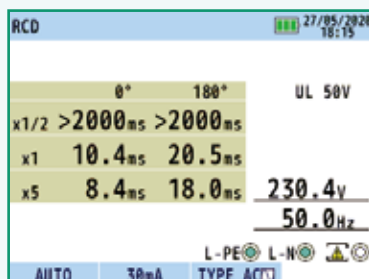
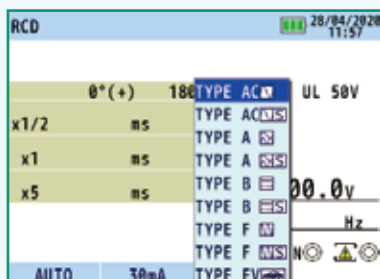


Continuity check of equipotential bonding

# Testing Power in the hands of Electrical Installation Professionals!

## Wide variety of RCDs can be tested

Type AC, A, F, B (General & Selective) EV and Variable RCDs. Single and Auto test, Ramp test and Contact voltage.



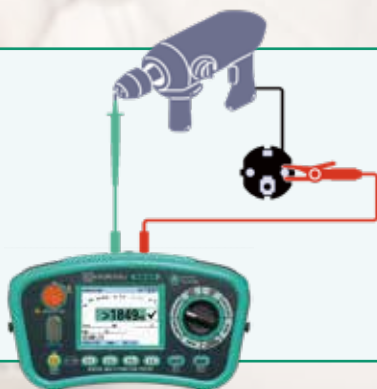
## SPD test

SPD (Surge Protection Device) which contains varistor can be tested measuring the tripping voltage without damage it.

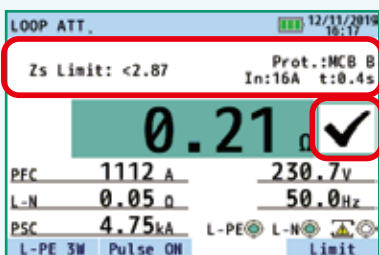


## PAT test

PAT test (PAT = Portable Appliance Tester) It is possible to check the insulation resistance and earth bond continuity of portable appliances for class I and II.



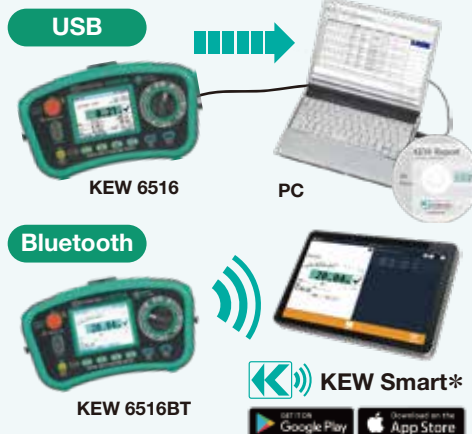
## Zs/Ra Limit



The verification of safety requirement on an electrical installation is simplified by using Zs/Ra Limit function. This function will automatically check if the measured loop impedance for TN (or earth loop for TT) is low enough to trip (disconnect) the MCB / Fuse / RCD giving the result of PASS(✓) or FAIL (x) on the KEW 6516 display.

## Connectivity

KEW 6516 can download the test data by connecting the USB adaptor (Model 8212-USB) and then print complete Test Reports by a PC. While KEW 6516BT can transfer the test data to a Tablet or Smartphone via Bluetooth. Such test data can be saved, shared and sent by email. The USB adaptor can also be ordered as an option.



## Included accessories



**KEW 6516 and KEW 6516BT come complete with everything you need for testing an electrical installation**

## Optional Accessories



# KEW 6516/6516BT Specifications

Insulation resistance					SPD(Varistor)		
Test voltage	100V	250V	500V	1000V	Max.1000V		
Measuring ranges	2.000/20.00/200.0MΩ (Auto-ranging)		20.00/200.0/1000MΩ (Auto-ranging)	20.00/200.0/2000MΩ (Auto-ranging)	0-1000V(goes up by 1V)		
Accuracy	±2%rdg±6dgt (2.000/20.00MΩ) ±5%rdg±6dgt (200.0MΩ)		±2%rdg±6dgt (20.00/200.0MΩ) ±5%rdg±6dgt (1000MΩ)	±2%rdg±6dgt (20.00/200.0MΩ) ±5%rdg±6dgt (2000MΩ)	±5%rdg±5dgt		
Rated current	1.0-1.2mA @0.1MΩ	1.0-1.2mA @0.25MΩ	1.0-1.2mA @0.5MΩ	1.0-1.2mA @1MΩ	-		
Short circuit current	1.5mA max				-		
Loop impedance							
Function	LOOP ATT L-PE/L-N(3wire)		LOOP HIGH L-PE(0.01ΩRes)				
Rated voltage	100-260V(50/60Hz)	48-260V(50/60Hz)	48-260V(50/60Hz)	100-260V(50/60Hz)	48-500V(50/60Hz)		
Impedance range	20.00/200.0/2000Ω (Auto-ranging)		20.00/200.0/2000Ω (Auto-ranging)	2.000Ω	20.00Ω		
Accuracy	±3%rdg±6dgt		±3%rdg±10dgt	±3%rdg±25mΩ	±3%rdg±4dgt		
Nominal test current at 0Ω external loop: Magnitude/Duration at 230V	L-N:6A/60ms N-PE:10mA	L-PE:15mA	20Ω:6A/20ms 200Ω:0.5A/20ms 2000Ω:15mA/500ms	25A/20ms	6A/20ms		
PSC/PFC							
Range	2000A/20kA(L-N(PSC)/L-PE(PFC))		2000A/20kA(PFC)	2000A/20kA(PFC)	2000A/50kA(PFC)		
Accuracy	PSC/PFC accuracy is derived from measured loop impedance specification and measured voltage specification						
RCD							
Rated voltage	100-260V(50/60Hz)						
Function	x1/2, x1, x5, Ramp, Auto, Uc						
	6/10/30/100/300/500/1000mA/variable						
RCD type	AC(G/S)	A(G/S)	F(G/S)	B(G/S)	EV		
Trip current setting	x1/2, x1, Uc	10/30/100/300/500/1000mA(G) 10/30/100/300/500mA(S)	10/30/100/300/500mA	10/30/100/300/500mA	10/30/100/300mA		
	x5	10/30/100mA	10/30/100mA	10/30/100mA	10/30mA		
	Ramp	10/30/100/300/500mA	10/30/100/300/500mA	10/30/100/300/500mA	10/30/100/300mA	6mA	
Accuracy	Trip current	x1/2	-8% - -2%	-10% - 0%	-10% - 0%	-	
		x1	+2% - +8%	0% - +10%	0% - +10%	0% - +10%	
		x5	+2% - +8%	0% - +10%	0% - +10%	0% - +10%	-
	Trip time	Ramp	-4% - +4%	-10% - +10%	-10% - +10%	-10% - +10%	-10% - +10%
		x1/2	2000ms(G/S):±1%rdg±2ms		-	-	
		x1	550ms(G):±1%rdg±2ms, 1000ms(S):±1%rdg±2ms		-	10.5s:±1%±2ms	
x5	410ms(G/S):±1%rdg±2ms		-	-			
Continuity			Volts				
Range	20.00/200.0/2000Ω (Auto-ranging)		Range	300.0/600V(Auto-ranging)			
Open circuit voltage (DC)	7-14V		Measuring ranges	Volts 2-600V			
Measuring current	200mA	>200mA or more(2Ω or less)	Frequency	45-65Hz			
	15mA	15mA±3mA(short-circuit)	Accuracy	Volts	±2%rdg±4dgt		
Accuracy	±2%rdg±8dgt		Frequency	±0.5%rdg±2dgt			
Phase Rotation			Earth				
Rated voltage	48-600V(50/60Hz)		Range	20.00/200.0/2000Ω(Auto-ranging)			
Remarks	Remarks Correct phase sequence: are displayed "1.2.3" and mark Reversed phase sequence: are displayed "3.2.1" and mark		Accuracy	±2%rdg±0.08Ω(20.00Ω) ±2%rdg±3dgt(200.0/2000Ω)			
General							
Applicable Standards	IEC 61010-1 CAT IV 300V, CAT III 600V Pollution degree 2, IEC 61010-2-034, IEC 61557-1, 2, 3, 4, 5, 6, 7, 10, IEC 60529(IP40), IEC 61326(EMC)						
Communication Interface	USB, Bluetooth® 5.0 LE(Bluetooth® Low Energy)*1, Android™ 5.0 or more, iOS 10.0 or more						
Power source	LR6(AA)(1.5V) × 8						
Dimensions	136(L) × 235(W) × 114(D)mm						
Weight	1300g (including batteries.)						
Included Accessories	Main test lead*2, 7281(Test leads with remote control switch), 7246(Distribution board test lead), 7228A(Earth resistance test leads), 8041(Auxiliary earth spikes(2 spikes/1 set)) 9084(Soft case), 9142(Carrying case), 9151(Shoulder strap), 9199(Shoulder pad), LR6(AA) × 8, Instruction manual, 8212-USB(USB adaptor with "KEW Report(Software)")*3, Calibration certificate						
Optional Accessories	8212-USB(USB adaptor with "KEW Report(Software)")*3, 8259(Adapter for measurement terminal), 7272(Precision measurement Cord set), 8017A(Extension prod long)						

\*1 6516BT only


\*2 7187A:British plug, 7218A:(EU)European SHUKO plug, 7221A(SA) South african plug, 7222A:(AU)Australian plug

\*3 8212-USB : Standard accessory for 6516, optional accessory for 6516BT

Bluetooth is a trademark or registered trademark of Bluetooth SIG. Inc.

Android is a trademark or registered trademark of Google Inc.

iOS is a trademark or registered trademark of Cisco Technology, Inc. in the United States and other countries.

 **Safety Warnings :** Please read the "Safety Warnings" in the instruction manual supplied with the instrument thoroughly and completely for correct use. Failure to follow the safety rules can cause fire, trouble, electrical shock, etc. Therefore, make sure to operate the instrument on a correct power supply and voltage rating marked on each instrument.

■ For inquires or orders :

 **KYORITSU ELECTRICAL INSTRUMENTS WORKS, LTD.**

2-5-20, Nakane, Meguro-ku, Tokyo, 152-0031 Japan

Phone:+81-3-3723-0131

Fax:+81-3-3723-0152

E-mail:info-eng@kew-ltd.co.jp

www.kew-ltd.co.jp



# Service van EURO-INDEX

EURO-INDEX verleent service op alle meetinstrumenten uit haar leveringspakket en biedt de faciliteiten, kennis en hoog gekwalificeerd personeel voor (preventief) onderhoud, reparatie en kalibratie van uw meetinstrumenten.

## Geautoriseerd Service Centrum

EURO-INDEX is van alle vertegenwoordigde merken een Geautoriseerd Service Centrum.

Dit betekent dat uw instrumenten worden behandeld door goed opgeleid en kundig personeel, dat beschikt over de juiste gereedschappen en software. Er worden uitsluitend originele onderdelen gebruikt en de garantie van uw instrument, evenals de certificering (ATEX, EN50379, etc.) blijven intact.

## Service- en kalibratielaboratorium

EURO-INDEX beschikt over een bijzonder modern service- en kalibratielaboratorium met RvA accreditatie naar NEN-EN-ISO/IEC 17025. Deze accreditatie geldt voor verschillende grootheden, zoals gespecificeerd in de scope bij accreditatienummer K105.



## KWS®

KWS is een uniek servicesysteem voor uw meetinstrumenten met periodiek onderhoud en kalibratie. Veel zaken worden voor u geregeld, zodat u zonder zorgen gebruik kunt maken van uw meetinstrumenten. De kosten zijn laag en voorspelbaar.

## Digitale toegang tot uw kalibratiecertificaten met Mijn KWS

Via het Mijn KWS webportal heeft u altijd en overal toegang tot uw kalibratiecertificaten en gerelateerde documenten.

## Verhuur van meetinstrumenten

- Uitgebreid assortiment
- Deskundig advies
- Instrumenten worden geleverd met accessoirepakket en herleidbaar kalibratiecertificaat

## EURO-INDEX Academy

- Producttrainingen (individueel en klassikaal)
- Seminars
- Demonstratie- en instructievideo's

Bekijk de video op ons YouTube kanaal en ontdek alles over KWS



Servicebalie



Kalibratie rookgasanalyse



Seminars en workshops



Kalibratie thermografie

Wijzigingen voorbehouden EURO-INDEX® VL 18001

Het Bluetooth® woord- en beeldmerk zijn eigendom van Bluetooth SIG, Inc. Gebruik van deze merken door EURO-INDEX geschiedt onder licentie.



**BELGIË**  
Leuvensesteenweg 607  
1930 Zaventem  
T: 02 - 757 92 44  
F: 02 - 757 92 64  
info@euro-index.be  
www.euro-index.be

**NEDERLAND**  
Rivium 2e straat 12  
2909 LG Capelle a/d IJssel  
T: +31 - (0)10 - 2 888 000  
F: +31 - (0)10 - 2 888 010  
verkoop@euro-index.nl  
www.euro-index.nl

