



# HOT

HighOptimizedTechnology



For daily electrical, mechanical, industrial  
and photovoltaic applications

	THT8	THT80	THT120	THT200	THT300	
<b>IR resolution</b>	120x90 pxl	120x90 pxl	120x120 pxl	160x120 pxl	384x288 pxl	
<b>Temperature range</b>	-20° ÷ 400°C	-20° ÷ 550°C	-20° ÷ 650°C	-20° ÷ 650°C	-20° ÷ 650°C	
<b>Image frequency</b>	25Hz	50Hz	50Hz	50Hz	50Hz	
<b>Thermal sensitivity/NETD</b>	<0.05°C @ 30°C / 50mK	<0.06°C @ 30°C / 50mK	<0.05°C @ 30°C / 50mK	<0.05°C @ 30°C / 50mK	<0.05°C @ 30°C / 50mK	
<b>Built-in visual camera</b>	-	2 MP, focus free, built in LED light	2 MP, focus free	2 MP, focus free	2 MP, focus free	
<b>Picture in Picture</b>	-	●	●	●	●	
<b>AutoFusion image enhancement</b>	-	●	●	●	●	
<b>Accuracy</b>	±3°C (±5.4°F) or ±3% of the reading	±2°C (±3.6°F) or ±2% of the reading	±2°C (±3.6°F) or ±2% of the reading	±2°C (±3.6°F) or ±2% of the reading	±2°C (±3.6°F) or ±2% of the reading	
<b>Field of view (FOV) / Focal length / Lens</b>	50° x 38° / f 1.13 2.3mm	50° x 37° / f 1.13 2.3mm	15.6° x 15.6° / f 1.0 7.5mm	20.7° x 15.6° / f 1.0 7.5mm	41.5° x 31.1° / f 1.0 9mm	
<b>I FOV</b>	7.29mrad	7.3mrad	2.26mrad	2.26mrad	1.89mrad	
<b>Focus mode</b>	focus free	focus free	focus free	manual	manual	
<b>Digital zoom</b>	-	1–32x continuous	1–32x continuous	1–32x continuous	1–32x continuous	
<b>Measurement tools (in live mode)</b>	5 spots, center spot, hot/cold spots, 2 areas, 4 lines	3 spots, center spot, hot/cold spots, 3 areas, vertical and horizontal lines				
<b>Area measurement information</b>	max, min, AVG	max, min, center	max, min, AVG	max, min, AVG	max, min, AVG	
<b>IR Video recording</b>	●	●	●	●	●	
<b>Measurement corrections</b>	-			emissivity, reflected temperature,		
<b>Color palettes</b>	iron, rainbow, white hot, black hot, medical, artic, hot iron, fulgurite			iron, rainbow, white hot, black hot,		
<b>Span modes</b>	-	auto, manual, histogram	auto, manual, histogram	auto, manual, histogram	auto, manual, histogram	
<b>Laser pointer</b>	-	-	-	-	-	
<b>Laser distance meter</b>	-	-	-	-	-	
<b>Built in LED light</b>	smartphone torch	●				
<b>Internal memory storage</b>	smartphone storage	3,4 GB	3,4 GB	3,4 GB	3,4 GB	
<b>On-camera report building</b>	-	text annotation	text annotation	text annotation	text annotation	
<b>Communication modes</b>	USB type C	USB type C, Wi-fi, micro SD	USB type C, Wi-fi, micro SD	USB type C, Wi-fi, micro SD	USB type C, Wi-fi, micro SD	
<b>Display</b>	smartphone display	touch screen	touch screen	touch screen	touch screen	
<b>Battery operation time</b>	-	3 hours	4 hours	4 hours	4 hours	
<b>Dimensions (L x W x H)</b>	50 x 30 x 20mm	133 x 87 x 24mm	240 x 101 x 110mm	240 x 101 x 110mm	240 x 101 x 110mm	

# Technical spec

	THT400	THT500	THT600	THT600L	THT500H	THT600H
	640x480 pxl	160x120 pxl	384x288 pxl	384x288 pxl	160x120 pxl	384x288 pxl
	-20° ÷ 550°C	-20° ÷ 650°C	-20° ÷ 650°C	-20° ÷ 650°C	-20° ÷ 1200°C	-20° ÷ 1200°C
	25Hz	50Hz	50Hz	50Hz	50Hz	50Hz
	<0.05°C @ 30°C / 50mK	<0.05°C @ 30°C / 50mK	<0.05°C @ 30°C / 50mK	<0.05°C @ 30°C / 50mK	<0.05°C @ 30°C / 50mK	<0.05°C @ 30°C / 50mK
	2 MP	5 MP, focus free	5 MP, focus free	5 MP, focus free	5 MP, focus free	5 MP, focus free
	●	●	●	●	●	●
	●	●	●	●	●	●
	±2°C (±3.6°F) or ±2% of the reading	±2°C (±3.6°F) or ±2% of the reading	±2°C (±3.6°F) or ±2% of the reading	±2°C (±3.6°F) or ±2% of the reading	±2°C (±3.6°F) or ±2% of the reading	±2°C (±3.6°F) or ±2% of the reading
	31.9° x 25.7° / f1.0 9mm	17.3° x 13° / f1.0 9mm	17° x 12.7° / f1.0 22mm	9.8° x 7.3° / f1.0 38mm	17.3° x 13° / f1.0 9mm	17° x 12.7° / f1.0 22mm
	1.89mrad	1.89mrad	0.77mrad	0.45mrad	1.89mrad	1.89mrad
	manual	manual	manual	manual	manual	manual
	1–32x continuous	1–32x continuous	1–32x continuous	1–32x continuous	1–32x continuous	1–32x continuous
	none, center spot, 3 spots, hot/cold spots, 3 areas, vertical and horizontal lines, screening mode					
	max, min, AVG	max, min, AVG	max, min, AVG	max, min, AVG	max, min, AVG	max, min, AVG
	●	●	●	●	●	●
	ambient temperature, atmospheric humidity, infrared compensation, distance compensation					
	brown hot, blue/red, hot/cold, feather, above max alarm, below min alarm, interval alarm					
	auto, manual, histogram	auto, manual, histogram	auto, manual, histogram	auto, manual, histogram	auto, manual, histogram	auto, manual, histogram
	-	●	●	●	●	●
	-	●	●	●	●	●
		●	●	●	●	●
	3,4 GB	3,4 GB	3,4 GB	3,4 GB	3,4 GB	3,4 GB
	text annotation	text annotation, voice annotation	text annotation, voice annotation	text annotation, voice annotation	text annotation, voice annotation	text annotation, voice annotation
	USB type C, Wi-fi, micro SD	micro USB, Wi-fi, micro SD, micro HDMI	micro USB, Wi-fi, micro SD, micro HDMI	micro USB, Wi-fi, micro SD, micro HDMI	micro USB, Wi-fi, micro SD, micro HDMI	micro USB, Wi-fi, micro SD, micro HDMI
	touch screen	touch screen	touch screen	touch screen	touch screen	touch screen
	4 hours	4 hours	4 hours	4 hours	4 hours	4 hours
	240 x 101 x 110mm	272 x 100 x 120mm	270 x 101 x 168mm	270 x 101 x 168mm	270 x 101 x 168mm	270 x 101 x 168mm

Specifications

# High Resolution

High resolution means maximum performance and versatility. THT400 represents the top of the range among HT thermal imaging cameras in terms of resolution, making it perfect for inspections on mechanical systems, electrical installations, HVAC systems and for high-level building inspections.



ORDER CODE  
**HNTHT400**



## THT400

**640x480**  
PIXEL

TEMPERATURE  
RANGE  
**-20°÷550°C**

FIELD  
OF VIEW  
**31.9°x25.7°**

- › PictureinPicture
- › AutoFusion image enhancement
- › Thermal sensitivity:  
<0.05°C @ 30°C / 50mK
- › Compatible with HT Pro Camera



COMPATIBLE WITH  
**HT PRO CAMERA**

**HIGH**  
RESOLUTION  
**640x480**  
pxl

# High Resolution

# HVAC/R Electrical & Mechanical application

HVAC, electrical and mechanical system maintenance are of prime importance. HT new entry-level range of thermal imaging cameras composed of THT300, THT200 and THT120 allows you to detect the most common problems affecting these systems.



ORDER CODE  
**HN000300**



## THT300

**384x288** TEMPERATURE RANGE FIELD OF VIEW  
PIXEL **-20° ÷ 650°C** **41.5°x31.1°**

ORDER CODE  
**HN000200**



## THT200

**160x120** TEMPERATURE RANGE FIELD OF VIEW  
PIXEL **-20° ÷ 650°C** **20.7°x15.6°**

ORDER CODE  
**HN000120**



## THT120

**120x120** TEMPERATURE RANGE FIELD OF VIEW  
PIXEL **-20° ÷ 650°C** **15.6°x15.6°**

### COMMON FEATURES

- › PictureinPicture
- › AutoFusion image enhancement
- › Temperature range: -20° ÷ 650°C
- › Thermal sensitivity: <0.05°C @ 30°C / 50mK



COMPATIBLE WITH  
**HT PRO CAMERA**

# Electrical & Mechanical

# Industrial application/ Utility

When it comes to industrial and high voltage applications, damages caused by poor maintenance of corrosion over time can be severe and very costly. Inspection and troubleshooting has to be of high quality. HT advanced thermal imaging cameras are perfect for this application.



ORDER CODE  
**HN00600L**



## THT600L

**384x288** TEMPERATURE RANGE FIELD OF VIEW  
PIXEL **-20°÷650°C** **9.8°x7.3°**

ORDER CODE  
**HN00600**



## THT600

**384x288** TEMPERATURE RANGE FIELD OF VIEW  
PIXEL **-20°÷650°C** **17°x12.7°**

ORDER CODE  
**HN000500**



## THT500

**160x120** TEMPERATURE RANGE FIELD OF VIEW  
PIXEL **-20°÷650°C** **17.3°x13°**

### COMMON FEATURES

- › PictureinPicture
- › AutoFusion image enhancement
- › Thermal sensitivity: <0.05°C @ 30°C / 50mK
- › Laser distance meter
- › Built in LED light
- › Hand strap



COMPATIBLE WITH  
**HT PRO CAMERA**

# Industrial application

# High Temperature

The higher the temperatures, the higher the risks. Thanks to HT advanced thermal imaging cameras specialized in high temperature measurement, you will operate safely in any environment.



ORDER CODE  
**HN00600H**



## THT600H

**384x288** TEMPERATURE RANGE FIELD OF VIEW  
PIXEL **-20°÷1200°C** **17°x12.7°**

ORDER CODE  
**HN00500H**



## THT500H

**160x120** TEMPERATURE RANGE FIELD OF VIEW  
PIXEL **-20°÷1200°C** **17.3°x13°**

### COMMON FEATURES

- › Picture in Picture
- › AutoFusion image enhancement
- › Thermal sensitivity: <math><0.05^{\circ}\text{C}</math> @ 30°C / 50mK
- › Laser distance meter
- › Built in LED light
- › Hand strap

**HIGH**  
TEMPERATURE  
**1200°C**



COMPATIBLE WITH  
HT PRO CAMERA

# High Temperature

# Compact & pocket sized

Small and excellent, HT infrared technology is now pocket-sized. With your compact IR camera you can easily and quickly carry out your inspections at any time.



ORDER CODE  
**HN008000**



## THT80

**120x90**  
PIXEL

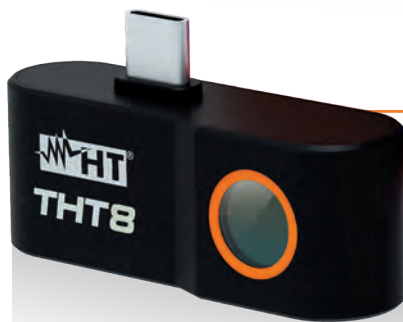
TEMPERATURE  
RANGE  
**-20°÷550°C**

FIELD  
OF VIEW  
**50°x37°**

- › AutoFusion
- › Touchscreen



COMPATIBLE WITH  
**HT PRO CAMERA**



ORDER CODE  
**HN000080**



## THT8

**120x90**  
PIXEL

TEMPERATURE  
RANGE  
**-20°÷400°C**

FIELD  
OF VIEW  
**50°x38°**

- › Android compatibility
- › USB type C



COMPATIBLE WITH  
**HT SMART CAMERA**



**HT ITALIA S.R.L.**

Via della Boaria, 40 48018 Faenza (RA) Italy

**T** +39 0546 621002 | **F** +39 0546 621144

**M** export@ht-instruments.com | **ht-instruments.com**





# Diensten van EURO-INDEX

EURO-INDEX is fabrikant, importeur en distributeur van diverse A-merken op het gebied van test- en meetinstrumenten. Daarnaast leveren wij een groot aantal diensten om het gebruik van deze instrumenten in uw bedrijfsvoering te optimaliseren. Dit omvat uiteraard onderhoud, reparatie en kalibratie van de instrumenten, maar ook kennisdeling via EURO-INDEX Academy en verhuur van instrumenten.

## Geautoriseerd Service Centrum

EURO-INDEX b.v. is van alle vertegenwoordigde merken een Geautoriseerd Service Centrum. Dit betekent dat uw instrumenten worden behandeld door technici die zijn opgeleid door de fabrikant en beschikken over de juiste gereedschappen en software. Er worden uitsluitend originele onderdelen toegepast en de garantie van uw instrument, evenals de certificering (ATEX, EN50379, etc.) blijven intact.

## Kalibratielaboratorium

Het laboratorium in Nederland beschikt over een RvA accreditatie naar EN-ISO/IEC 17025. Deze accreditatie geldt voor grootheden, zoals gespecificeerd in de scope bij accreditatienummer K105. RvA kalibratiecertificaten zijn internationaal geaccepteerd en is gelijkwaardig aan BELAC.



## Mobiele Service

Naast de vaste kalibratielaboratoria in Zaventem en Capelle aan den IJssel beschikken wij ook over een laboratorium op wielen met de naam "Mobiele Service". Dit biedt vertrouwde service en kwaliteit, bij u voor de deur!

## KWS®

KWS® is een uniek servicesysteem voor uw meetinstrumenten met periodiek onderhoud en kalibratie tegen vaste, lage kosten. Via een gratis webportal ([mijnkws.be](http://mijnkws.be)) heeft u altijd en overal beschikking over uw kalibratiecertificaten.

## Verhuur van meetinstrumenten

- Uitgebreid assortiment
- Nauwkeurigheid aantoonbaar door actueel kalibratiecertificaat
- Deskundig advies
- Complete levering inclusief accessoires

## EURO-INDEX Academy

- Trainingen, seminars en workshops
- Demonstratie- en instructievideo's
- Application notes



Servicebalie



Onderhoud, reparatie en kalibratie



Trainingen en seminars



Mobiele Service

Wijzigingen voorbehouden EURO-INDEX® VL 23001



**BELGIË**  
Leuvensesteenweg 607  
1930 Zaventem  
T: 02 - 757 92 44  
F: 02 - 757 92 64  
[sales@euro-index.be](mailto:sales@euro-index.be)  
[www.euro-index.be](http://www.euro-index.be)

**NERLAND**  
Rivium 2e straat 12  
2909 LG Capelle a/d IJssel  
T: +31 - (0)10 - 2 888 000  
F: +31 - (0)10 - 2 888 010  
[verkoop@euro-index.nl](mailto:verkoop@euro-index.nl)  
[www.euro-index.nl](http://www.euro-index.nl)

