



# HOT

HighOptimizedTechnology



For daily electrical, mechanical, industrial  
and photovoltaic applications

	THT8	THT80	THT120	THT200	THT300	
<b>IR resolution</b>	120x90 pxl	120x90 pxl	120x120 pxl	160x120 pxl	384x288 pxl	
<b>Temperature range</b>	-20° ÷ 400°C	-20° ÷ 550°C	-20° ÷ 650°C	-20° ÷ 650°C	-20° ÷ 650°C	
<b>Image frequency</b>	25Hz	50Hz	50Hz	50Hz	50Hz	
<b>Thermal sensitivity/NETD</b>	<0.05°C @ 30°C / 50mK	<0.06°C @ 30°C / 50mK	<0.05°C @ 30°C / 50mK	<0.05°C @ 30°C / 50mK	<0.05°C @ 30°C / 50mK	
<b>Built-in visual camera</b>	-	2 MP, focus free, built in LED light	2 MP, focus free	2 MP, focus free	2 MP, focus free	
<b>Picture in Picture</b>	-	●	●	●	●	
<b>AutoFusion image enhancement</b>	-	●	●	●	●	
<b>Accuracy</b>	±3°C (±5.4°F) or ±3% of the reading	±2°C (±3.6°F) or ±2% of the reading	±2°C (±3.6°F) or ±2% of the reading	±2°C (±3.6°F) or ±2% of the reading	±2°C (±3.6°F) or ±2% of the reading	
<b>Field of view (FOV) / Focal length / Lens</b>	50° x 38° / f 1.13 2.3mm	50° x 37° / f 1.13 2.3mm	15.6° x 15.6° / f 1.0 7.5mm	20.7° x 15.6° / f 1.0 7.5mm	41.5° x 31.1° / f 1.0 9mm	
<b>I FOV</b>	7.29mrad	7.3mrad	2.26mrad	2.26mrad	1.89mrad	
<b>Focus mode</b>	focus free	focus free	focus free	manual	manual	
<b>Digital zoom</b>	-	1–32x continuous	1–32x continuous	1–32x continuous	1–32x continuous	
<b>Measurement tools (in live mode)</b>	5 spots, center spot, hot/cold spots, 2 areas, 4 lines	3 spots, center spot, hot/cold spots, 3 areas, vertical and horizontal lines				
<b>Area measurement information</b>	max, min, AVG	max, min, center	max, min, AVG	max, min, AVG	max, min, AVG	
<b>IR Video recording</b>	●	●	●	●	●	
<b>Measurement corrections</b>	-			emissivity, reflected temperature,		
<b>Color palettes</b>	iron, rainbow, white hot, black hot, medical, artic, hot iron, fulgurite			iron, rainbow, white hot, black hot,		
<b>Span modes</b>	-	auto, manual, histogram	auto, manual, histogram	auto, manual, histogram	auto, manual, histogram	
<b>Laser pointer</b>	-	-	-	-	-	
<b>Laser distance meter</b>	-	-	-	-	-	
<b>Built in LED light</b>	smartphone torch	●				
<b>Internal memory storage</b>	smartphone storage	3,4 GB	3,4 GB	3,4 GB	3,4 GB	
<b>On-camera report building</b>	-	text annotation	text annotation	text annotation	text annotation	
<b>Communication modes</b>	USB type C	USB type C, Wi-fi, micro SD	USB type C, Wi-fi, micro SD	USB type C, Wi-fi, micro SD	USB type C, Wi-fi, micro SD	
<b>Display</b>	smartphone display	touch screen	touch screen	touch screen	touch screen	
<b>Battery operation time</b>	-	3 hours	4 hours	4 hours	4 hours	
<b>Dimensions (L x W x H)</b>	50 x 30 x 20mm	133 x 87 x 24mm	240 x 101 x 110mm	240 x 101 x 110mm	240 x 101 x 110mm	

# Technical spec

	THT400	THT500	THT600	THT600L	THT500H	THT600H
	640x480 pxl	160x120 pxl	384x288 pxl	384x288 pxl	160x120 pxl	384x288 pxl
	-20° ÷ 550°C	-20° ÷ 650°C	-20° ÷ 650°C	-20° ÷ 650°C	-20° ÷ 1200°C	-20° ÷ 1200°C
	25Hz	50Hz	50Hz	50Hz	50Hz	50Hz
	<0.05°C @ 30°C / 50mK	<0.05°C @ 30°C / 50mK	<0.05°C @ 30°C / 50mK	<0.05°C @ 30°C / 50mK	<0.05°C @ 30°C / 50mK	<0.05°C @ 30°C / 50mK
	2 MP	5 MP, focus free	5 MP, focus free	5 MP, focus free	5 MP, focus free	5 MP, focus free
	●	●	●	●	●	●
	●	●	●	●	●	●
	±2°C (±3.6°F) or ±2% of the reading	±2°C (±3.6°F) or ±2% of the reading	±2°C (±3.6°F) or ±2% of the reading	±2°C (±3.6°F) or ±2% of the reading	±2°C (±3.6°F) or ±2% of the reading	±2°C (±3.6°F) or ±2% of the reading
	31.9° x 25.7° / f1.0 9mm	17.3° x 13° / f1.0 9mm	17° x 12.7° / f1.0 22mm	9.8° x 7.3° / f1.0 38mm	17.3° x 13° / f1.0 9mm	17° x 12.7° / f1.0 22mm
	1.89mrad	1.89mrad	0.77mrad	0.45mrad	1.89mrad	1.89mrad
	manual	manual	manual	manual	manual	manual
	1–32x continuous	1–32x continuous	1–32x continuous	1–32x continuous	1–32x continuous	1–32x continuous
	none, center spot, 3 spots, hot/cold spots, 3 areas, vertical and horizontal lines, screening mode					
	max, min, AVG	max, min, AVG	max, min, AVG	max, min, AVG	max, min, AVG	max, min, AVG
	●	●	●	●	●	●
	ambient temperature, atmospheric humidity, infrared compensation, distance compensation					
	brown hot, blue/red, hot/cold, feather, above max alarm, below min alarm, interval alarm					
	auto, manual, histogram	auto, manual, histogram	auto, manual, histogram	auto, manual, histogram	auto, manual, histogram	auto, manual, histogram
	-	●	●	●	●	●
	-	●	●	●	●	●
		●	●	●	●	●
	3,4 GB	3,4 GB	3,4 GB	3,4 GB	3,4 GB	3,4 GB
	text annotation	text annotation, voice annotation	text annotation, voice annotation	text annotation, voice annotation	text annotation, voice annotation	text annotation, voice annotation
	USB type C, Wi-fi, micro SD	micro USB, Wi-fi, micro SD, micro HDMI	micro USB, Wi-fi, micro SD, micro HDMI	micro USB, Wi-fi, micro SD, micro HDMI	micro USB, Wi-fi, micro SD, micro HDMI	micro USB, Wi-fi, micro SD, micro HDMI
	touch screen	touch screen	touch screen	touch screen	touch screen	touch screen
	4 hours	4 hours	4 hours	4 hours	4 hours	4 hours
	240 x 101 x 110mm	272 x 100 x 120mm	270 x 101 x 168mm	270 x 101 x 168mm	270 x 101 x 168mm	270 x 101 x 168mm

Specifications

# High Resolution

High resolution means maximum performance and versatility. THT400 represents the top of the range among HT thermal imaging cameras in terms of resolution, making it perfect for inspections on mechanical systems, electrical installations, HVAC systems and for high-level building inspections.



ORDER CODE  
**HNTHT400**



## THT400

**640x480**  
PIXEL

TEMPERATURE  
RANGE  
**-20°÷550°C**

FIELD  
OF VIEW  
**31.9°x25.7°**

- › PictureinPicture
- › AutoFusion image enhancement
- › Thermal sensitivity:  
<0.05°C @ 30°C / 50mK
- › Compatible with HT Pro Camera



COMPATIBLE WITH  
**HT PRO CAMERA**

**HIGH**  
RESOLUTION  
**640x480**  
pxl

# High Resolution

# HVAC/R Electrical & Mechanical application

HVAC, electrical and mechanical system maintenance are of prime importance. HT new entry-level range of thermal imaging cameras composed of THT300, THT200 and THT120 allows you to detect the most common problems affecting these systems.



ORDER CODE  
**HN000300**



## THT300

**384x288** TEMPERATURE RANGE FIELD OF VIEW  
PIXEL **-20° ÷ 650°C** **41.5°x31.1°**

ORDER CODE  
**HN000200**



## THT200

**160x120** TEMPERATURE RANGE FIELD OF VIEW  
PIXEL **-20° ÷ 650°C** **20.7°x15.6°**

ORDER CODE  
**HN000120**



## THT120

**120x120** TEMPERATURE RANGE FIELD OF VIEW  
PIXEL **-20° ÷ 650°C** **15.6°x15.6°**

### COMMON FEATURES

- › PictureinPicture
- › AutoFusion image enhancement
- › Temperature range: -20° ÷ 650°C
- › Thermal sensitivity: <0.05°C @ 30°C / 50mK



COMPATIBLE WITH  
**HT PRO CAMERA**

# Electrical & Mechanical

# Industrial application/ Utility

When it comes to industrial and high voltage applications, damages caused by poor maintenance of corrosion over time can be severe and very costly. Inspection and troubleshooting has to be of high quality. HT advanced thermal imaging cameras are perfect for this application.



ORDER CODE  
**HN00600L**



## THT600L

**384x288** TEMPERATURE RANGE FIELD OF VIEW  
PIXEL **-20°÷650°C** **9.8°x7.3°**

ORDER CODE  
**HN00600**



## THT600

**384x288** TEMPERATURE RANGE FIELD OF VIEW  
PIXEL **-20°÷650°C** **17°x12.7°**

ORDER CODE  
**HN000500**



## THT500

**160x120** TEMPERATURE RANGE FIELD OF VIEW  
PIXEL **-20°÷650°C** **17.3°x13°**

### COMMON FEATURES

- › PictureinPicture
- › AutoFusion image enhancement
- › Thermal sensitivity: <0.05°C @ 30°C / 50mK
- › Laser distance meter
- › Built in LED light
- › Hand strap



COMPATIBLE WITH  
**HT PRO CAMERA**

# Industrial application

# High Temperature

The higher the temperatures, the higher the risks. Thanks to HT advanced thermal imaging cameras specialized in high temperature measurement, you will operate safely in any environment.



ORDER CODE  
**HN00600H**



## THT600H

**384x288** TEMPERATURE RANGE FIELD OF VIEW  
PIXEL **-20°÷1200°C** **17°x12.7°**

ORDER CODE  
**HN00500H**



## THT500H

**160x120** TEMPERATURE RANGE FIELD OF VIEW  
PIXEL **-20°÷1200°C** **17.3°x13°**

### COMMON FEATURES

- › Picture in Picture
- › AutoFusion image enhancement
- › Thermal sensitivity: <math><0.05^{\circ}\text{C}</math> @ 30°C / 50mK
- › Laser distance meter
- › Built in LED light
- › Hand strap

**HIGH**  
TEMPERATURE  
**1200°C**



COMPATIBLE WITH  
HT PRO CAMERA

# High Temperature

# Compact & pocket sized

Small and excellent, HT infrared technology is now pocket-sized. With your compact IR camera you can easily and quickly carry out your inspections at any time.



ORDER CODE  
**HN008000**



## THT80

**120x90**  
PIXEL

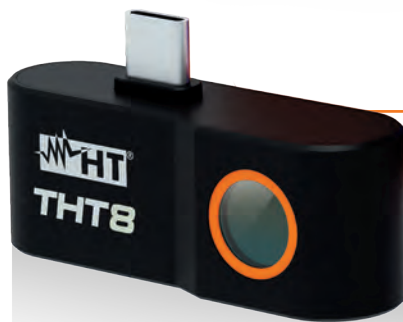
TEMPERATURE  
RANGE  
**-20°÷550°C**

FIELD  
OF VIEW  
**50°x37°**

- › AutoFusion
- › Touchscreen



COMPATIBLE WITH  
**HT PRO CAMERA**



ORDER CODE  
**HN000080**



## THT8

**120x90**  
PIXEL

TEMPERATURE  
RANGE  
**-20°÷400°C**

FIELD  
OF VIEW  
**50°x38°**

- › Android compatibility
- › USB type C



COMPATIBLE WITH  
**HT SMART CAMERA**



**HT ITALIA S.R.L.**

Via della Boaria, 40 48018 Faenza (RA) Italy

**T** +39 0546 621002 | **F** +39 0546 621144

**M** export@ht-instruments.com | **ht-instruments.com**





# Services d'EURO-INDEX

EURO-INDEX est un fabricant, importateur et distributeur de diverses marques A dans le domaine des instruments de test et de mesure. Nous fournissons également une large gamme de services pour optimiser l'utilisation de ces instruments dans vos activités. Ces services comprennent naturellement l'entretien, la réparation et l'étalonnage des instruments, mais nous proposons aussi une assistance sous forme de formation via notre EURO-INDEX Academy et la location d'instruments.

## Centre de Service Agréé

EURO-INDEX est un Centre de Service Agréé pour toutes les marques représentées. Cela signifie que vos instruments sont pris en charge par des techniciens formés par le fabricant et disposant des outils et logiciels adéquats. Seules des pièces d'origine sont utilisées et la garantie de votre instrument, ainsi que les certifications (ATEX, EN50379, etc.) restent intactes.

## Laboratoire de maintenance et de calibrage

Le laboratoire des Pays-Bas est accrédité RvA selon la norme EN-ISO/IEC 17025. Cette accréditation est valable pour différentes grandeurs, telles que spécifiées dans le champ d'application associé au numéro d'accréditation K105. Les certificats de calibrage RvA sont acceptés à l'international et équivalents à ceux de BELAC.



## Service Mobile

Outre les laboratoires d'étalonnage fixes de Zaventem et de Capelle aan den IJssel, nous disposons également d'un laboratoire itinérant appelé "Service mobile". Nos services peuvent venir vers vous, en offrant une qualité équivalente.

## MQS®

MQS® est une formule d'entretien exclusive comportant un entretien et un calibrage périodiques de vos instruments de mesure à un coût fixe et faible. Via un portail Web gratuit ([monmq.be](http://monmq.be)), vous avez toujours accès à vos certificats de calibrage.

## Location d'instruments de mesure

- Vaste assortiment
- Précision démontrable par le certificat d'étalonnage actuel
- Conseils avisés
- Les instruments sont livrés avec leurs accessoires

## EURO-INDEX Academy

- Formations et séminaires
- Vidéos de démonstration et d'instruction
- Notes d'application



Comptoir de service



Entretien, réparation et calibrage



Formations et séminaires



Service Mobile

Sous réserve de modifications EURO-INDEX® FR 23001



BELGIQUE

Chaussée de Louvain 607  
1930 Zaventem  
T: 02 - 757 92 44  
F: 02 - 757 92 64  
[sales@euro-index.be](mailto:sales@euro-index.be)  
[www.euro-index.be](http://www.euro-index.be)

PAYS-BAS

Rivium 2e straat 12  
2909 LG Capelle a/d IJssel  
T: +31 - (0)10 - 2 888 000  
F: +31 - (0)10 - 2 888 010  
[verkoop@euro-index.nl](mailto:verkoop@euro-index.nl)  
[www.euro-index.nl](http://www.euro-index.nl)

