



SUN

SolarUnbelievableNews



For daily application in photovoltaic systems



Energy needs to be controlled.

By HT.

Solar energy production plants represent a crucial step towards a **virtuous** and **sustainable** future.

A future that is constantly evolving and needs to be cared for, controlled, managed, and guaranteed in an accurate and professional manner.

For these purposes, **HT Italia** provides you with optimal and **efficient instruments** for overseeing and **maintaining photovoltaic plants**. This includes **monitoring efficiency** and conducting quality **analyses**, all accessible via **Wi-Fi** directly on your devices.

Energy needs to be monitored, and HT knows how to do it.



FUNCTION

GFL

Identification and localization of the fault

INSULATION

1500 VDC

For photovoltaic systems

Tests in

DUAL

MODE

Localization of the faulty pole

ORDER CODE **HVOPVISO**

PV-ISOTEST

MULTIFUNCTION INSTRUMENT FOR COMMISSIONING, TESTING THE ELECTRIC SAFETY AND SEARCHING FOR FAULTS

- › Insulation measurement up to 1500VDC
- › Localization of the faulty module through the new GFL function
- › Insulation measuring modes DUAL and TIMER for checking the state of deterioration of the insulation
- › Continuity of protective conductors with 200mA



SEE THE
TECHNICAL
DATA SHEET



WATCH
THE VIDEO
TUTORIAL

HT Photovol



AUTO TEST

INSULATION MAX
1000 V

ORDER CODE **HV00PVCS**

PV-CHECKS

MULTIFUNCTION INSTRUMENT FOR COMMISSIONING TESTS AND PERFORMANCE VERIFICATION

- › Insulation measurement up to 1000VDC
- › Open-circuit voltage measurement up to 1000V DC
- › Short-circuit current measurement up to 15A at 1000VDC
- › Continuity of protective conductors with 200mA
- › Polarity
- › AUTO SEQUENCE
- › Performance logging of PV strings



SEE THE
TECHNICAL
DATA SHEET

NEW



GFL FUNCTION

1500V
40A

DUAL
MODE
Test

MONO-FACIAL
BI-FACIAL

ORDER CODE **HV00PVPR**

PV-CHECKS-PRO

COMMISSIONING TESTER OF PV INSTALLATIONS UP TO 1500V / 40A

- › A single GO-key stroke to perform all commissioning tests
- › Seamless mode to test in sequence all strings of a combiner box by a single GO-key stroke
- › Testing of single and bi-facial modules (even high efficiency) up to 1500V / 40A
- › All commissioning tests (continuity, polarity, Voc, Isc, insulation) on live installations
- › GFL - Ground Fault Locator to detect the precise position of the lack of insulation



SEE THE
TECHNICAL
DATA SHEET

NEW



1500V
40A



ORDER CODE HV0IV600

IV-600

I-V CURVE TRACER FOR MAINTENANCE AND TROUBLESHOOTING OF PHOTOVOLTAIC SYSTEMS UP TO 1500V AND 40A

- › I-V curve tracing of modules and strings **up to 1500V** and **40A**
- › Measurement of front-side and rear-side solar radiation for mono- and **bi-facial** module testing, even high efficiency
- › Measurement of **open-circuit voltage** and **short-circuit current** V_{oc}/I_{sc}
- › Database of **PV module performance**
- › **BMS (Battery Management System)** to self-recharge the batteries while testing
- › **Automatic acquisition** of the **cell calibration** value (by using suitable cells)



SEE THE
TECHNICAL
DATA SHEET



WIFI
CONNECTION

I-V CURVE
MAX

15A

AUTO
TEST

MAX
1500 V

ORDER CODE HV000IVE

SOLAR I-Ve

I-V CURVE TRACING OF PHOTOVOLTAIC MODULES AND STRINGS + EFFICIENCY OF THE PHOTOVOLTAIC SYSTEM

- › Measurement of inverter efficiency in single-string single-phase systems
- › I-V curve up to 1500V and 10A or up to 1000V and 15A
- › Power measurement of a module or a string
- › Open-circuit voltage (V_{oc}) up to 1500V
- › Short-circuit current (I_{sc}) up to 15A
- › Environmental and Cell temperature
- › No distance limit for environmental measurements through remote unit SOLAR-02
- › AUTOSTART to run the test automatically
- › WiFi connection to smartphones and tablets



SEE THE
TECHNICAL
DATA SHEET

HT Photovol



WiFi
CONNECTION

I-V CURVE

15A

MAX
1000 V

ORDER CODE **HV00400W**

I-V400w

I-V CURVE TRACING
ON PHOTOVOLTAIC MODULES
AND STRINGS

- › I-V curve up to 1000V and 15A
- › Power measurement of a module or a string
- › Open-circuit voltage (Voc) up to 1000V
- › Short-circuit current (Isc) up to 15A
- › Solar radiation measurement
- › Environmental and Cell temperature
- › No distance limit for environmental measurements through remote unit SOLAR-02
- › AUTOSTART to run the test automatically
- › WiFi connection to smartphones and tablets



SEE THE
TECHNICAL
DATA SHEET



WiFi
CONNECTION

I-V CURVE
MAX

15A

MAX
1500 V

ORDER CODE **HV00500W**

I-V500w

I-V CURVE TRACING OF MODULES
AND STRINGS

- › I-V curve up to 1500V and 10A or up to 1000V and 15A
- › Power measurement of a module or a string
- › Open-circuit voltage (Voc) up to 1500V
- › Short-circuit current (Isc) up to 15A
- › Radiation measurement
- › Environmental and Cell temperature measurement
- › No distance limit for environmental measurements through remote unit SOLAR-02
- › AUTOSTART to run the tests automatically
- › WiFi connection to smartphones and tablets



SEE THE
TECHNICAL
DATA SHEET

taic systems



ORDER CODE **HNTHT400**

THT400

HIGH RESOLUTION
TOUCH SCREEN
INFRARED CAMERA

640x480
PIXEL

TEMPERATURE RANGE
-20° ÷ 550°C

FIELD OF VIEW
31.9° x 25.7°



SEE THE
TECHNICAL
DATA SHEET



ORDER CODE **HN000300**

THT300

TOUCH SCREEN
INFRARED CAMERA

384x288
PIXEL

TEMPERATURE RANGE
-20° ÷ 650°C

FIELD OF VIEW
41.5° x 31.1°



SEE THE
TECHNICAL
DATA SHEET



ORDER CODE **HN000120**

THT120

TOUCH SCREEN
INFRARED CAMERA

120x120
PIXEL

TEMPERATURE RANGE
-20°÷650°C

FIELD OF VIEW
15.6°x15.6°



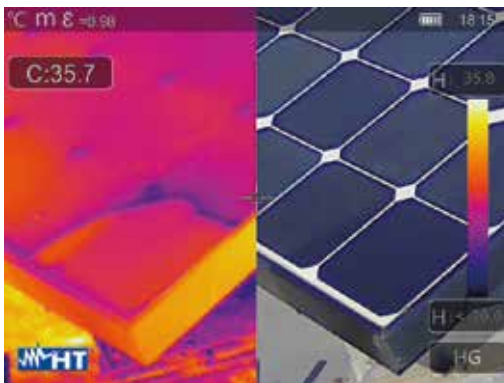
SEE THE
TECHNICAL
DATA SHEET



Photovoltaic system inspection

Thanks to the thermographic inspection of photovoltaic systems, hot spots and loose connections can be easily detected.

Picture: hot spots shot with THT300.



PV panels encapsulation

During long-term outdoor exposure, once moisture penetrates a module, it can condense and increase corrosion rates, significantly reducing the performance of the module. High resolution infrared cameras easily spot encapsulant failures.

Picture: encapsulant failure shot with THT600.

taic systems

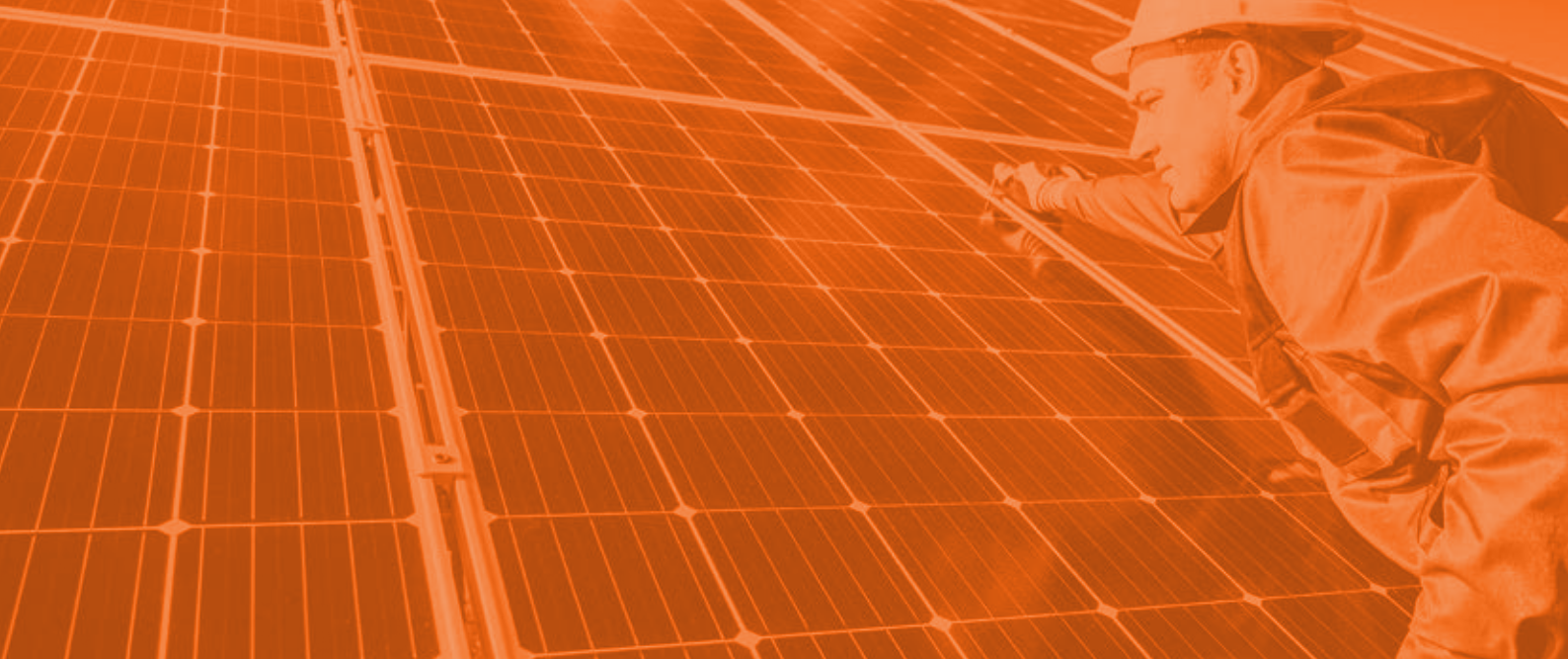


ACCESSORIES

	SOLAR I-Ve	I-V400w	I-V500w	PVCHECKs	PV-ISOTEST	PVCHECKs PRO	IV-600
TOPVIEW2006 PC Windows software + USB/optical cable	S	S	S	S	S	-	-
PT300N Temperature probe	S	O	O	O	-	-	-
PT305 PT1000 probe for module temperature measurement	-	-	-	-	-	O	S
SOLAR-02 Remote unit	S	O	O	O	-	-	-
SOLAR03 Remote unit	-	-	-	-	-	O	S
HT305 Reference cell for irradiance measurement with module mount	-	-	-	-	-	O	S
KIT2PRO15 Set of 2 cables banana-banana 3 meter long + 2 alligator clips (red and black) - 2 units	-	-	-	-	-	-	S
KIT4PRO15 Set of 4 cables banana-banana 4mm + 4 alligator clips (red, green, blu and black)	-	-	-	-	-	S	-
KITGSC4 Set of 4 cables + 4 alligator clips	S	S	S	S	S	-	-
KITPVMC4150 Set of 2 adapters male 4mm banana to MC4 compatible connector, 3 meter long	-	-	-	-	-	S	S
KITPVMC3 Set of 2 adapters with MC3 connectors	S	S	S	-	-	-	-
KITPVMC4 Set of 2 adapters with MC4 connectors	S	S	S	-	-	-	-
KITPCMC3 Set of 2 adapters with MC3 connectors	-	-	-	S	O	-	-
KITPCMC4 Set of 2 adapters with MC4 connectors	-	-	-	S	S	-	-
KITPVEXT25M 25 meter green and black extension cord	O	O	O	O	-	-	-
KITKELVIN Twin-cable set for AUTO SEQUENCE tests	O	O	O	-	-	-	-
KITK2TIPS15 Set of 2 PV4 compatible plugs	-	-	-	-	-	-	O
KITPVPROEXT20 2 banana male to female extension cables 20m (green and black)	-	-	-	-	-	O	O
606-IECN Connector with magnetic tip	O	O	O	O	O	-	-
HT304N Reference cell	S	S	S	O	-	-	-
M304 Mechanical inclinometer	S	S	S	O	-	O	S
HT4004 Standard 10-100A DC clamp, 30 mm	S	-	-	O	-	-	-
HT98U Standard 1000A DC clamp, 50 mm	O	-	-	O	-	-	-
HP30D1 Standard 1000A DC clamp, 83 mm	O	-	-	O	-	-	-
HT4005K Standard 200A AC clamp, 40 mm	S	-	-	-	-	-	-
HT4005N Standard 5-100A AC clamp, 20 mm	O	-	-	-	-	-	-
HT96U Standard 1-100-1000A AC clamp, 54 mm	O	-	-	-	-	-	-
HT97U Standard 10-100-1000A AC clamp, 54 mm	O	-	-	-	-	-	-
HP30C2 Standard 200-2000A AC clamp, 70 mm	O	-	-	-	-	-	-
HP30C3 Standard 3000A AC clamp, 70 mm	O	-	-	-	-	-	-
BORSA2051 Soft carrying bag	-	-	-	S	-	-	-
VA500 Rigid carrying case	S	S	S	O	-	-	-
VA507 Rigid carrying case	-	-	-	O	S	S	-
SP-2002 Magnetic strip for HT Instruments	-	-	-	-	-	-	S
SP-2003 Shoulder strap	-	-	-	-	-	-	S
SP-0400 Free hands kit	O	O	O	O	O	-	-
SP-0500 Free hands kit	O	O	O	O	O	-	-
SP-5100 Set of straps	-	-	-	-	-	S	-
CF832 32GB Memory card	-	-	-	-	-	-	S
A0061 External power charger with shuko-plug cable	-	-	-	-	-	-	S
C2006 Optical/U connection cable	-	-	-	-	-	S	-
C2010 Cable UsbA-UsbC 1,5mt	-	-	-	-	-	-	S
YABAT0003000 Rechargeable battery NiMH, 1.2V, type AA - 10 units	-	-	-	-	-	S (6pz)	S (10pz)
YABAT0004001 External battery charger for AA batteries	-	-	-	-	-	S	-
BORSAZAINO Professional HT backpack	-	-	-	-	-	-	S
ISO9000 test report Provided with I-V600, SOLAR-03 and HT305	-	-	-	-	-	S	S

- : Not compatible | S: Standard | O: Optional





bsh_FotoVoltaico2023_Eni+00



HT ITALIA S.R.L.

Via della Boaria, 40 48018 Faenza (RA) Italy

T +39 0546 621002 | **F** +39 0546 621144

M export@ht-instruments.com | **ht-instruments.com**



Diensten van EURO-INDEX

EURO-INDEX is fabrikant, importeur en distributeur van diverse A-merken op het gebied van test- en meetinstrumenten. Daarnaast leveren wij een groot aantal diensten om het gebruik van deze instrumenten in uw bedrijfsvoering te optimaliseren. Dit omvat uiteraard onderhoud, reparatie en kalibratie van de instrumenten, maar ook kennisdeling via EURO-INDEX Academy en verhuur van instrumenten.

Geautoriseerd Service Centrum

EURO-INDEX b.v. is van alle vertegenwoordigde merken een Geautoriseerd Service Centrum. Dit betekent dat uw instrumenten worden behandeld door technici die zijn opgeleid door de fabrikant en beschikken over de juiste gereedschappen en software. Er worden uitsluitend originele onderdelen toegepast en de garantie van uw instrument, evenals de certificering (ATEX, EN50379, etc.) blijven intact.

Kalibratielaboratorium

Het laboratorium in Nederland beschikt over een RvA accreditatie naar EN-ISO/IEC 17025. Deze accreditatie geldt voor grootheden, zoals gespecificeerd in de scope bij accreditatienummer K105. RvA kalibratiecertificaten zijn internationaal geaccepteerd en is gelijkwaardig aan BELAC.



Mobiele Service

Naast de vaste kalibratielaboratoria in Zaventem en Capelle aan den IJssel beschikken wij ook over een laboratorium op wielen met de naam "Mobiele Service". Dit biedt vertrouwde service en kwaliteit, bij u voor de deur!

KWS®

KWS® is een uniek servicesysteem voor uw meetinstrumenten met periodiek onderhoud en kalibratie tegen vaste, lage kosten. Via een gratis webportal (mijnkws.be) heeft u altijd en overal beschikking over uw kalibratiecertificaten.

Verhuur van meetinstrumenten

- Uitgebreid assortiment
- Nauwkeurigheid aantoonbaar door actueel kalibratiecertificaat
- Deskundig advies
- Complete levering inclusief accessoires

EURO-INDEX Academy

- Trainingen, seminars en workshops
- Demonstratie- en instructievideo's
- Application notes



Servicebalie



Onderhoud, reparatie en kalibratie



Trainingen en seminars



Mobiele Service

Wijzigingen voorbehouden EURO-INDEX® VL 23001



BELGIË
Leuvensesteenweg 607
1930 Zaventem
T: 02 - 757 92 44
F: 02 - 757 92 64
sales@euro-index.be
www.euro-index.be

NERLAND
Rivium 2e straat 12
2909 LG Capelle a/d IJssel
T: +31 - (0)10 - 2 888 000
F: +31 - (0)10 - 2 888 010
verkoop@euro-index.nl
www.euro-index.nl

