

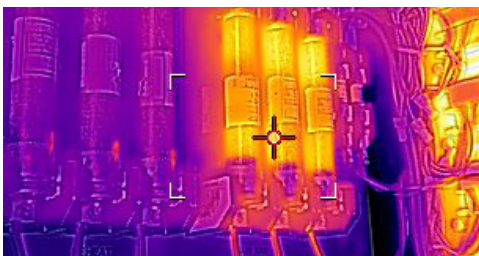


INFRARED CAMERA WITH MSX® & WI-FI

FLIR Ex-Series™

FLIR E4, E5-XT, E6-XT, and E8-XT are powerful, cost-effective, easy-to-use troubleshooting tools for building, electrical, and mechanical applications. With four resolution options—up to 320 × 240 infrared pixels—and the ability to accurately measure temperatures from -20°C to 550°C/-4°F to 1022°F (E6-XT and E8-XT), the Ex-Series has models to fit your target size, working distance, visual detail needs, and budget. All models include MSX® technology for extraordinary thermal imaging detail. Wi-Fi connectivity to smartphones and tablets via the FLIR Tools® Mobile app makes sharing images and sending reports from any location easier, enabling you to make critical decisions faster. With Ex-Series cameras, you can gain the competitive advantage by providing clients with thermal images that clearly reveal the source of electrical, mechanical, and building-related problems.

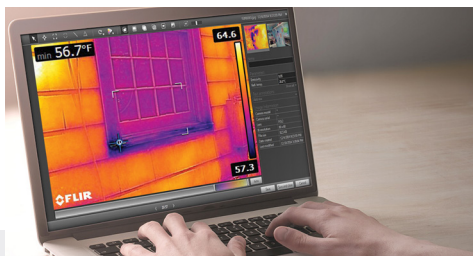
www.flir.com/Ex-Series



EASY TO USE

Intuitive graphic interface simplifies measurements in both thermal and MSX mode

- Fully automatic and focus-free
- Accurately measure your target using center spot or max/min area box
- Navigate easily to on-screen settings, image modes, and measurement tools using simple button controls
- Activate MSX to enhance IR images with visual detail for better perspective and interpretation



CONVENIENT TO SHARE IMAGES AND FINDINGS

Download images, create reports, and share what you've found instantly

- Records standard JPEGs with embedded temperature data for easy sharing with clients
- Wi-Fi connectivity to mobile devices via the FLIR Tools Mobile app
- Rapid Wi-Fi or USB image transfer for documentation
- Image analysis and editing, plus report creation, through FLIR Tools



COMPACT AND RUGGED

Built for portability and safe, efficient use in harsh environments

- Lightweight and well-balanced at just 1.2 lbs (0.575 kg)
- Withstands a 2-meter drop test
- IP54 Enclosure provides a high level of protection against dust and water
- Comes with 2-year warranty coverage on the camera and 10-year coverage for the detector

SPECIFICATIONS

| Image and optical data | E4 | E5-XT | E6-XT | E8-XT |
|-----------------------------------|--|---|--|--|
| IR resolution | 80 × 60 (4,800 pixels) | 160 × 120 (19,200 pixels) | 240 × 180 (43,200 pixels) | 320 × 240 (76,800 pixels) |
| Thermal sensitivity/NETD | <0.15°C (0.27°F) / <150 mK | <0.10°C (0.27°F) / <100 mK | <0.06°C (0.11°F) / <60 mK | <0.05°C (0.09°F) / <50 mK |
| Spatial resolution (IFOV) | 10.3 mrad | 5.2 mrad | 3.4 mrad | 2.6 mrad |
| Field of view (FOV) | 45° × 34° | | | |
| F-number | 1.5 | | | |
| Image frequency | 9 Hz | | | |
| Focus | Focus-free | | | |
| Detector data | | | | |
| Detector type | Focal Plane Array (FPA), uncooled microbolometer | | | |
| Spectral range | 7.5–13 μm | | | |
| Image presentation and modes | | | | |
| Display | 3" 320 × 240 color LCD | | | |
| Image adjustment | Automatic adjust/lock image | | | |
| Image modes | Thermal MSX, thermal, picture-in-picture, thermal blending, digital camera | | | |
| Color palettes | Iron, Rainbow, Black & White | | | |
| Measurement and analysis | | | | |
| Object temperature range | -20°C to 250°C (-4°F to 482°F) | -20°C to 400°C (-4°F to 752°F) in two ranges | -20°C to 550°C (-4°F to 1022°F) in two ranges | -20°C to 550°C (-4°F to 1022°F) in two ranges |
| Accuracy | ±2°C (±3.6°F) or ±2% of reading for ambient temperature 10°C to 35°C (50°F to 95°F) and object temperature above 0°C (32°F) | | | |
| Spotmeter | Center spot | | | |
| Area | Box with max/min | | | |
| Isotherm | Above alarm, below alarm | | | |
| Data communication and interfaces | | | | |
| Interfaces | USB Micro: data transfer to and from PC and Mac device | | | |
| Wi-Fi | Peer-to-peer or infrastructure | | | |
| File format | Standard JPEG, 14-bit measurement data included | | | |
| General | | | | |
| Operating temperature range | -15°C to 50°C (5°F to 122°F) | | | |
| Battery | Rechargeable 3.6 V Li ion battery | | | |
| Battery operating time | Approx. 4 hours at 25°C (77°F) ambient temperature and typical use | | | |
| Battery charging time | 2.5 hours to 90% capacity in camera. 2 hours in charger | | | |
| Drop | 2 m (6.6 ft.) | | | |
| Camera weight, incl. battery | 0.575 kg (1.27 lb.) | | | |
| Camera size (L × W × H) | 244 × 95 × 140 mm (9.6 × 3.7 × 5.5 in) | | | |
| Box contents | Infrared camera, hard transport case, battery, USB cable, power supply/charger with EU, UK, US and Australian plugs, printed documentation | | | |

Specifications are subject to change without notice. For the most up-to-date specs, go to www.flir.com

CORPORATE HEADQUARTERS

FLIR Systems, Inc.
27700 SW Parkway Ave.
Wilsonville, OR 97070
USA
PH: +1 866.477.3687

LATIN AMERICA

FLIR Systems Brasil
Av. Antonio Bardella, 320
Sorocaba, SP 18085-852
Brasil
PH: +55 15 3238 8070

BOSTON

FLIR Systems, Inc.
9 Townsend West
Nashua, NH 03063
USA
PH: +1 866.477.3687

CANADA

FLIR Systems, Ltd.
3430 South Service Road, Suite 103
Burlington, ON L7N 3T9
Canada
PH: +1 800.613.0507

www.flir.com
NASDAQ: FLIR

Equipment described herein is subject to US export regulations and may require a license prior to export. Diversion contrary to US law is prohibited. Imagery for illustration purposes only. Specifications are subject to change without notice. ©2019 FLIR Systems, Inc. All rights reserved. 03/19

18-2963-INS



The World's Sixth Sense®

Service van EURO-INDEX

EURO-INDEX verleent service op alle meetinstrumenten uit haar leveringspakket en biedt de faciliteiten, kennis en hoog gekwalificeerd personeel voor (preventief) onderhoud, reparatie en kalibratie van uw meetinstrumenten.

Geautoriseerd Service Centrum

EURO-INDEX is van alle vertegenwoordigde merken een Geautoriseerd Service Centrum.

Dit betekent dat uw instrumenten worden behandeld door goed opgeleid en kundig personeel, dat beschikt over de juiste gereedschappen en software. Er worden uitsluitend originele onderdelen gebruikt en de garantie van uw instrument, evenals de certificering (ATEX, EN50379, etc.) blijven intact.

Service- en kalibratielaboratorium

EURO-INDEX beschikt over een bijzonder modern service- en kalibratielaboratorium met RvA accreditatie naar NEN-EN-ISO/IEC 17025. Deze accreditatie geldt voor verschillende grootheden, zoals gespecificeerd in de scope bij accreditatienummer K105.



KWS®

KWS is een uniek servicesysteem voor uw meetinstrumenten met periodiek onderhoud en kalibratie. Veel zaken worden voor u geregeld, zodat u zonder zorgen gebruik kunt maken van uw meetinstrumenten. De kosten zijn laag en voorspelbaar.

Digitale toegang tot uw kalibratiecertificaten met Mijn KWS

Via het Mijn KWS webportal heeft u altijd en overal toegang tot uw kalibratiecertificaten en gerelateerde documenten.

Verhuur van meetinstrumenten

- Uitgebreid assortiment
- Deskundig advies
- Instrumenten worden geleverd met accessoirepakket en herleidbaar kalibratiecertificaat

EURO-INDEX Academy

- Producttrainingen (individueel en klassikaal)
- Seminars
- Demonstratie- en instructievideo's

Bekijk de video op ons YouTube kanaal en ontdek alles over KWS



Servicebalie



Kalibratie rookgasanalyse



Seminars en workshops



Kalibratie thermografie

Wijzigingen voorbehouden EURO-INDEX® VL 18001

Het Bluetooth® woord- en beeldmerk zijn eigendom van Bluetooth SIG, Inc. Gebruik van deze merken door EURO-INDEX geschiedt onder licentie.



BELGIË
Leuvensesteenweg 607
1930 Zaventem
T: 02 - 757 92 44
F: 02 - 757 92 64
info@euro-index.be
www.euro-index.be

NEDERLAND
Rivium 2e straat 12
2909 LG Capelle a/d IJssel
T: +31 - (0)10 - 2 888 000
F: +31 - (0)10 - 2 888 010
verkoop@euro-index.nl
www.euro-index.nl

