

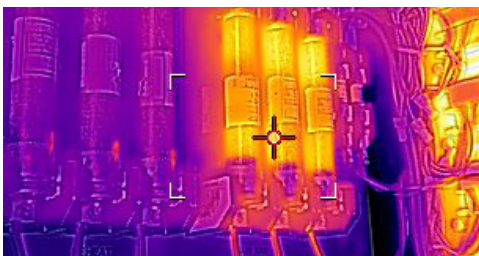


INFRARED CAMERA WITH MSX® & WI-FI

FLIR Ex-Series™

FLIR E4, E5-XT, E6-XT, and E8-XT are powerful, cost-effective, easy-to-use troubleshooting tools for building, electrical, and mechanical applications. With four resolution options—up to 320 × 240 infrared pixels—and the ability to accurately measure temperatures from -20°C to 550°C/-4°F to 1022°F (E6-XT and E8-XT), the Ex-Series has models to fit your target size, working distance, visual detail needs, and budget. All models include MSX® technology for extraordinary thermal imaging detail. Wi-Fi connectivity to smartphones and tablets via the FLIR Tools® Mobile app makes sharing images and sending reports from any location easier, enabling you to make critical decisions faster. With Ex-Series cameras, you can gain the competitive advantage by providing clients with thermal images that clearly reveal the source of electrical, mechanical, and building-related problems.

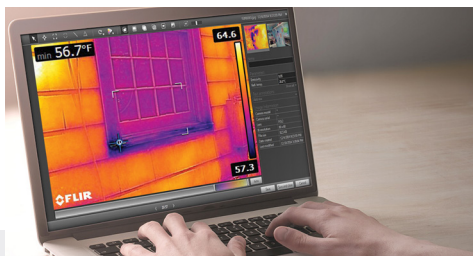
www.flir.com/Ex-Series



EASY TO USE

Intuitive graphic interface simplifies measurements in both thermal and MSX mode

- Fully automatic and focus-free
- Accurately measure your target using center spot or max/min area box
- Navigate easily to on-screen settings, image modes, and measurement tools using simple button controls
- Activate MSX to enhance IR images with visual detail for better perspective and interpretation



CONVENIENT TO SHARE IMAGES AND FINDINGS

Download images, create reports, and share what you've found instantly

- Records standard JPEGs with embedded temperature data for easy sharing with clients
- Wi-Fi connectivity to mobile devices via the FLIR Tools Mobile app
- Rapid Wi-Fi or USB image transfer for documentation
- Image analysis and editing, plus report creation, through FLIR Tools



COMPACT AND RUGGED

Built for portability and safe, efficient use in harsh environments

- Lightweight and well-balanced at just 1.2 lbs (0.575 kg)
- Withstands a 2-meter drop test
- IP54 Enclosure provides a high level of protection against dust and water
- Comes with 2-year warranty coverage on the camera and 10-year coverage for the detector

SPECIFICATIONS

Image and optical data	E4	E5-XT	E6-XT	E8-XT
IR resolution	80 × 60 (4,800 pixels)	160 × 120 (19,200 pixels)	240 × 180 (43,200 pixels)	320 × 240 (76,800 pixels)
Thermal sensitivity/NETD	<0.15°C (0.27°F) / <150 mK	<0.10°C (0.27°F) / <100 mK	<0.06°C (0.11°F) / <60 mK	<0.05°C (0.09°F) / <50 mK
Spatial resolution (IFOV)	10.3 mrad	5.2 mrad	3.4 mrad	2.6 mrad
Field of view (FOV)	45° × 34°			
F-number	1.5			
Image frequency	9 Hz			
Focus	Focus-free			
Detector data				
Detector type	Focal Plane Array (FPA), uncooled microbolometer			
Spectral range	7.5–13 μm			
Image presentation and modes				
Display	3" 320 × 240 color LCD			
Image adjustment	Automatic adjust/lock image			
Image modes	Thermal MSX, thermal, picture-in-picture, thermal blending, digital camera			
Color palettes	Iron, Rainbow, Black & White			
Measurement and analysis				
Object temperature range	-20°C to 250°C (-4°F to 482°F)	-20°C to 400°C (-4°F to 752°F) in two ranges	-20°C to 550°C (-4°F to 1022°F) in two ranges	-20°C to 550°C (-4°F to 1022°F) in two ranges
Accuracy	±2°C (±3.6°F) or ±2% of reading for ambient temperature 10°C to 35°C (50°F to 95°F) and object temperature above 0°C (32°F)			
Spotmeter	Center spot			
Area	Box with max/min			
Isotherm	Above alarm, below alarm			
Data communication and interfaces				
Interfaces	USB Micro: data transfer to and from PC and Mac device			
Wi-Fi	Peer-to-peer or infrastructure			
File format	Standard JPEG, 14-bit measurement data included			
General				
Operating temperature range	-15°C to 50°C (5°F to 122°F)			
Battery	Rechargeable 3.6 V Li ion battery			
Battery operating time	Approx. 4 hours at 25°C (77°F) ambient temperature and typical use			
Battery charging time	2.5 hours to 90% capacity in camera. 2 hours in charger			
Drop	2 m (6.6 ft.)			
Camera weight, incl. battery	0.575 kg (1.27 lb.)			
Camera size (L × W × H)	244 × 95 × 140 mm (9.6 × 3.7 × 5.5 in)			
Box contents	Infrared camera, hard transport case, battery, USB cable, power supply/charger with EU, UK, US and Australian plugs, printed documentation			

Specifications are subject to change without notice. For the most up-to-date specs, go to www.flir.com

CORPORATE HEADQUARTERS

FLIR Systems, Inc.
27700 SW Parkway Ave.
Wilsonville, OR 97070
USA
PH: +1 866.477.3687

LATIN AMERICA

FLIR Systems Brasil
Av. Antonio Bardella, 320
Sorocaba, SP 18085-852
Brasil
PH: +55 15 3238 8070

BOSTON

FLIR Systems, Inc.
9 Townsend West
Nashua, NH 03063
USA
PH: +1 866.477.3687

CANADA

FLIR Systems, Ltd.
3430 South Service Road, Suite 103
Burlington, ON L7N 3T9
Canada
PH: +1 800.613.0507

www.flir.com
NASDAQ: FLIR

Equipment described herein is subject to US export regulations and may require a license prior to export. Diversion contrary to US law is prohibited. Imagery for illustration purposes only. Specifications are subject to change without notice. ©2019 FLIR Systems, Inc. All rights reserved. 03/19

18-2963-INS



The World's Sixth Sense®

Services d'EURO-INDEX

EURO-INDEX est un fabricant, importateur et distributeur de diverses marques A dans le domaine des instruments de test et de mesure. Nous fournissons également une large gamme de services pour optimiser l'utilisation de ces instruments dans vos activités. Ces services comprennent naturellement l'entretien, la réparation et l'étalonnage des instruments, mais nous proposons aussi une assistance sous forme de formation via notre EURO-INDEX Academy et la location d'instruments.

Centre de Service Agréé

EURO-INDEX est un Centre de Service Agréé pour toutes les marques représentées. Cela signifie que vos instruments sont pris en charge par des techniciens formés par le fabricant et disposant des outils et logiciels adéquats. Seules des pièces d'origine sont utilisées et la garantie de votre instrument, ainsi que les certifications (ATEX, EN50379, etc.) restent intactes.

Laboratoire de maintenance et de calibrage

Le laboratoire des Pays-Bas est accrédité RvA selon la norme EN-ISO/IEC 17025. Cette accréditation est valable pour différentes grandeurs, telles que spécifiées dans le champ d'application associé au numéro d'accréditation K105. Les certificats de calibrage RvA sont acceptés à l'international et équivalents à ceux de BELAC.



Service Mobile

Outre les laboratoires d'étalonnage fixes de Zaventem et de Capelle aan den IJssel, nous disposons également d'un laboratoire itinérant appelé "Service mobile". Nos services peuvent venir vers vous, en offrant une qualité équivalente.

MQS®

MQS® est une formule d'entretien exclusive comportant un entretien et un calibrage périodiques de vos instruments de mesure à un coût fixe et faible. Via un portail Web gratuit (monmq.be), vous avez toujours accès à vos certificats de calibrage.

Location d'instruments de mesure

- Vaste assortiment
- Précision démontrable par le certificat d'étalonnage actuel
- Conseils avisés
- Les instruments sont livrés avec leurs accessoires

EURO-INDEX Academy

- Formations et séminaires
- Vidéos de démonstration et d'instruction
- Notes d'application



Comptoir de service



Entretien, réparation et calibrage



Formations et séminaires



Service Mobile

Sous réserve de modifications EURO-INDEX® FR 23001



BELGIQUE
Chaussée de Louvain 607
1930 Zaventem
T: 02 - 757 92 44
F: 02 - 757 92 64
sales@euro-index.be
www.euro-index.be

PAYS-BAS
Rivium 2e straat 12
2909 LG Capelle a/d IJssel
T: +31 - (0)10 - 2 888 000
F: +31 - (0)10 - 2 888 010
verkoop@euro-index.nl
www.euro-index.nl

