

Detecting electrical unbalance and overloads

Application Note

Thermal images are an easy way to identify apparent temperature differences in industrial three-phase electrical circuits, compared to their normal operating conditions.

By inspecting the thermal gradients of all three phases side-by-side, technicians can quickly spot performance anomalies on individual legs due to unbalance or overloading.

Electrical unbalance can be caused by several different sources: a power delivery problem, low voltage on one leg, or an insulation resistance breakdown inside the motor windings.

Even a small voltage unbalance can cause connections to deteriorate, reducing the amount of voltage supplied, while motors and other loads will draw excessive current, deliver lower torque (with associated mechanical stress), and fail sooner. A severe unbalance can blow a fuse, reducing operations down to a single phase. Meanwhile, the unbalanced current will return on the neutral, causing the utility to fine the facility for peak power usage.

In practice, it is virtually impossible to perfectly balance the voltages across three phases. To help equipment operators determine acceptable levels of

unbalance, the National Electrical Manufacturers Association (NEMA) has drafted specifications for multiple devices. These baselines are a useful point of comparison during maintenance and troubleshooting.

What to check?

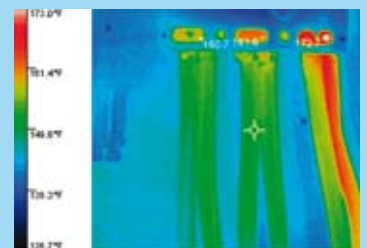
Capture thermal images of all electrical panels and other high-load connection points such as drives, disconnects, controls and so on. Where you discover higher temperatures, follow that circuit and examine associated branches and loads.

Check panels and other connections with the covers off. Ideally, you should check electrical devices when they are fully warmed up and at steady state conditions with at least 40 % of the typical load. That way, measurements can be properly evaluated and compared to normal operating conditions.

What to look for?

Equal load should equate to equal temperatures. In an unbalanced load situation, the more heavily loaded phase(s) will appear warmer than the others, due to the heat generated by resistance. However, an unbalanced load, an overload, a bad connection, and a harmonic imbalance can all create a similar pattern. Measuring the electrical load is required to diagnose the problem.

Note: A cooler-than-normal circuit or leg might signal a failed component.



The connections on this evaporator pump read over 50 degrees hotter on phase C.



Caution:

Only authorized and qualified personnel using the appropriate personal protective equipment (PPE) should remove electrical panel covers.

It is sound procedure to create a regular inspection route that includes all key electrical connections. Using the software that comes with the thermal imager, save each image you capture on a computer and track your measurements over time. That way, you'll have baseline images to compare to later

images. This procedure will help you determine whether a hot or cool spot is unusual. Following corrective action, new images will help you determine if repairs were successful.

What represents a "red alert?"

Repairs should be prioritized by safety first—i.e., equipment conditions that pose a safety risk—followed by criticality of the equipment and the extent of the temperature rise.

NETA (InterNational Electrical Testing Association) guidelines dictate immediate action when the difference in temperature (ΔT) between similar electrical components under similar loading exceeds 15 °C or when the ΔT between an electrical component and the ambient air temperatures exceeds 40 °C.

NEMA standards (NEMA MG1-12.45) warn against operating any motor at a voltage unbalance exceeding one percent. In fact, NEMA recommends that motors be de-rated if operating at a higher unbalance. Safe unbalance percentages vary for other equipment.

What's the potential cost of failure?

Motor failure is a common result of voltage unbalance. Total cost combines the cost of a motor, the labor required to change out a motor, the cost of product discarded due to uneven production, line operation and the

revenue lost during the time a line is down.

Assume the cost to replace a 50 hp motor each year is €5,000 including labor. Assume 4 hours of downtime per year with income loss of €6,000 per hour. **Total Cost: €5,000 + (4 x €6,000) = €29,000 annually**

Follow-up actions

When a thermal image shows an entire conductor is warmer than other components throughout part of a circuit, the conductor could be undersized or overloaded. Check the conductor rating and the actual load to determine which is the case.

Use a multimeter with a clamp, a clamp meter or a power quality analyzer to check current balance and loading on each phase.

On the voltage side, check the protection and switchgear for voltage drops. In general, line voltage should be within 10 % of the nameplate rating. Neutral to ground voltage tells you how heavily your system is loaded and helps you track harmonic current. Neutral to ground voltage higher than 3 % should trigger further investigation.

Loads do change, and a phase can suddenly be 5 percent lower on one leg, if a significantly large single-phase load comes online. Voltage drops across the fuses and switches can also show up as unbalance at the motor and excess heat at the root trouble spot. Before you assume the cause has been found, double check

with both the thermal imager and multi-meter or clamp meter current measurements. Neither feeder nor branch circuits should be loaded to the maximum allowable limit. Circuit load equations should also allow for harmonics. The most common solution to overloading is to redistribute loads among the circuits, or to manage when loads come on during the process. Using the associated software, each suspected problem uncovered with a thermal imager can be documented in a report that includes a thermal image and a digital image of the equipment. That's the best way to communicate problems and to suggest repairs.

Fluke. *Keeping your world up and running.*

Fluke Corporation
P.O. Box 9090
Everett, WA USA 98206

Fluke Europe B.V.
P.O. Box 1186
5602 BD Eindhoven
The Netherlands

For more information call:
In the U.S.A. (800) 443-5853
or Fax (425) 446-5116
In Europe/M-East/Africa +31 (0)40 2 675 200
or Fax +31 (0)40 2 675 222
In Canada (905) 890-7600
or Fax (905) 890-6866
From other countries +1 (425) 446-5500
or Fax +1 (425) 446-5116

Visit us on the world wide web at:
www.fluke.com

Fluke (UK) Ltd.
52 Hurricane Way
Norwich
Norfolk
NR6 6JB
United Kingdom
Tel.: (020) 7942 0700
Fax: (020) 7942 0701
E-mail: industrial@uk.fluke.nl

Visit us on the world wide web at:
www.fluke.co.uk

© Copyright 2005, Fluke Corporation.
All rights reserved.
Printed in the Netherlands 09/05
Data subject to alteration without notice.
Pub_ID: 10984-eng

An imaging tip

The primary use of thermography is locating electrical and mechanical anomalies. Despite a popular perception to the contrary, a device's temperature—even its relative temperature—may not always be the best indicator of how close it is to failure. Many other factors should be considered, including changes in ambient temperatures and mechanical or electrical loads, visual indications, the criticality of components, histories of similar components, indications from other tests, etc. What all of this indicates is that thermography serves best as part of a comprehensive condition monitoring and predictive maintenance program.



Leuvensteenweg 607
1930 Zaventem
T: 02 - 757 92 44
F: 02 - 757 92 64
sales@euro-index.be
www.euro-index.be