

# PROFESSIONAL MEASUREMENT TECHNOLOGY

OVER 65 YEARS OF MEASURING AND TESTING INSTRUMENTS





# DIRECTORY FOR SPECIALISTS

- 
- 04 TESTBOY**  
The Testboy company philosophy
- 
- 07 GENERAL INFORMATION**  
Safety information
- 
- 08 CONTINUITY TESTER**  
Testboy 20 Plus
- 
- 10 VOLTAGE TESTERS**  
Testboy 10, 11, 111, 110, 113, 114, 115 Bit, 105, 40 plus
- 
- 16 MAGNETIC FIELD TESTERS**  
Testboy 15, 130
- 
- 18 TWO-POLE VOLTAGE TESTERS**  
Testboy 41 LED, 41 LED plus, 41 DUO, Profi III LED, Profi III LCD
- 
- 22 MULTIMETERS**  
Testboy 312, 313, 2200, 3000, Pocket 100
- 
- 28 CURRENT MEASUREMENT CLAMPS**  
Testboy TV 216 N, TV 218, TV 225
- 
- 32 SOCKET OUTLET TESTERS**  
Testavit Schuki 1 LCD, 3 LCD, 1 A, 3 A, 2 K
- 
- 36 CABLE DETECTORS, MAINS WIRING TESTERS,  
FUSE LOCATORS AND WALL SCANNERS**  
Testboy 26, 27 Analog, 27 Digital, 28, 30, TV 700
- 
- 43 ADAPTERS AND ROTATING FIELD TESTERS**  
Testboy TV 416/432, TV 416/432 (A), TV 410 N, TV 411
- 
- 47 INSTALLATION AND DEVICE TESTERS**  
Testboy TV 431, TV 441, TV 445, TV 455, TV 465, TV 470
- 
- 54 THERMOMETERS**  
Testboy TV 323, TV 325
- 
- 57 LUXMETERS, RANGE FINDERS AND WORKING LIGHTS**  
Testboy TV 333, TV 335, TV 610, Light 500
- 
- 62 MOULD DETECTORS, HYGROMETERS AND ANEMOMETERS**  
Testboy TV 328, TV 341, 350
- 
- 66 VEHICLE MEASURING INSTRUMENTS**  
Testboy 50, 55, 65, 70, 72, 74, 75, Car Tester
- 
- 76 THERMOGRAPHY**  
Testboy TV 292, TV 294 Digital, TV 295 Touch
- 
- 84 ACCESSORIES**  
Discover the matching accessories



**Testboy**<sup>®</sup>  
GmbH, Germany  
Stands For Quality  
Since 1953

# OUR COMPANY

# TESTBOY QUALITY



## PROFESSIONAL MEASURING AND TESTING INSTRUMENTS – A SUCCESS STORY SINCE 1953

In the early days of the new West German Republic, an ingenious inventor had an idea which was to revolutionise measurement technology in the electrical branch.

The electrician Ludwig Mers developed a continuity tester and called it Testboy. Little did he know that the name was to develop into a synonym for measurement technology.

This was the start of a successful family-led company which continues today. Our current product pallet is the result of a pioneering spirit combined with a flair for knowing what the market needs in terms of measuring and testing instruments.

Faithful to our motto "From the practice for the practice" and working to ensure the continual development of our range, Testboy GmbH has advanced to its current status as an international market leader. Our success is grounded in maximising safety through the provision of quality. We promise to continue this approach. We will work day and night both to maintain and extend the service and delivery capacity to which you have become accustomed. Our highly-trained and motivated specialist personnel will do everything possible to keep up with and satisfy the ever-changing needs of trade, industry and research.

We should like to extend our thanks for the trust which you have invested in us over the course of the last 65 years and the future.

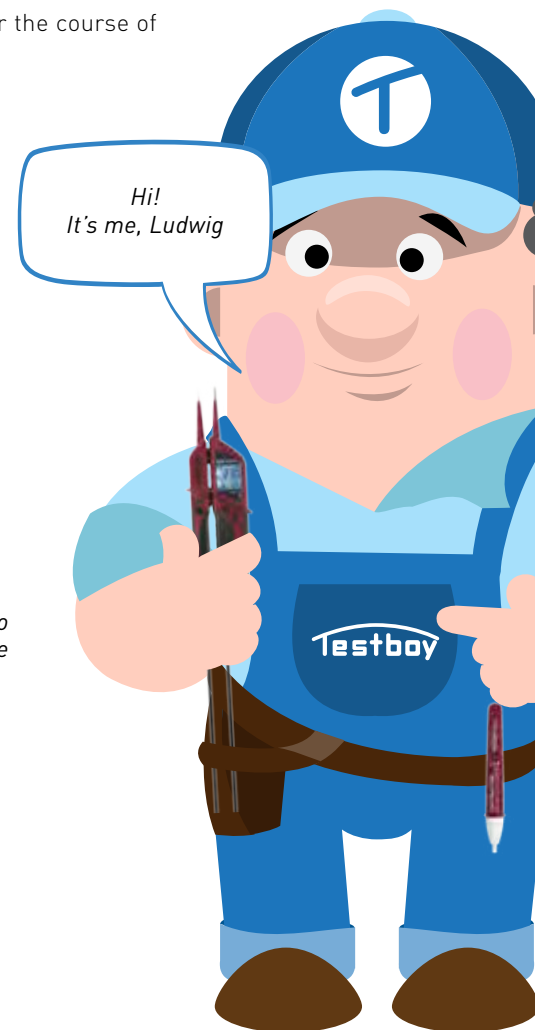
**Best wishes from Vechta**

**Your Testboy team**

# HELLO LUDWIG

*Hi, my name is Ludwig, I will accompany you through this catalogue. I hope to be able to provide assistance with a number of decisions. Should you have any questions, just give the people at Testboy a call - they are more than happy to help.*

*Now, lick your finger and page through...*



# TESTBOY HISTORY

- // 1953 Establishment of Ludwig Mers as an electrical installation company
- // 1960 Ludwig Mers GmbH & Co. KG Elektrotechnische Spezialfabrik
- // 1993 Takeover of Ludwig Mers GmbH & Co. KG by the current managing director Horst Reysen
- // 1997 Construction of the new company building
- // 2000 Expansion of the warehouse in Vechta
- // 2005 Change of the company name to Testboy GmbH
- // 2005 Construction of an office and warehouse building in Vechta
- // 2008 Expansion of the production facilities and warehouse in Vechta
- // 2013 Celebration of the 60th anniversary of the company; extension of the warehouse and offices



The use of cutting-edge manufacturing technologies has enabled Testboy GmbH to develop into one of the leading manufacturers for robust and professional measuring and testing instruments. Our TÜV-/GS tested, user-friendly and long service life products are internationally known under the brand names "Testboy", "Testavit" and "Schuki". Seeking to keep our customers happy, we subject our product range to continual improvement, taking into account the applicable standards and laws. We place especial value on the clever combination of as many functions as possible in a single instrument.

## QUALITY AND SERVICE IS TOP PRIORITY AT TESTBOY!

### TESTBOY GMBH ELEKTROTECHNISCHE SPEZIAL- FABRIK

Beim Alten Flugplatz 3  
D-49377 Vechta · Germany  
Tel. +49 (0) 4441 89112-10  
Fax +49 (0) 4441 84536  
[www.testboy.de](http://www.testboy.de)

### CUSTOMER SERVICES

Tel. +49 (0) 4441 89112-10  
Fax +49 (0) 4441 84536  
[sales@testboy.de](mailto:sales@testboy.de)

### TECHNICAL HOTLINE

Tel. +49 (0) 4441 89112-90  
Fax +49 (0) 4441 89112-27  
[support@testboy.de](mailto:support@testboy.de)

### ACCOUNTING

Tel. +49 (0) 4441 89112-13  
Fax +49 (0) 4441 89112-22  
[accounting@testboy.de](mailto:accounting@testboy.de)

### QUALITY CONTROL

Tel. +49 (0) 4441 89112-20  
Fax +49 (0) 4441 84536  
[qc@testboy.de](mailto:qc@testboy.de)



# TESTBOY

## SAFETY

### GENERAL INFORMATION AND SAFETY INFORMATION

Today, measuring and testing instruments are essential tools when performing construction, repair and maintenance work on electronic instruments and installations. Modern test instruments must enable the user to perform safety checks, troubleshooting and function tests quickly, safely and reliably. Internationally valid safety standards for the safety of electrical measuring and control equipment are drawn up and ratified by the IEC (International Electrotechnical Commission). This guarantees that tests are performed in accordance with the same criteria and guidelines all over the world.

#### Testing and measuring instruments are tested as follows:

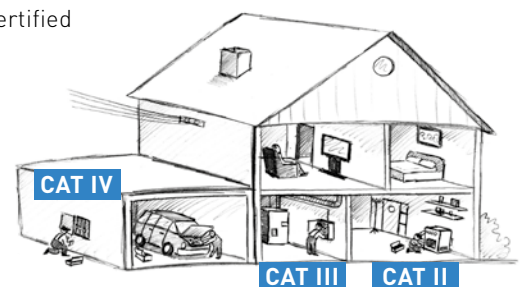
- CAT II 600 V** | 4000 V Peak surge voltage 12 Ohm source
- CAT II 1000 V** | 6000 V Peak surge voltage 12 Ohm source
- CAT III 600 V** | 6000 V Peak surge voltage 2 Ohm source
- CAT III 1000 V** | 8000 V Peak surge voltage 2 Ohm source
- CAT IV 600 V** | 8000 V Peak surge voltage 2 Ohm source
- CAT IV 1000 V** | 12000 V Peak surge voltage 2 Ohm source

Measuring instruments are classed in accordance with 3 different categories that indicate the ranges for which they are approved:

- CAT II** Electrical circuits connected directly to the mains  
 Sockets and long branch lines  
 All sockets more than 10 m away from CAT III  
 All sockets more than 20 m away from CAT IV
- CAT III** In building installations, e.g. distributors, cabling, sockets  
 Short lines  
 Distributor boards  
 Sockets for large loads with short lines for supplying electrical energy  
 Lighting systems for large buildings  
 Busbars
- CAT IV** At the source of the low voltage installation, e.g. electricity meters, main terminal, primary over current protective devices  
 In the open and supply cable feed  
 Supply cables from the connection point to the building  
 Connection between the measuring instrument and the connection point  
 Overhead lines to individual buildings  
 Underground cables to water pumps  
 Supplies



In order to document that the products of a manufacturer comply with IEC/EN 61010-1, the manufacturer can have these products tested by an accredited test body to check whether they conform to the requirements laid out in the standard. Once a test has been passed, the manufacturer is entitled to attach the corresponding quality certificate to its product. As a safety-conscious and responsible manufacturer, all Testboy products are certified by TÜV-SÜD Produkt Service GmbH.





# OUR CONTINUITY TESTERS



# TESTBOY 20 PLUS

CONTINUITY TESTER WITH EXTERNAL  
VOLTAGE PROTECTION



## THE SPECIFICATIONS

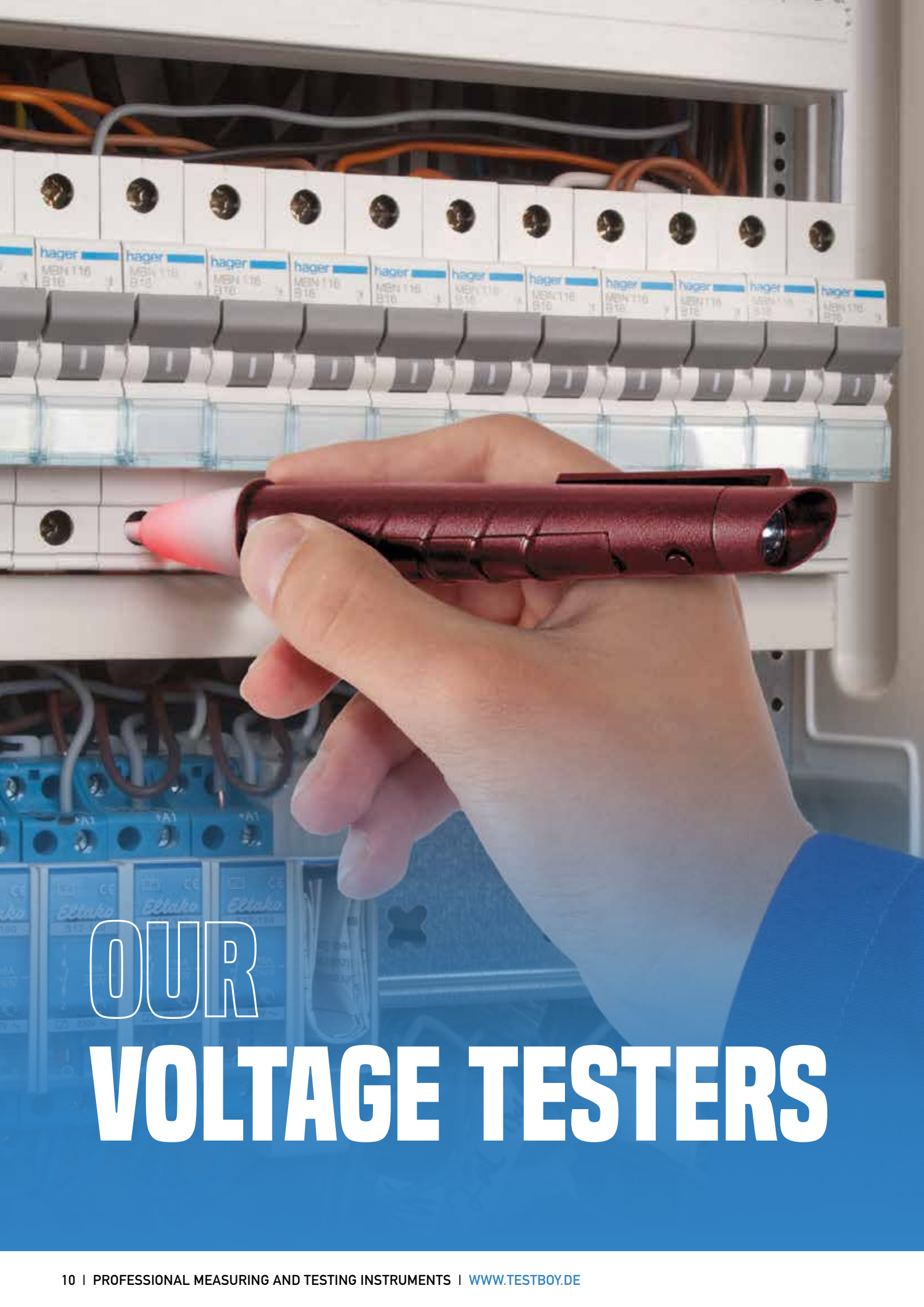
|                             | TESTBOY 20 PLUS                       |
|-----------------------------|---------------------------------------|
| CONTINUITY TESTING          | Optical 0–20 Ω<br>Acoustic 0–250 Ω    |
| TEST VOLTAGE                | 4.5 V                                 |
| TEST CURRENT                | Optical ~10 mA<br>Acoustic ~2 mA      |
| EXTERNAL VOLTAGE PROTECTION | Up to 300 V                           |
| OVER-VOLTAGE CATEGORY       | CAT II 300 V                          |
| INTEGRATED LED TORCH        | Yes                                   |
| STANDARD                    | EN 61010-1:2010                       |
| DIMENSIONS                  | 120 x 60 x 30 mm                      |
| WEIGHT                      | 90 g (without battery)                |
| VOLTAGE SUPPLY              | 3 x 1.5 V                             |
| SCOPE OF DELIVERY           | 2 test leads                          |
| ACCESSORIES (OPTIONAL)      | inc. crocodile clips<br>Carrying case |

## YOUR BENEFITS

- // Reliable continuity tester
- // Non-contact voltage sensor
- // High-performance LED torch

The Testboy 2 was the top-selling continuity tester in Germany. The Testboy 20 Plus represents its systematic development.

Its non-contact voltage sensor enables it to detect AC voltages through insulation. Defective lamps in Christmas lights or similar constructions are located accurately within seconds. The installed current warmer alerts users to the presence of life-threatening voltage. The electronics also enable a single-pole phase search.



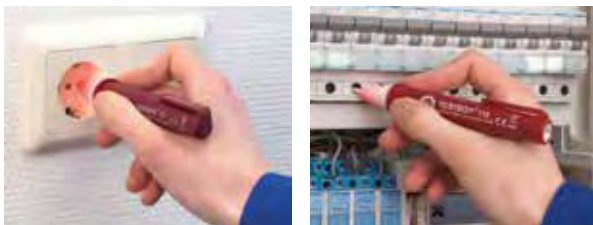
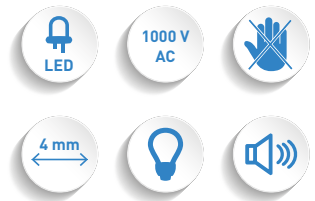
OUR

# VOLTAGE TESTERS

# TESTBOY

## 10, 11, 111

### NON-CONTACT VOLTAGE TESTERS



#### THE SPECIFICATIONS

|                           | TESTBOY 10                         | TESTBOY 11         | TESTBOY 111        |
|---------------------------|------------------------------------|--------------------|--------------------|
| DISPLAY                   | Optical                            | Optical + acoustic | Optical + acoustic |
| MEASUREMENT RANGE         | 110-1000 V AC                      |                    |                    |
| OVER-VOLTAGE CATEGORY     | CAT III 1000 V / CAT IV 600 V      |                    |                    |
| INTEGRATED LED FLASHLIGHT | No                                 | No                 | Yes                |
| STANDARD                  | EN 61010-1:2010                    |                    |                    |
| HOUSING                   | Impact and break-proof ABS plastic |                    |                    |
| DIMENSIONS                | 146 x 26 mm                        | 146 x 26 mm        | 160 x 25 mm        |
| WEIGHT                    | 22 g                               | 22 g               | 45 g               |
| VOLTAGE SUPPLY            | 2 x 1.5 V AAA Micro, LR03          |                    |                    |

## YOUR BENEFITS

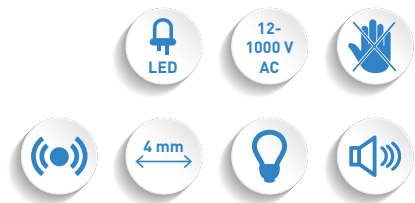
- // Capacitive measurement procedure
- // Alarm signal (Testboy 11, 111)
- // LED flashlight (Testboy 111)
- // CAT III 1000 V / CAT IV 600 V

The Testboy 10, 11 and 111 non-contact voltage testers detect live conductors on cable connections, cable drums, sockets, switches, junction boxes etc. A capacitive measurement procedure obviates the need for a current flow; interruptions can be indicated quickly to the nearest centimetre.

# TESTBOY

## 110, 113, 114

NON-CONTACT VOLTAGE TESTERS FROM  
12 V AC



PRODUCT VIDEO:  
[WWW.TESTBOY.DE](http://WWW.TESTBOY.DE)



### THE SPECIFICATIONS

|                           | TESTBOY 110                        | TESTBOY 113        | TESTBOY 114         |
|---------------------------|------------------------------------|--------------------|---------------------|
| DISPLAY                   | Optical                            | Optical + acoustic | Optical + vibrating |
| MEASUREMENT RANGE         | 12-1000 V AC                       |                    |                     |
| OVER-VOLTAGE CATEGORY     | CAT III 1000 V / CAT IV 600 V      |                    |                     |
| INTEGRATED LED FLASHLIGHT | Yes                                |                    |                     |
| STANDARD                  | EN 61010-1:2010                    |                    |                     |
| HOUSING                   | Impact and break-proof ABS plastic |                    |                     |
| DIMENSIONS                | 160 x 25 mm                        |                    |                     |
| WEIGHT                    | 45 g                               |                    |                     |
| VOLTAGE SUPPLY            | 2 x 1.5 V AAA Micro, LR03          |                    |                     |

## YOUR BENEFITS

- // Capacitive measurement procedure
- // Measurements from 12 V
- // LED flashlight
- // Vibrating indication (Testboy 114)

As the systematic development of the familiar voltage tester, the Testboy 110, 113 and 114 non-contact voltage testers detect a live conductor from 12 V AC, even in low volt systems. The capacitive measurement procedure used means that invisible fractures in extension cables or a defective lamp in a chain of lights can be detected to the nearest centimetre within a few seconds.

# TESTBOY

## 115 BIT



**Testboy**  
GmbH, Germany  
Stands For Quality  
Since 1953

A NON-CONTACT VOLTAGE TESTER FROM  
12V AC WITH INTEGRATED BIT RECEIVER



### THE SPECIFICATIONS

|                       | TESTBOY 115 BIT                          |
|-----------------------|--|
| DISPLAY               | Optical                                  |
| VOLTAGE RANGE         | 12-1000 V AC                             |
| OVER-VOLTAGE CATEGORY | CAT III 1000 V / CAT IV 600 V            |
| STANDARD              | IEC/EN 61010-1                           |
| HOUSING               | Fibre-glass reinforced plastic housing   |
| DIMENSIONS            | 150 x 25 mm                              |
| WEIGHT                | 45 g                                     |
| VOLTAGE SUPPLY        | 2 x 1.5 V AAA Micro, LR03                |
| SCOPE OF DELIVERY     | Bag and 2 bits<br>(Phillips and slotted) |

## YOUR BENEFITS

- // Practical bit socket
- // Measurements from 12 V AC
- // Capacitive measurement procedure

The innovative Testboy 115 Bit non-contact voltage tester detects live conductors from 12 V AC up to 1000 V AC, even in low voltage systems. Cable breaks in extension cables, defective lamps, light chains or defective fuses are located without any power flow within seconds and to the nearest centimetre using the capacitive measurement procedure. An optical display conveys the voltage indication: a red LED with voltage indication from 110 V – 1000 V AC; a blue LED if the 12V mode is activated; a purple LED with a voltage indication of 12 V – 1000 V AC. The Testboy 115 Bit recognizes phase conductors in single phase and three-phase networks. A bit socket performs a screwdriver function.

# TESTBOY

## 105

NON-CONTACT VOLTAGE TESTER WITH  
SAFETY LEVEL CAT IV 1000 V



*It can do everything. A small instrument with safety level CAT IV 1000 V! The vibration enables you to feel the voltage.*



### THE SPECIFICATIONS

|                           | TESTBOY 105                        |
|---------------------------|------------------------------------|
| DISPLAY                   | Optical, acoustic, vibrating       |
| MEASUREMENT RANGE         | 12-1000 V AC                       |
| OVER-VOLTAGE CATEGORY     | CAT IV 1000 V                      |
| INTEGRATED LED FLASHLIGHT | Yes                                |
| STANDARD                  | IEC/EN 61010-1 (DIN VDE 0411)      |
| HOUSING                   | Impact and break-proof ABS plastic |
| DIMENSIONS                | 160 x 25 mm                        |
| WEIGHT                    | 45 g                               |
| POWER SUPPLY              | 2 x 1.5 V AAA Micro                |



## YOUR BENEFITS

- // Capacitive measurement procedure
- // Optical, acoustic and vibrating indication
- // Measurements from 12 V AC
- // LED flashlight
- // CAT IV 1000 V
- // IEC/EN 61010-1 (DIN VDE 0411)

A further non-contact voltage tester is the Testboy 105. This detects live conductors from 12 V AC to 1000 V in CAT IV. The optical, acoustic and vibrating indication makes it especially easy and reliable to use. The capacitive measurement procedure enables detection of invisible interruptions in cables in a few seconds within only a few millimetres tolerance.

# TESTBOY 40 PLUS

VOLTAGE TESTER

6-400 V  
AC/DC



## THE SPECIFICATIONS

|                        | TESTBOY 40 PLUS        |
|------------------------|------------------------|
| INDICATION             | Optical, 8 LEDs        |
| VOLTAGE RANGE          | 6-400 V AC/DC          |
| OVER-VOLTAGE CATEGORY  | CAT III 400 V          |
| POLARITY               | Yes (+, - LED)         |
| PROTECTION CLASS       | IP 65                  |
| DIMENSIONS             | 120 x 60 x 30 mm       |
| WEIGHT                 | 100 g                  |
| VOLTAGE SUPPLY         | via measurement object |
| ACCESSORIES (OPTIONAL) | Carrying case          |

## YOUR BENEFITS

- // Voltage range up to 400 V AC/DC
- // Phase search to the protective earth conductor
- // Voltage supply via the measurement object
- // easy handling

Robust and user-friendly, the ergonomic structure of the Testboy 40 Plus makes for easy handling and operation and guarantees a long service life. The voltage tester reliably indicates DC and AC voltages from 6 to 400 V. Moreover, the electronics enable phase search to the protective earth conductor.



# OUR MAGNETIC FIELD TESTERS

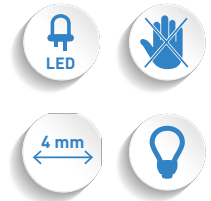


# TESTBOY

# 15, 130

NON-CONTACT MAGNETIC  
FIELD TESTERS

**Testboy**  
GmbH, Germany  
Stands For Quality  
Since 1953



## THE SPECIFICATIONS

|                           | TESTBOY 15                     | TESTBOY 130 |
|---------------------------|--------------------------------|-------------|
| INDICATION                | Optical, LED                   |             |
| MEASUREMENT RANGE         | All magnetic fields            |             |
| INTEGRATED LED FLASHLIGHT | No                             | Yes         |
| STANDARD                  | EN 61010-1:2010                |             |
| DIMENSIONS                | 142 x 26 mm                    | 160 x 25 mm |
| WEIGHT                    | 22 g                           | 45 g        |
| VOLTAGE SUPPLY            | 2 x 1.5 V type AAA Micro, LR03 |             |
| COLOUR                    | Black                          |             |

## YOUR BENEFITS

- // Non-contact testing of all magnetic fields
- // High-performance LED flashlight (Testboy 130)

The Testboy 15 and Testboy 130 magnetic field testers are suited to the rapid and precise testing of electro-magnetic switches and valves. Their tip lights up to indicate the presence of permanent, DC or AC magnetic fields. The level of sensitivity which they provide means that it is often not necessary to dismantle machine covers or cladding. This means that the function test can be carried out without the need for any setting-up time to stop the machine.



# TWO-POLE VOLTAGE TESTER

TWO-POLE VOLTAGE TESTER WITH  
SAFETY LEVEL CAT IV 1000 V



## THE SPECIFICATIONS

|                                 | TESTBOY 41 LED                | TESTBOY 41 LED PLUS | TESTBOY 41 DUO       |
|---------------------------------|-------------------------------|---------------------|----------------------|
| INDICATION                      | Optical, LED                  | Optical, LED        | Optical, LED and LCD |
| TEST RANGE SELECTION            | Automatic                     | Automatic           | Automatic            |
| VOLTAGE RANGE                   | 6–1000 V AC/DC                | 6–1000 V AC/DC      | 6–1000 V AC/DC T-RMS |
| TWO-POLE PHASE SEQUENCE TESTING | -                             | Yes                 | -                    |
| RCD TESTING                     | -                             | Yes                 | -                    |
| POLARITY                        | Yes (LED)                     | Yes (LED)           | Yes (LCD)            |
| OVER-VOLTAGE CATEGORY           | CAT III 1000 V / CAT IV 600 V |                     |                      |
| CONTINUITY TESTING              | 0–200 kΩ with acoustic signal |                     |                      |
| SINGLE-POLE PHASE TESTING       | Yes                           |                     |                      |
| PELV INDICATION                 | Optical and vibrating         |                     |                      |
| AUTO POWER-OFF                  | Yes                           |                     |                      |
| 4 MM PROBE ADAPTER              | Removable                     |                     |                      |
| PROTECTION CLASS                | IP 65                         |                     |                      |
| STANDARD                        | EN 61243-3:2014               |                     |                      |
| WEIGHT                          | 250 g                         |                     |                      |
| VOLTAGE SUPPLY                  | 2 x 1.5 V AAA                 |                     |                      |
| ACCESSORIES (OPTIONAL)          | Carrying case                 |                     |                      |

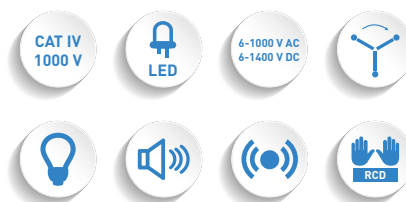
## YOUR BENEFITS

- // Overvoltage category CAT III 1000 V / CAT IV 600 V
- // Voltage indication up to 1000 V AC/DC
- // Continuity testing
- // T-RMS testing procedure for non-sinusoidal voltage e.g. in an industrial application (model TB 41 DUO)

The user-friendly structure of the Testboy 41 series - with its well thought out, tried-and-tested single-hand use and a durable housing - guarantees a long operational life and convinces all who use it. The two-pole voltage tester reliably indicates DC and AC voltages in the range from 6 to 1000 V. The electronics enables phase search to the protective earth conductor. The Testboy 41 LED Plus also permits phase sequence testing and FI-/RCD testing. The double indication on the Testboy 41 DUO means that LED meets LCD.

# TESTBOY PROFI III LED

TWO-POLE VOLTAGE TESTER AT THE HIGHEST SAFETY LEVEL CAT IV IN ACCORDANCE WITH THE LATEST STANDARDS



## THE SPECIFICATIONS

|                                 | TESTBOY PROFII III LED   |
|---------------------------------|--|
| INDICATION                      | Optical, LEDs  |
| TEST RANGE SELECTION            | Automatic  |
| VOLTAGE RANGE                   | 6–1000 V AC / 6–1400 V DC  |
| OVER-VOLTAGE CATEGORY           | CAT IV 1000 V  |
| CONTINUITY TESTING              | 0–200 kΩ optical/acoustic  |
| PHASE INDICATOR                 | > 100 V AC   |
| SINGLE-POLE PHASE TESTING       | Yes  |
| TWO-POLE PHASE SEQUENCE TESTING | Yes  |
| FI-/RCD TESTING                 | 30 mA at 230 V AC using two buttons  |
| POLARITY                        | Yes (+,- LED)  |
| PELV INDICATION                 | Optical and vibrating  |
| TEST LOCATION LIGHTING          | White LED  |
| AUTO POWER-OFF                  | Yes  |
| 4 MM PROBE ADAPTER              | Removable  |
| PROTECTION CLASS                | IP 65  |
| STANDARD                        | EN 61243-3:2014  |
| DIMENSIONS                      | 300 x 75 x 20 mm   |
| WEIGHT                          | 270 g  |
| VOLTAGE SUPPLY                  | 2 x 1.5 V AAA (information about contact-hazardous voltage even without batteries) |
| ACCESSORIES (OPTIONAL)          | Carrying case  |

## YOUR BENEFITS

- // Highest safety level CAT IV 1000 V
- // Practical one-hand operation
- // Robust, safe structure
- // Testing without finger contact

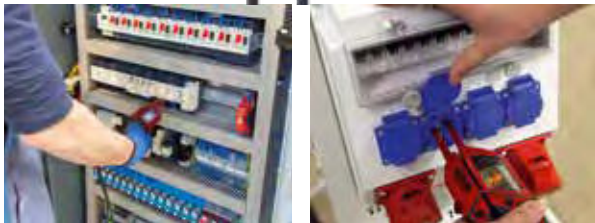
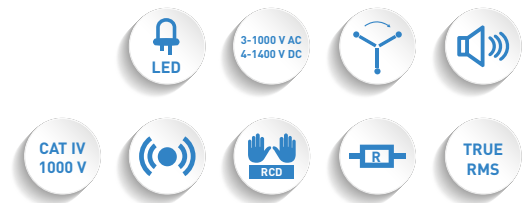
The Testboy Profi III LED represents the systematic development of our popular Testboy Profi LED Plus. It convinces due to its user-friendly handling, stable and safe structure and conforms to all requirements placed on modern voltage testers by a specialist. Its highest safety level (CAT IV 1000 V) makes it suitable for measurements on hybrid and electric vehicles, as well as photovoltaic installations. Voltage testing is possible even up to 1400 V DC. Voltage recognition is performed both optically and with a vibration. The safety level CAT IV 1000 V is almost unique for a voltage tester.

# TESTBOY

## PROFI III LCD



TWO-POLE VOLTAGE TESTER AT THE HIGHEST SAFETY LEVEL CAT IV IN ACCORDANCE WITH THE LATEST STANDARDS.



### THE SPECIFICATIONS

|                                 | TESTBOY PROFI III LCD  |
|---------------------------------|--|
| INDICATION                      | Optical, LED   |
| TEST RANGE SELECTION            | Automatic  |
| VOLTAGE RANGE                   | 3–1000 V AC (T-RMS/RMS)<br>4–1400 V DC   |
| OVER-VOLTAGE CATEGORY           | CAT IV 1000 V  |
| RESISTANCE TESTING              | 10–199.9 kΩ  |
| CONTINUITY TESTING              | 0–10 kΩ with acoustic signal   |
| FREQUENCY INDICATION            | 0–500 Hz   |
| SINGLE-POLE PHASE TESTING       | Yes  |
| TWO-POLE PHASE SEQUENCE TESTING | Yes, at > 200 V AC   |
| FI-/RCD TESTING                 | 30 mA at 230 V AC using two buttons  |
| POLARITY                        | Yes (- in the LCD)   |
| PELV INDICATION                 | Optical and vibrating  |
| TEST LOCATION LIGHTING          | White LED  |
| DATA-HOLD FUNCTION              | Voltage and resistance   |
| AUTO POWER-OFF                  | Yes  |
| 4 MM PROBE ADAPTER              | Removable  |
| PROTECTION CLASS                | IP 65  |
| STANDARD                        | EN 61243-3:2014  |
| DIMENSIONS                      | 300 x 75 x 20 mm   |
| WEIGHT                          | 270 g  |
| VOLTAGE SUPPLY                  | 2 x 1.5 V AAA (information about contact-hazardous voltage even without batteries) |
| ACCESSORIES (OPTIONAL)          | Carrying case  |

## YOUR BENEFITS

- // Highest safety level CAT IV 1000 V
- // Large, illuminated LCD
- // Voltage indication up to 1000 V AC and 1400 V DC
- // Resistance testing 10 to 199.9 kΩ
- // Frequency display up to 500 Hz
- // T-RMS testing procedure for non-sinus voltage e.g. in an industrial application

The Testboy Profi III LCD is the top model of our tried-and-tested Profi series. No conventionally-available two-pole voltage tester has so many comparable functions. The innovative two-pole voltage tester convinces with a wide performance spectrum and practical one-hand operation. It enables tests without finger contact; the highest safety level, CAT IV 1000 V suits it to performing measurements on

hybrid and electric vehicles and photovoltaic installations. A voltage test is even possible up to 1400 V DC. This top-quality instrument is characterised by its insusceptible and safe characteristics and complies with all the requirements set by a professional on a modern voltage tester. Voltage recognition is performed both optically and with a vibration. The safety level CAT IV 1000 V is almost unique for a voltage tester.



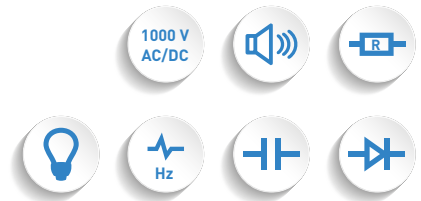
# OUR MULTIMETER

# TESTBOY

# 312

**Testboy**  
GmbH, Germany  
Stands For Quality  
Since 1953

INDUSTRIAL DIGITAL MULTIMETER WITH  
USB INTERFACE



## THE SPECIFICATIONS

|                             | TESTBOY 312  |                    |
|-----------------------------|--|--------------------|
| INDICATION                  | 44 mm large, illuminated LCD, 4 1/2 digit  |                    |
| DC VOLTAGE                  | 50 mV, 500 mV, 50 V, 500 V, 1000 V   | ± 0.5 %            |
| AC VOLTAGE (T-RMS)          | 50 mV, 500 mV, 50 V, 500 V, 1000 V   | ± 0.5 %            |
| DC CURRENT                  | 500 µA, 5 mA, 500 mA, 5 A, 10 A  | ± 0.5 %            |
| AC CURRENT                  | 500 µA, 5 mA, 500 mA, 5 A, 10 A  | ± 1.5 %            |
| RESISTANCE                  | 500 Ω, 5 kΩ, 50 kΩ, 500 kΩ, 5 MΩ, 50 MΩ  | ± 0,1 %<br>± 0,5 % |
| DUTY CYCLE                  | 5 Hz–500 kHz, 1–99 %   |                    |
| LOGIC FREQUENCY             | 5 Hz–5 MHz ± 0.006 %, Vpp 2–5 V square wave  |                    |
| LINEAR FREQUENCY            | 10 Hz–200 kHz ± 0.006 %, Vpp 10 mV sensitive   |                    |
| CONTINUITY TEST             | With acoustic signal   |                    |
| DIODE TEST                  | Forward voltage in mV  |                    |
| CAPACITY                    | up to 5000 µF  |                    |
| MEASUREMENT RANGE SELECTION | Automatic and manual   |                    |
| AUTO POWER-OFF              | 15 minutes   |                    |
| DATA-HOLD FUNCTION          | Yes  |                    |
| OVER-VOLTAGE CATEGORY       | CAT III 1000 V   |                    |
| STANDARD                    | EN 61010-1; EN 61010-2-033   |                    |
| DIMENSIONS                  | 200 x 100 x 40 mm  |                    |
| WEIGHT                      | 600 g  |                    |
| VOLTAGE SUPPLY              | 6 x 1.5 V AAA LR03   |                    |
| PC INTERFACE                | USB interface  |                    |
| SCOPE OF DELIVERY           | inc. carrying case, operating manual, test leads, Windows software on a CD ROM and a USB cable |                    |

## YOUR BENEFITS

- // Large LCD with bar graph display
- // T-RMS
- // USB interface
- // Auto/manual range

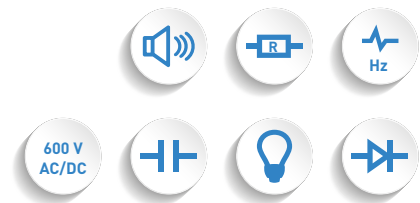
The high accuracy of measurement is the stand-out characteristic of the Testboy 312 digital multimeter. Its extremely effective measurement procedure prevents measuring errors in the case of non-sinusoidal or non-linear curves. The Testboy 312 also features further important functions such

as relative, min./max. and frequency measurement and a USB interface, through which all measurement results can be evaluated using Windows software. The tremendous flexibility of the Testboy 312 makes it especially useful for industrial applications.

# TESTBOY

## 313

A DIGITAL MULTIMETER WITH AUTOMATIC MEASURING RANGE PROTECTION



### THE SPECIFICATIONS

|                             | TESTBOY 313   |                   |
|-----------------------------|---|-------------------|
| INDICATION                  | 37 mm large, illuminated LCD                                |                   |
| DC VOLTAGE                  | 200 mV, 2 V, 20 V, 200 V                                    | ±0.5 %, ±3 digits |
|                             | 600 V   | ±0.8 %, ±5 digits |
| AC VOLTAGE (T-RMS)          | 2 V, 20 V, 200 V  | ±1.0 %, ±5 digits |
|                             | 600 V   | ±1.2 %, ±5 digits |
| DC CURRENT                  | 2 mA, 20 mA   | ±1.0 %, ±3 digits |
|                             | 200 mA  | ±1.5 %, ±3 digits |
|                             | 10 A  | ±2.0 %, ±5 digits |
| AC CURRENT                  | 2 mA, 20 mA, 200 mA   | ±1.0 %, ±5 digits |
|                             | 10 A  | ±1.5 %, ±3 digits |
|                             |   | ±2.0 %, ±8 digits |
| RESISTANCE                  | 200 Ω, 2 kΩ, 20 kΩ, 200 kΩ                                  | ±1.0 %, ±5 digits |
|                             | 2 MΩ, 20 MΩ   | ±1.0 %, ±5 digits |
|                             |   | ±1.0 %, ±5 digits |
|                             |   | ±1.5 %, ±5 digits |
| DIODE TEST                  | Yes   |                   |
| CONTINUITY TEST             | Yes   |                   |
| TEMPERATURE MEASUREMENT     | -20–1000°C with K-type sensor                               |                   |
| MAXIMUM INPUT VOLTAGE       | 600 V AC/DC   |                   |
| INPUT IMPEDANCE             | > 7.5 MΩ, type 10 MΩ (ACV & DCV)                            |                   |
| AC VOLTAGE RANGE            | 50-400 Hz   |                   |
| FREQUENCY MEASUREMENT RANGE | 0-20 kHz  |                   |
| CAPACITY MEASUREMENT RANGE  | up to 20 μF   |                   |
| FUSES                       | 200 mA (self-resetting)<br>10 A/1000 V (flick)              |                   |
| OPERATING TEMPERATURE RANGE | 0–40 °C (32–104 °F)   |                   |
| STORAGE TEMPERATURE RANGE   | -10–50 °C (14–122 °F)                                       |                   |
| OVER-VOLTAGE CATEGORY       | CAT III 600 V   |                   |
| STANDARD                    | EN 61010-1; EN 61010-2-033                                  |                   |
| DIMENSIONS                  | 200 x 89 x 38 mm  |                   |
| WEIGHT                      | 380 g inc. batteries  |                   |
| VOLTAGE SUPPLY              | 1 x 9 V block battery                                       |                   |
| SCOPE OF DELIVERY           | inc. test leads, carrying case and K-type sensor (0–180 °C) |                   |

## YOUR BENEFITS

- // Automatic measuring range protection
- // Large LCD with background lighting
- // Temperature measurement

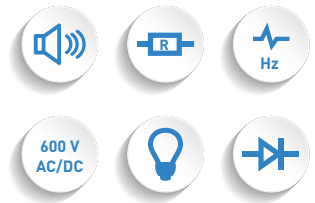
The Testboy 313 digital multimeter provides a number of standard functions and is especially safe to operate. The automatic measuring range protection rules out maloperation. It is also fitted with a clear and easily legible 28 mm LCD display and background lighting.



# TESTBOY

# 2200

**Testboy**  
GmbH, Germany  
Stands For Quality  
Since 1953



DIGITAL MULTIMETER WITH CABLE  
FRACTURE DETECTOR AND IONISATION  
CURRENT MEASUREMENT



## THE SPECIFICATIONS

|                             | TESTBOY 2200   |  |
|-----------------------------|--|--|
| DC VOLTAGE                  | 200 mV<br>2 V, 20 V, 200 V, 400 V  | ±0.5 %, ±3 digits<br>±0.8 %, ±5 digits |
| AC VOLTAGE                  | 2 V, 20 V<br>200 V, 400 V  | ±1.5 %, ±5 digits<br>±1.5 %, ±5 digits |
| DC CURRENT                  | 200 µA, 2000 µA<br>4 A   | ±1.0 %, ±3 digits<br>±1.2 %, ±5 digits |
| AC CURRENT                  | 200 µA, 2000 µA<br>4 A   | ±1.3 %, ±5 digits<br>±1.5 %, ±8 digits |
| RESISTANCE                  | 200 Ω<br>2 kΩ, 20 kΩ, 200 kΩ   | ±1.0 %, ±5 digits<br>±1.8 %, ±5 digits |
|                             | 2 MΩ<br>20 MΩ  | ±1.0 %, ±5 digits<br>±1.8 %, ±5 digits |
| DIODE TEST                  | Test current 0.6 mA<br>Off-load voltage type 1.5 V                                     |  |
| CONTINUITY TEST             | Signal tone upon resistance < 50 Ω   |  |
| NON-CONTACT VOLTAGE TEST    | 100-600 V AC   |  |
| MAXIMUM INPUT VOLTAGE       | 400 V AC/DC  |  |
| INPUT IMPEDANCE             | > 7.5 MΩ, type 10 MΩ (ACV & DCV)   |  |
| AC VOLTAGE RANGE            | 50-400 Hz  |  |
| FUSES                       | µA-/mA range F 200 mA/400 V<br>4 A range F4 A/400 V                                    |  |
| OPERATING TEMPERATURE RANGE | 0-40 °C (32-104 °F)  |  |
| STORAGE TEMPERATURE RANGE   | -10-50 °C (14-122 °F)  |  |
| LED TORCH                   | White high-performance LED   |  |
| AUTO POWER-OFF              | 15 minutes   |  |
| OVER-VOLTAGE CATEGORY       | CAT II 400 V, CAT III 300 V  |  |
| STANDARD                    | EN 61010-1:2010; EN 61010-2-030:2010;<br>EN 61010-2-033:2012; EN 61010-031/<br>A1:2008 |  |
| DIMENSIONS                  | 140 x 70 x 35 mm   |  |
| WEIGHT                      | 250 g inc. batteries   |  |
| VOLTAGE SUPPLY              | 2 x 1.5 V AAA LR03   |  |
| SCOPE OF DELIVERY           | inc. CAT III test leads, system carrying case  |  |

## YOUR BENEFITS

- // Non-contact cable break detector
- // LED flashlight
- // Auto-range function

The Testboy 2200 variable digital multimeter has all the functions requisite to universal operation in electrical installation, service and industrial applications. Practical and easy to operate, it provides precise measurements. Equipped with all standard functions, the Testboy 2200 also permits the measurement of ionisation currents. User protection is improved by the inbuilt contact-free cable fracture detector. An integrated LED torch facilitates working in poorly-lit locations.

# TESTBOY

## 3000

DIGITAL MULTIMETER WITH CABLE  
FRACTURE DETECTOR AND THE SAFETY  
LEVEL CAT IV



### THE SPECIFICATIONS

|                             | TESTBOY 3000  |  |
|-----------------------------|---|--|
| DC VOLTAGE                  | 200 mV<br>2 V, 20 V, 200 V,<br>600 V  | ±0.5 %, ±3 digits<br>±0.8 %, ±5 digits   |
| AC VOLTAGE                  | 2 V, 20 V<br>200 V, 600 V   | ±1.5 %, ±5 digits<br>±1.5 %, ±5 digits   |
| DC CURRENT                  | 200 µA, 2000 µA<br>10 A   | ±1.0 %, ±3 digits<br>±1.2 %, ±5 digits   |
| AC CURRENT                  | 200 µA, 2000 µA<br>10 A   | ±1.3 %, ±5 digits<br>±1.5 %, ±8 digits   |
| RESISTANCE                  | 200 Ω<br>2 kΩ, 20 kΩ, 200 kΩ<br>2 MΩ<br>20 MΩ                                 | ±1.0 %, ±5 digits<br>±1.0 %, ±5 digits<br>±1.0 %, ±5 digits<br>±1.8 %, ±5 digits |
| CONTINUITY TEST             | Signal tone upon resistance < 50 Ω  |  |
| DIODE TEST                  | Test current 0.6 mA<br>No-load voltage type 1.5 V                             |  |
| NON-CONTACT VOLTAGE TEST    | 100–600 V AC (optical and acoustic)   |  |
| MAXIMUM INPUT VOLTAGE       | 600 V AC/DC   |  |
| INPUT IMPEDANCE             | > 7.5 MΩ, type 10 MΩ (ACV & DCV)  |  |
| AC VOLTAGE RANGE            | 50–400 Hz   |  |
| OPERATING TEMPERATURE RANGE | 0–40 °C (32–104 °F)   |  |
| STORAGE TEMPERATURE RANGE   | –10–50 °C (14–122 °F)   |  |
| LED TORCH                   | White high-performance LED  |  |
| AUTO POWER-OFF              | 15 minutes  |  |
| OVER-VOLTAGE CATEGORY       | CAT IV 600 V  |  |
| STANDARD                    | EN 61010-1:2010; EN 61010-02-030:2010; EN 61010-031:2002; EN 61010-2-033:2012 |  |
| DIMENSIONS                  | 165 x 85 x 32 mm  |  |
| WEIGHT                      | 300 g inc. batteries  |  |
| VOLTAGE SUPPLY              | 2 x 1.5 V AAA   |  |
| SCOPE OF DELIVERY           | inc. test leads<br>Carrying case  |  |

## YOUR BENEFITS

- // Fracture and impact-proof ABS housing
- // Non-contact cable break detector
- // LED torch
- // Auto-range function

The modern design, cutting-edge technology and extended range of functions provided by the Testboy 3000 digital multimeter enables its universal deployment in both an industrial and commercial setting. The combination of the fracture and impact-proof ABS housing with the ease of handling provided by the Testboy 3000 permits its deployment in the most challenging of environments. Its significant functions include the non-contact cable fracture detector, an LED torch and an auto-range function.

# TESTBOY

# POCKET 100

DIGITAL MULTIMETER



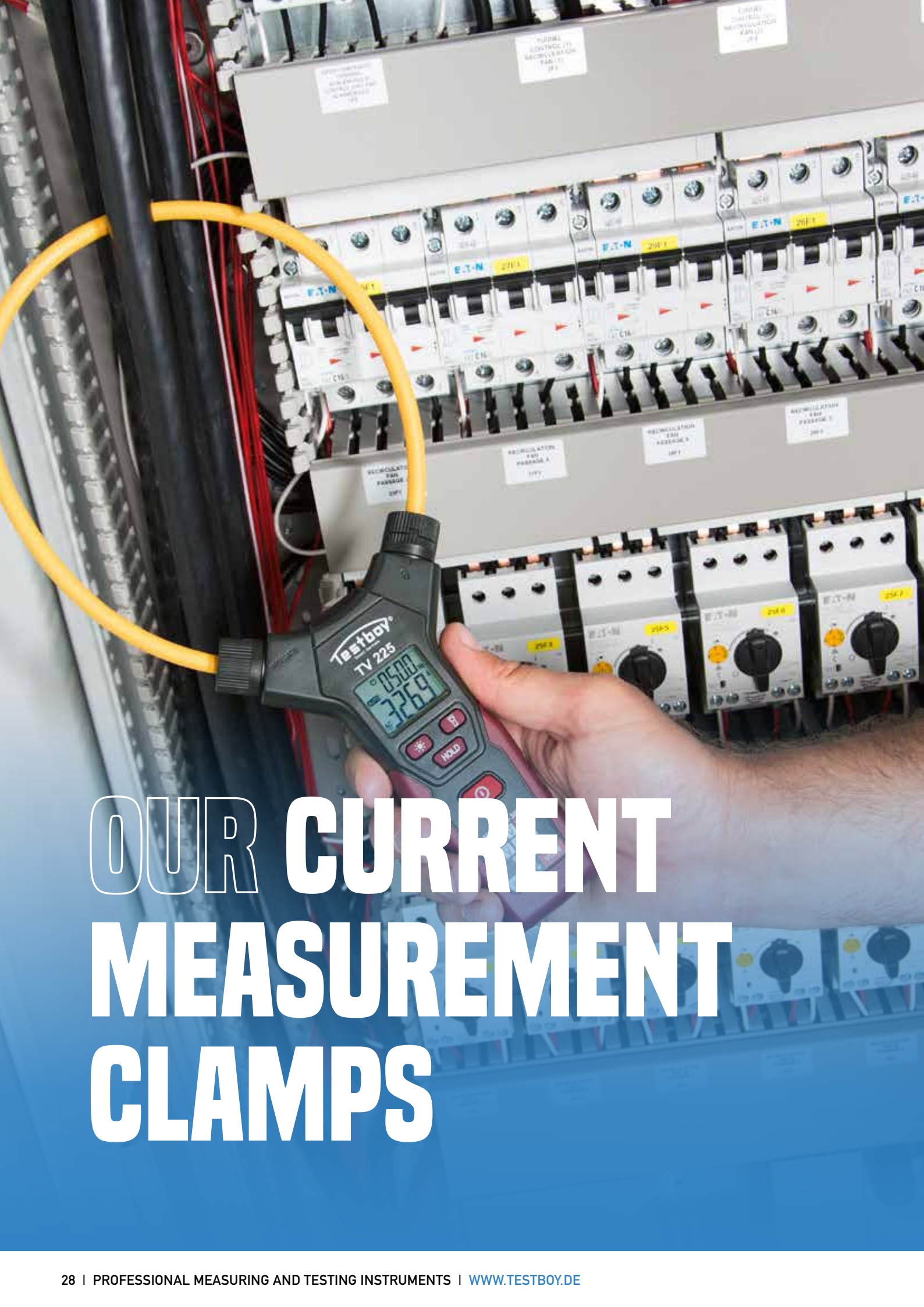
## THE SPECIFICATIONS

|                             | TESTBOY POCKET 100                     |                   |
|-----------------------------|--|-------------------|
| INDICATION                  | LCD with 4 digits                      |                   |
| AC VOLTAGE                  | 0 – 600 V                              | ±0.8 %, ±3 digits |
| DC VOLTAGE                  | 0 – 600 V                              | ±0.8 %, ±2 digits |
| RESISTANCE                  | 0 – 60 Ω                               | ±2.0 %, ±5 digits |
| INPUT IMPEDANCE ACV & DCV   | 10 MΩ                                  |                   |
| AC VOLTAGE RANGE            | 40 – 1000 Hz                           |                   |
| FREQUENCY MEASUREMENT       | 0 – 10 MHz                             | ±1.0 %, ±5 digits |
| CAPACITY MEASUREMENT RANGE  | 0 – 60 mF                              | ±4.0 %, ±3 digits |
| CONTINUITY TEST             | Yes signal tone upon resistance < 50 Ω |                   |
| DIODE TEST                  | Yes                                    |                   |
| DUTY CYCLE IN %             | Yes                                    | ±3.0 %, ±3 digits |
| DATA-HOLD FUNCTION          | Yes                                    |                   |
| MEASUREMENT RANGE SELECTION | Automatic                              |                   |
| OVER-VOLTAGE CATEGORY       | CAT III 600 V                          |                   |
| STANDARD                    | EN 61010-1, EN 61010-2-33              |                   |
| OPERATING TEMPERATURE RANGE | 0 – 40 °C / 32–104 °F (≤ 75 % RH)      |                   |
| OVER-VOLTAGE CATEGORY       | CAT II 400 V, CAT III 300 V            |                   |
| STORAGE TEMPERATURE RANGE   | -10 – 50 °C / 14–122 °F (≤ 75 % RH)    |                   |
| DIMENSIONS                  | 133 x 62 x 27 mm                       |                   |
| WEIGHT                      | 115 g inc. batteries                   |                   |
| VOLTAGE                     | 2 x 1.5 V AAA, LR03                    |                   |
| SCOPE OF DELIVERY           | inc. test leads                        |                   |

## YOUR BENEFITS

- // Fracture and impact-proof ABS housing
- // Highly legible LCD display with background lighting
- // Data-hold function
- // T-RMS

The Testboy Pocket was (and still is) a firm favourite amongst professional and hobby electricians alike. The Testboy Pocket 100 represents the systematic development of this handy multimeter. Its compact structure, large display and the many functions of this easy-to-operate instrument makes it the ideal companion in all standard professional and DIY applications.



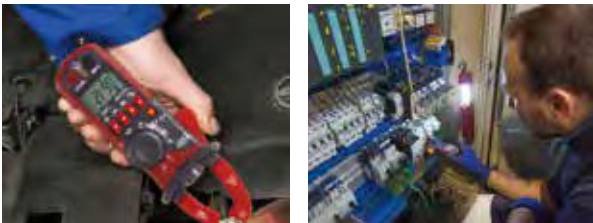
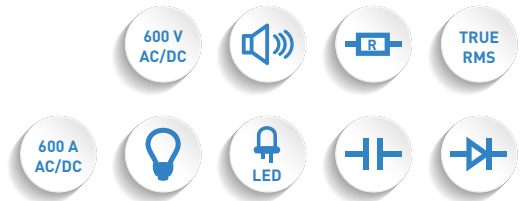
# OUR CURRENT MEASUREMENT CLAMPS

# TESTBOY

# TV 216 N

**Testboy**  
GmbH, Germany  
Stands For Quality  
Since 1953

DIGITAL CLAMP METER



## YOUR BENEFITS

- // Wide range of functions
- // Highly legible LCD
- // LED measurement location lighting
- // Non-contact measurement of frequency and probe rate
- // T-RMS measurement procedure for non-sinus voltages

This multitalent combines the functions of a current clamp and multimeter. With its wide range of measurement functions, the Testboy TV216N digital clamp meter is just the right helper for use in service, industry or installation. Useful details, such as the large display, manual or automatic measurement range selection and measurement position lighting, make for especially easy and reliable operation. The carrying case included in the scope of delivery protects the instrument and all its accessories even during transport.

### THE SPECIFICATIONS

|   | TESTBOY TV 216 N  |   |
|---|---|---|
| INDICATION  | LCD with 4 digits   |   |
| AC CURRENT T-RMS (40-400 HZ, LOWEST RESOLUTION 10 MA)   | 60 A, 600 A   | ±3.0 %, ±10 digits  |
| DC CURRENT (LOWEST RESOLUTION 10 MA)                    | 60 A, 600 A   | ±3.0 %, ±10 digits  |
| AC VOLTAGE T-RMS (40-400 HZ, LOWEST RESOLUTION 100 MV)  | Up to 600 mV<br>6 V, 60 V<br>600 V  | ±1.5 %, ±10 digits<br>±1.2 %, ±5 digits<br>±1.5 %, ±10 digits |
| DC VOLTAGE (LOWEST RESOLUTION 100 MV)                   | 600 mV, 6 V, 60 V<br>600 V  | ±0.8 %, ±3 digits<br>±1.0 %, ±5 digits                        |
| FREQUENCY MEASUREMENT CLAMP (LOWEST RESOLUTION 100 MHZ) | 600 Hz, 1 kHz<br>> 1 A AC rms   | ±1.5 %, ±5 digits   |
| FREQUENCY MEASUREMENT CONNECTOR                         | 600 Hz, 6 kHz, 10 kHz, > 0.2 V AC rms   | ±1.5 %, ±5 digits   |
| RESISTANCE  | 600 Ω, 6 kΩ, 60 kΩ, 600 kΩ, 6 MΩ, 60 MΩ   | ±1.2 %, ±2 digits<br>±2.0 %, ±5 digits                        |
| INPUT RESISTANCE  | 10 MΩ   |   |
| DUTY CYCLE  | 10-95 %, ±3.0 %, > 1 A AC rms   |   |
| FREQUENCY RANGE   | 10 Hz to 1 kHz  |   |
| CAPACITY MEASUREMENT                                    | Up to 60 mF   |   |
| DIODE TEST (LOWEST RESOLUTION 1 MV)                     | Test current ~1 mA<br>Test voltage ~3.3 V   |   |
| CONTINUITY TEST   | Signal tone upon resistance < 30 Ω  |   |
| MEASUREMENT RANGE SELECTION                             | Automatic or manual   |   |
| LIGHTING OF THE MEASUREMENT LOCATION                    | LED   |   |
| DATA-HOLD FUNCTION                                      | Yes   |   |
| OVER-VOLTAGE CATEGORY                                   | CAT III 600 V   |   |
| STANDARD  | EN 61010-01:2010; EN 61010-2-030:2010;<br>EN 61010-2-032:2012; EN 61010-2-033:2012; EN 6110-031/A1:2008 |   |
| DIMENSIONS  | 220 x 75 x 35 mm  |   |
| WEIGHT  | 340 g   |   |
| VOLTAGE SUPPLY  | 3 x 1.5 V AAA, LR03   |   |
| SCOPE OF DELIVERY                                       | inc. test leads and carrying case   |   |

# TESTBOY TV 218

A MINIATURE DIGITAL CLAMP METER



## THE SPECIFICATIONS

|                             | TESTBOY 218   |                   |
|-----------------------------|---|-------------------|
| INDICATION                  | LCD WITH 3 3/4 DIGITS, 4000 COUNTS                          |                   |
| DC CURRENT                  | 40 A, 200 A   | ±3.0 %, ±5 digits |
| AC CURRENT (T-RMS)          | 40 A, 200 A   | ±2.5 %, ±8 digits |
| RESOLUTION                  | 0.01 A at 40 A<br>0.1 A at 200 A                            |                   |
| MAX. CONSUMPTION            | ø 21 mm   |                   |
| SAMPLING RATE               | 3 x per second  |                   |
| OPERATING TEMPERATURE RANGE | 0-40 °C / 32-104 °F, <75 %RH                                |                   |
| STORAGE TEMPERATURE RANGE   | -20-60 °C / -4-140 °F, <80 %RH                              |                   |
| DATA-HOLD FUNCTION          | Yes   |                   |
| AUTO POWER-OFF              | Yes   |                   |
| OVER-VOLTAGE CATEGORY       | CAT III 300 V   |                   |
| STANDARD                    | EN 61010-1:2010; EN 61010-02-030:2010; EN 61010-02-032:2012 |                   |
| DIMENSIONS                  | 155 x 50 x 25 mm  |                   |
| WEIGHT                      | 95 g  |                   |
| VOLTAGE SUPPLY              | 2 x 1.5 V, LR44   |                   |
| SCOPE OF DELIVERY           | inc. carrying case  |                   |

## YOUR BENEFITS

- // Extremely compact construction
- // T-RMS
- // Data-hold function

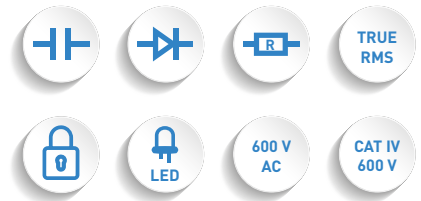
Small but perfectly formed! With real effective value measurement (True RMS) and a sensor rate of 3 per second, it provides exact measurement results even in difficult-to access locations. The clamps can be applied wherever you can fit your hand. Despite its compact construction the Testboy TV 218 convinces with useful functions such as data-hold or auto power-off.

# TESTBOY

## TV 225

**Testboy**  
GmbH, Germany  
Stands For Quality  
Since 1953

FLEXIBLE DIGITAL CLAMP METER



## YOUR BENEFITS

- // Wide range of functions
- // Highly legible LCD display
- // LED measurement location lighting
- // Non-contact measuring procedure of frequencies
- // T-RMS measurement procedure for non-sinus voltages suitable for higher line cross-sections

The wide range of measurement functions and high flexibility of the Testboy TV 225 clamp meter permits its universal deployment. Useful features, such as the large LC display with background lighting, real effective value measurement (True RMS) automatic measuring range selection and measurement position lighting, make for especially practical and safe operation.

### THE SPECIFICATIONS

|  | TESTBOY TV 216 N                            |   |
|--|---|---|
| INDICATION   | LCD with 4 digits                           |   |
| AC CURRENT T-RMS (40 - 1000 HZ) LOWEST RESOLUTION 10 mA)           | 60 A<br>600 A<br>3000 A                     | ±3.0 %, ±5 digits<br>±3.0 %, ±5 digits<br>±3.0 %, ±5 digits |
| AC VOLTAGE T-RMS (40 - 2000 HZ) (LOWEST RESOLUTION 0.001 V)        | 6 V<br>60 V<br>600 V                        | ±1.5 %, ±5 digits<br>±1.5 %, ±5 digits<br>±1.5 %, ±5 digits |
| DC VOLTAGE (LOWEST RESOLUTION 0.001 V)                             | 6 V<br>60 V<br>600 V                        | ±1.0 %, ±3 digits<br>±1.0 %, ±5 digits<br>±1.0 %, ±5 digits |
| FREQUENCY MEASUREMENT CLAMP (LOWEST RESOLUTION 0.1 HZ)             | 40 - 1000 Hz<br>> 1 A AC rms                | ±0.5 %, ±5 digits   |
| FREQUENCY MEASUREMENT CONNECTOR (LOWEST RESOLUTION 1 HZ)           | 40 Hz - 10 kHz<br>> 0.5 V AC rms            | ±0.5 %, ±5 digits   |
| RESISTANCE   | 6 kΩ, 60 kΩ, 600 kΩ, 6 MΩ ±1.0 %, ±3 digits |   |
| INPUT RESISTANCE   | 2 MΩ  |   |
| CONTINUITY TEST  | Signal tone upon resistance < 50 Ω          |   |
| LIGHTING OF THE MEASUREMENT LOCATION                               | LED   |   |
| FREQUENCY RANGE  | 10 Hz to 1 kHz                              |   |
| CAPACITY MEASUREMENT   | Up to 60 mF                                 |   |
| DIODE TEST (MAXIMUM CONSUMPTION: Ø 26 MM / LOWEST RESOLUTION 1 MV) | Test current ~1 mA<br>Test voltage ~3.3 V   |   |
| CONTINUITY TEST  | Signal tone upon resistance < 30 Ω          |   |
| MEASUREMENT RANGE SELECTION  | Automatic or manual                         |   |
| LIGHTING OF THE MEASUREMENT LOCATION                               | LED   |   |
| DATA-HOLD FUNCTION   | Yes   |   |
| OVER-VOLTAGE CATEGORY  | CAT IV 600 V                                |   |
| DIMENSIONS   | 324 x 178 x 30 mm                           |   |
| WEIGHT   | 210 g                                       |   |
| VOLTAGE SUPPLY   | 3 x 1.5 V AAA, LR03                         |   |
| SCOPE OF DELIVERY  | inc. test leads and carrying case           |   |



# OUR SOCKET OUTLET TESTERS



# TESTBOY

## TESTAVIT SCHUKI 1 LCD / 3 LCD



### SOCKET OUTLET TESTERS



### THE SPECIFICATIONS

|                       | TESTAVIT SCHUKI 1 LCD                | TESTAVIT SCHUKI 3 LCD |
|-----------------------|--------------------------------------|-----------------------|
| INDICATION            | Optical, LCD and LED                 |                       |
| OPERATING VOLTAGE     | 230 V, 50 Hz                         |                       |
| VOLTAGE SUPPLY        | via test object, max. 3 mA           |                       |
| RCD TEST              | Yes (via test button)                | No                    |
| RATED LEAKAGE CURRENT | 30 mA at 230 V AC                    | No                    |
| PROTECTION CLASS      | IP 40                                |                       |
| OVER-VOLTAGE CATEGORY | CAT II 300 V                         |                       |
| STANDARD              | EN 61010-1:2010; EN 61010-2-030:2010 |                       |
| OPERATING TEMPERATURE | 0-50 °C                              |                       |
| DIMENSIONS            | 60 x 60 mm                           |                       |
| WEIGHT                | 54 g                                 |                       |
| SCOPE OF DELIVERY     | inc. operating manual                |                       |

## YOUR BENEFITS

- // Quick and safe checking of installations
- // Finger contact to check the protective earth connection
- // FI test (Schuki 1 LCD)
- // FI test (30 mA at 230 V AC)

The Testavit Schuki 1 LCD and 3 LCD enable specialists to check easily whether sockets, cable drums or connecting cables are correctly connected in 230 V installations. Three LEDs permits quick and clear determination of the connection status. The finger contact enables testing for the presence of impermissibly high contact voltage at the protective earth connection. The Testavit Schuki 1 LCD can also be used to trigger a 30 mA FI circuit breaker (RCD).

# TESTBOY

## TESTAVIT SCHUKI 1 A / 3 A



### SOCKET OUTLET TESTERS



### THE SPECIFICATIONS

|                       | TESTAVIT SCHUKI 1A            | TESTAVIT SCHUKI 3A |
|-----------------------|-------------------------------|--------------------|
| INDICATION            | Optical, LED                  |                    |
| OPERATING VOLTAGE     | 230 V, 50 Hz                  |                    |
| VOLTAGE SUPPLY        | via test object               |                    |
| RCD TEST              | Yes (via test button)         | No                 |
| RATED LEAKAGE CURRENT | 30 mA                         | No                 |
| PROTECTION CLASS      | IP 40                         |                    |
| OVER-VOLTAGE CATEGORY | CAT II 300 V                  |                    |
| STANDARD              | IEC/EN 61010-1 (DIN VDE 0411) |                    |
| OPERATING TEMPERATURE | 0-50 °C                       |                    |
| DIMENSIONS            | 60 x 60 mm                    |                    |
| WEIGHT                | 40 g                          |                    |

## YOUR BENEFITS

- // Quick and safe checking of installations
- // FI test (Schuki 1A)

The Testavit Schuki 1 A and 3 A socket outlet testers are essential test instruments for all professional tradesmen. They indicate all hazardous connection errors at sockets, cable drums and connection cables in 230 V installations via specific LED combinations. This enables the quick and safe checking of installations. The Testavit Schuki 1a is also fitted with an FI test circuit.

# TESTBOY

# TESTAVIT SCHUKI 2 K



## SOCKET OUTLET TESTER



## THE SPECIFICATIONS

|                       | TESTAVIT SCHUKI 2K                      |
|-----------------------|---|
| INDICATION            | Optical, glow lamps                     |
| OPERATING VOLTAGE     | 230 V, 50 Hz                            |
| VOLTAGE SUPPLY        | via test object                         |
| RATED LEAKAGE CURRENT | 10 mA, 30 mA, 100 mA, 300 mA, 500 mA    |
| TRIP-OUT TIME         | 200 ms                                  |
| RCD TEST              | via test button                         |
| OVER-VOLTAGE CATEGORY | CAT II 300 V                            |
| STANDARD              | EN 61010-1 (DIN VDE 0411)               |
| DIMENSIONS            | 100 x 50 x 75 mm                        |
| WEIGHT                | 250 g                                   |
| SCOPE OF DELIVERY     | inc. operating manual and carrying case |

## YOUR BENEFITS

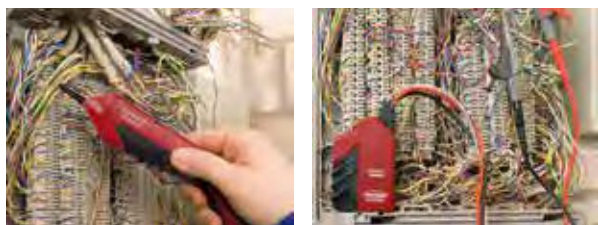
- // Easy checking of difficult-to-access sockets
- // FI test with adjustable rated leakage current

The Testavit Schuki 2K can be used to check sockets in 230-V installations for the correct connection of the conductor and to perform an FI test. The cable with a two-pin earthed plug makes for easy use in difficult-to-access areas.



# OUR CABLE DETECTOR, WALL SCANNER & NETWORK TESTER

## CABLE DETECTOR SET WITH LED FLASHLIGHT



### THE SPECIFICATIONS

|                   | TESTBOY 26   |
|-------------------|--|
| INDICATION        | Continuous or alternating tone   |
| LED TORCH         | Yes  |
| STANDARD          | EN 61010-1:2010;<br>EN 61010-2-030:2010;<br>EN 61010-031/A1:2008                 |
| DIMENSIONS        | 230 x 55 x 23 mm (receiver)<br>55 x 57 x 23 mm (transmitter)                     |
| WEIGHT            | 244 g  |
| VOLTAGE SUPPLY    | 2 x 9 V block battery  |
| SCOPE OF DELIVERY | Carrying case and operating manual<br>Adapter set (coaxial, F and RJ11 adapters) |

## YOUR BENEFITS

- // Variable volume setting
- // Maximum cable length 8000 m (unloaded)
- // LED flashlight

The Testboy 26 cable detector set is a location instrument with an integrated LED flashlight which simplifies the detection of lines in a wall and cable ducts. A signal is modulated on a cable end via the crocodile clips or an optional adapter using the transmitter. The other end of the cable can then be found quickly and precisely using the receiver without contact or the need to strip the cable insulation. A pulsing or constant tone can be selected on the location instrument. Twisted two-core cables can be identified exactly in telecommunications and network technology. The device is also fitted with an adapter set with which to locate COAX-, F- and RJ11 connections.

# TESTBOY 27 ANALOG

CABLE DETECTOR SET, EXTERNAL  
VOLTAGE PROTECTION UP TO 400 V



## THE SPECIFICATIONS

|                             | TESTBOY 27 ANALOG   |
|-----------------------------|---|
| INDICATION                  | Optical and acoustic  |
| EXTERNAL VOLTAGE PROTECTION | to 400 V  |
| DIMENSIONS                  | 245 x 60 x 29 mm (receiver)<br>135 x 60 x 33 mm (transmitter) |
| WEIGHT                      | 318 g (inc. batteries)  |
| OPERATING TEMPERATURE       | 5 °C – 40 °C  |
| VOLTAGE SUPPLY              | 5 x 1.5V type AA (transmitter and receiver)                   |
| COLOUR                      | Red   |
| SCOPE OF DELIVERY           | Carrying case and adapter set with coax, F and RJ11 adapter   |

## YOUR BENEFITS

- // Voltage proof up to 400 V
- // Practical LED display
- // Adjustable transmission and reception level

The Testboy 26 cable detector set is a development of the Testboy 26. This new location instrument, voltage-proof up to 400 V locates lines in walls and cable ducts. A signal is modulated on a cable end via the crocodile clips or an optional adapter using the transmitter. The other end of the cable can then be found quickly and precisely using the receiver without contact or the need to strip the cable insulation. A continual or alternating tone can be selected on the location instrument.

# TESTBOY

## 27 DIGITAL

CABLE DETECTOR SET, EXTERNAL  
VOLTAGE PROTECTION UP TO 400 V



### THE SPECIFICATIONS

|                             | TESTBOY 27 DIGITAL  |
|-----------------------------|---|
| INDICATION                  | Optical and acoustic  |
| EXTERNAL VOLTAGE PROTECTION | to 400 V  |
| DIMENSIONS                  | 245 x 60 x 29 mm (receiver)<br>135 x 60 x 33 mm (transmitter) |
| WEIGHT                      | 318 g (inc. batteries)  |
| OPERATING TEMPERATURE       | 5 °C – 40 °C  |
| VOLTAGE SUPPLY              | 5 x 1.5V type AA (transmitter and receiver)                   |
| COLOUR                      | Black   |
| SCOPE OF DELIVERY           | Carrying case and adapter set with coax, F and RJ11 adapter   |

## YOUR BENEFITS

- // Voltage proof up to 400 V
- // Location of lines in the soil
- // Practical LED display
- // Adjustable transmission and reception level

The Testboy 27 digital also sends an optical signal. Two-core cables can also be identified in telecommunications and network technology. It is also fitted with an RJ11 connection. The Testboy 27 digital permits the location of lines and cables in the ground e.g. to locate the limiting wire of a mowing robot.

# TESTBOY

## 28

MAINS WIRING TESTERS FOR USB, RJ11, RJ45 AND BNC LINES



### THE SPECIFICATIONS

|                       | TESTBOY 28   |
|-----------------------|--|
| INDICATION            | LCD  |
| MEASURING APPLICATION | USB, RJ11, RJ45, BNC lines<br>Cable length measurement |
| DIMENSIONS            | 150 x 65 x 25 mm                                       |
| WEIGHT                | 190 g inc. battery                                     |
| VOLTAGE SUPPLY        | 1 x 9 V block battery                                  |
| SCOPE OF DELIVERY     | inc. carrying case                                     |

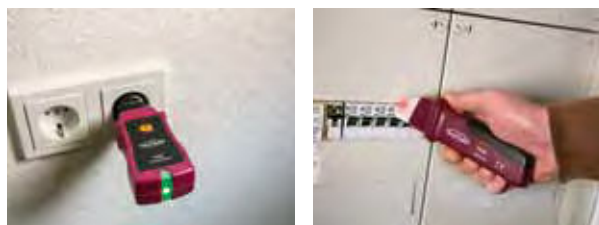
## YOUR BENEFITS

- // Clear display
- // Maximum cable length 8000 m (unloaded)
- // Simple troubleshooting

The Testboy 28 is a handy digital multifunction network tester and cable length measuring device with sound generator and port finder function. The test results are displayed on the clear LC display. Conventional cable formats can be examined for interruptions, crossover, transposition, short circuits or split-pairs instantly using the Testboy 28. Cable length can also be measured. A handy and easy-to-use test instrument, the Testboy 28 is indispensable for professional users and fitters.



### FUSE LOCATOR



#### THE SPECIFICATIONS

|                                      | TESTBOY 30                       |
|--------------------------------------|----------------------------------|
| OPERATING VOLTAGE                    | 100-240 V AC                     |
| OPERATING FREQUENCY                  | 50-60 Hz                         |
| ADJUSTABLE SENSITIVITY               | Yes                              |
| CONTACT-FREE CABLE FRACTURE DETECTOR | Yes                              |
| OVER-VOLTAGE CATEGORY                | CAT II 300 V                     |
| STANDARD                             | EN 61010-1                       |
| OPERATING TEMPERATURE RANGE          | 0-40 °C / 32-104 °F ( 75 % RH)   |
| STORAGE TEMPERATURE RANGE            | -10-50 °C / 14-122 °F ( 75 % RH) |
| DIMENSIONS RECEIVER                  | 190 x 54 x 37 mm                 |
| DIMENSIONS TRANSMITTER               | 95 x 56 x 30 mm                  |
| WEIGHT RECEIVER                      | 130 g inc. batteries             |
| WEIGHT TRANSMITTER                   | 85 g                             |
| VOLTAGE SUPPLY                       | 1 x 9 V block battery            |
| SCOPE OF DELIVERY                    | inc. carrying case               |

## YOUR BENEFITS

- // Automatic switching between test and search mode
- // Optical and acoustic indication

The Testboy 30 fuse locator locates circuit breakers with absolute certainty and assigns them to the corresponding socket. It instrument set consists of two units: The transmitter and the receiver. The adjustable responsivity facilitates exact localisation. This enables the operator to assign circuits in unfamiliar installations (e.g. in old buildings or newly purchased houses) so as to be able to identify subsequent installations. The receiver of the set can also be used as a contact-free voltage tester.

# TESTBOY

## TV 700

DIGITAL WALL SCANNER



Heimwerker-Test.de  
06/2017  
Top class

Heimwerker  
Praxis 2/2017

1.4; Top class

Cost/performance:  
"Good - excellent"



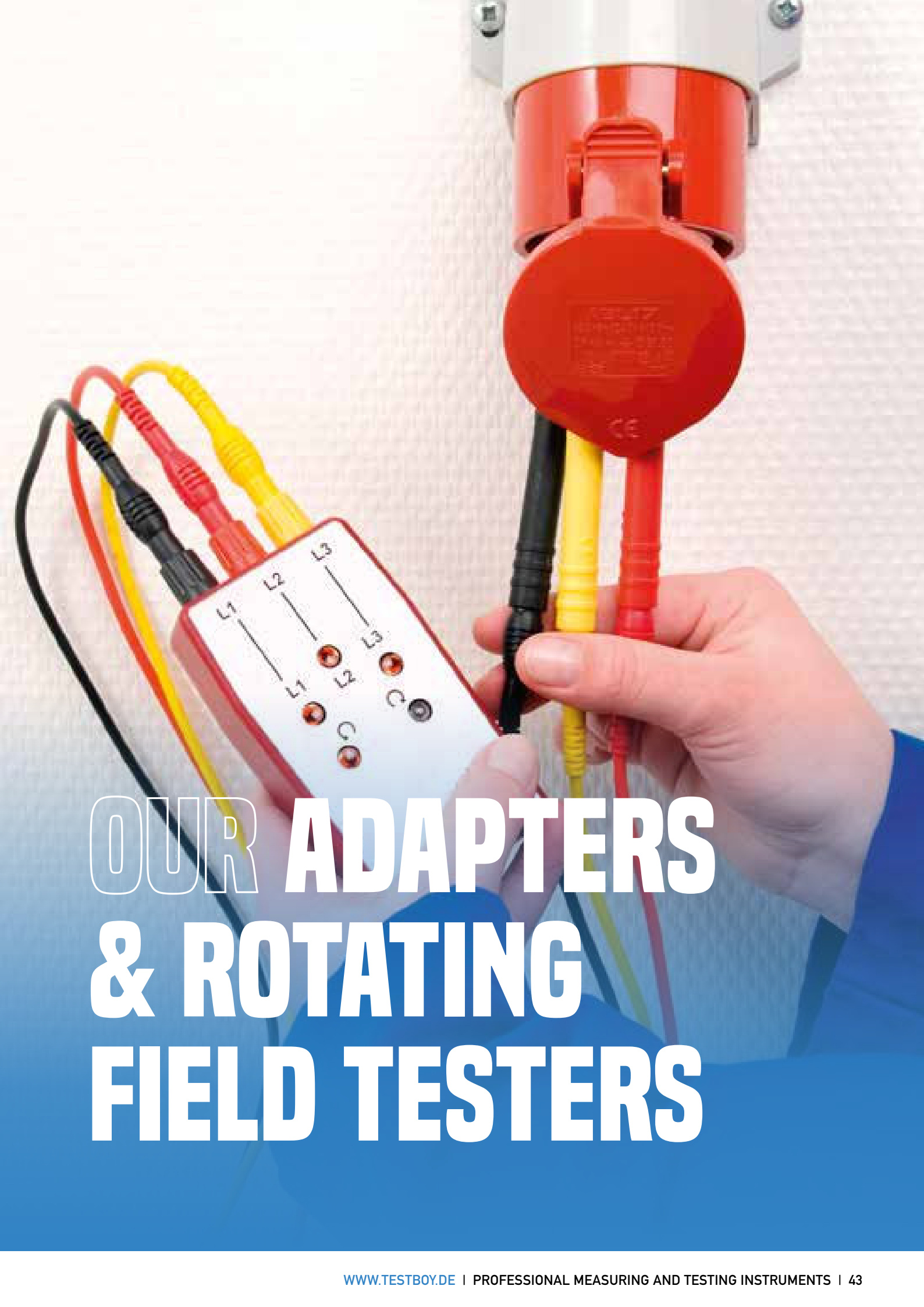
### THE SPECIFICATIONS

|                       | TESTBOY 700   |
|-----------------------|---|
| INDICATION            | Acoustic and optical on a high contrast LCD with background lighting and traffic light indication |
| SCANNING DEPTH        | 80 mm ferrous metals<br>60 mm non-ferrous metals<br>22 mm wood<br>50 mm live lines                |
| AUTOMATIC CALIBRATION | Yes   |
| AUTO POWER-OFF        | Yes   |
| DIMENSIONS            | 145 x 68 x 25 mm  |
| WEIGHT                | 160 g   |
| VOLTAGE SUPPLY        | 1 x 9 V block battery   |
| SCOPE OF DELIVERY     | Carrying case   |

## YOUR BENEFITS

- // Practical traffic light indication
- // Contrasting LCD with background lighting
- // Automatic calibration

The easily legible and bright display of the Testboy TV 700 gives comprehensive information about the scanning result. Nothing is hidden, from the lateral distance and material to the installation depth. It registers magnetic and non-metallic metals as well as wood or live lines. The approach of objects is indicated by an LED lamp and a bar chart in the display and enables simple, millimetre-exact location within a matter of seconds. Operation is self-explanatory after consultation of the operating manual included in the scope of delivery.



# OUR ADAPTERS & ROTATING FIELD TESTERS

# TESTBOY

## TV 416/432 (A)

CEE ADAPTERS\*



### THE SPECIFICATIONS

|                              | TESTBOY TV<br>416/432 | TESTBOY TV<br>416A/432 A |
|------------------------------|-----------------------|--------------------------|
| PHASE SEQUENCE<br>INDICATION | Glow lamps            | No                       |
| VOLTAGE SUPPLY               | via test object       |                          |
| OVER-VOLTAGE<br>CATEGORY     | CAT II 300 V          |                          |
| DIMENSIONS                   | 165 x 65 mm           |                          |
| WEIGHT                       | 250 g                 |                          |

\*ONLY FOR TEST PURPOSES

## YOUR BENEFITS

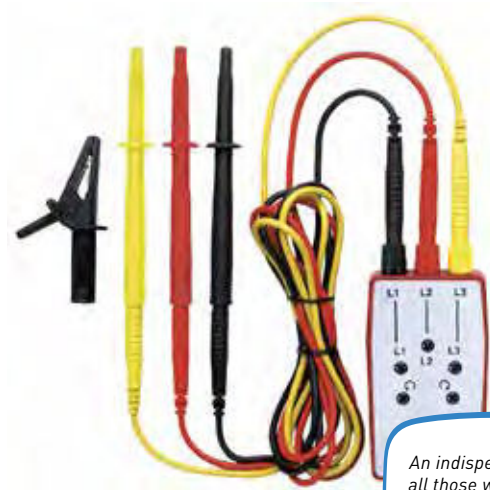
- // Unbreakable PE housing
- // Can be combined with the Testavit Schuki 1A, 2K and 3A
- // Phase sequence indication (only TV 416/432)

The Testboy TV416/432 (A) consists of a compact CEE adapter consisting of a combination of a CEE plug (16A or 32A) a Schuko socket and a self-closing folding cover. It is also equipped with integrated electronics for phase sequence measurement (only TV 416/432). Used in combination with the Testavit Schuki 1A, 2K and 3A socket outlet testers, it can determine wiring errors or test the effectiveness of the FI circuit breaker.

# TESTBOY

# TV 410 N

ROTATING FIELD TESTER



*An indispensable tool for all those working on with low voltage three-phase alternating current. It is in constant use.*



## THE SPECIFICATIONS

|                     | TESTBOY TV 410N   |
|---------------------|---|
| INDICATION          | Optical, 5 glow lamps   |
| RATED VOLTAGE       | 400 V AC  |
| CURRENT CONSUMPTION | < 3 mA  |
| FREQUENCY RANGE     | 50/60 Hz  |
| DUTY CYCLE          | 30 sec.   |
| VOLTAGE SUPPLY      | From the measurement object   |
| HOUSING             | Impact and break-proof ABS plastic  |
| DIMENSIONS          | 115 x 60 x 25 mm  |
| WEIGHT              | 75 g  |
| SCOPE OF DELIVERY   | inc. professional probes, 4 mm safety cable, professional crocodile clips and carrying case |

## YOUR BENEFITS

- // Comprehensive connection cable set
- // Impact-resistant and unbreakable ABS housing

The five glow lamps on the Testboy TV 410 N rotating field tester confirms the presence of all three phases. It is demonstrated by the direction of the rotary field. The impact-resistant, unbreakable ABS plastic housing, the fully insulated 4 mm connectors and the associated comprehensive and adaptable connection cable set ensure safe testing and rapid location of the phasing in a three-phase system. This instrument can work without an additional power supply.

# TESTBOY

## TV 411

NON-CONTACT ROTATING FIELD AND  
ROTARY TESTER



### THE SPECIFICATIONS

|                       | TESTBOY TV 411  |
|-----------------------|---|
| INDICATION            | OPTICAL, 6 LEDs   |
| VOLTAGE RANGE         | 70-600 V AC   |
| FREQUENCY RANGE       | 50/60 Hz  |
| TEST LEAD LENGTH      | 50 cm   |
| OVER-VOLTAGE-CATEGORY | CAT III 600 V   |
| HOUSING               | ABS plastic   |
| DIMENSIONS            | 110 x 70 x 30 mm  |
| WEIGHT                | 220 g (inkl. Batterien)   |
| VOLTAGE SUPPLY        | 2 x 1,5 V AA  |
| SCOPE OF DELIVERY     | inc. professional probes, 4 mm safety cable, professional crocodile clips and carrying case |

## YOUR BENEFITS

- // Non-contact measurement of the phase sequence and rotating field
- // Integrated rotary tester
- // Quick recording LED display

The Testboy TV 411 non-contact rotating field and rotary tester is especially suited to performing servicing in motor installations and multi-phase networks, as it displays the phase sequence and direction of the rotary field of the external conductor optically through six LEDs. An agile service application enables contact-free measurement with the coloured insulated clamps and minimises the danger of contact with electrically active conductors. The connected rotary tester works without contact to ascertain the direction of rotation of the motor shaft by measuring the alternating magnetic field.



OUR

# INSTALLATION & DEVICE TESTERS

# TESTBOY

## TV 431

DIGITAL INSULATION TESTER



### THE SPECIFICATIONS

|                                       | TESTBOY TV 431                                 |   |  |
|---------------------------------------|--|---|--|
| INDICATION                            | Large LC display with bar graph display        |   |  |
| INSULATION RESISTANCE                 | 0.01 M $\Omega$ –100 G $\Omega$                |   |  |
| TEST VOLTAGE (TEST CURRENT MAX. 3 mA) | 250 V DC<br>500 V DC<br>1000 V DC<br>2500 V DC | 0 – 250 M $\Omega$<br>0 – 500 M $\Omega$<br>0 – 1000 M $\Omega$<br>0 – 1 G $\Omega$ | $\pm 3\%$ , $\pm 5$ digits<br>$\pm 3\%$ , $\pm 5$ digits<br>$\pm 3\%$ , $\pm 5$ digits<br>$\pm 3\%$ , $\pm 5$ digits |
| RESISTANCE TESTING                    | up to 200 $\Omega$                             |   |  |
| CONTINUITY TEST                       | Signal tone upon resistance < 3 $\Omega$       |   |  |
| AC VOLTAGE                            | 0 – 200 V<br>200 – 750 V                       | 0.1 V<br>1 V  | $\pm 1.5\%$ , $\pm 5$ digits<br>$\pm 1.5\%$ , $\pm 5$ digits   |
| DC VOLTAGE                            | 0 – 200 V<br>200 – 1000 V                      | 0.1 V<br>1 V  | $\pm 1.5\%$ , $\pm 5$ digits<br>$\pm 1.5\%$ , $\pm 5$ digits   |
| AUTO POWER-OFF                        | Yes  |   |  |
| DATA-HOLD FUNCTION                    | Yes  |   |  |
| MEASURED VALUE MEMORY                 | For 20 measured values                         |   |  |
| RELATIVE VALUE MEASUREMENT            | Yes  |   |  |
| OVER-VOLTAGE CATEGORY                 | CAT IV 600 V / CAT III 1000 V                  |   |  |
| DIMENSIONS                            | 193 x 150 x 75 mm                              |   |  |
| WEIGHT                                | 1245 g   |   |  |
| VOLTAGE SUPPLY                        | 6 x 1.5 V C LR14                               |   |  |
| SCOPE OF DELIVERY                     | inc. test lead set and carrying case           |   |  |

## YOUR BENEFITS

- // Test with four selectable test voltages (250 V, 500 V, 1000 V, 2500 V)
- // Continuity test
- // DC and AC voltage measurement

Testboy has developed the Testboy TV 431 digital insulation tester for simple testing of the insulation resistance of devices, electrical systems and circuits. Four selectable test voltages up to 2500 V enable especially meaningful measurement results. The ability to perform AC and DC voltage measurements and continuity and resistance measurements considerably extends the area of application.



# TESTBOY

# TV 441

DIGITAL EARTH RESISTANCE TESTER



*I admit freely, earthing measurement in existing systems is a complex issue which the normal fitter would rather ignore.*



## THE SPECIFICATIONS

|                            | TESTBOY TV 441   |  |
|----------------------------|--|--|
| INDICATION                 | LC display with bar graph display                      |  |
| EARTH RESISTANCE           | 0 – 29.99 Ω<br>30 – 99.99 Ω<br>100 – 999 Ω<br>1 – 4 kΩ | ±2 %, ±6 digits<br>±3 %, ±3 digits<br>±3 %, ±3 digits<br>±3 %, ±3 digits |
| EARTH VOLTAGE              | 0 – 200 V, 50/60 Hz                                    | ±1.5 %, ±5 digits  |
| MEASUREMENT SYSTEM         | Constant current, 3 mA (800 Hz)                        |  |
| AUTO POWER-OFF             | After approx. 15 minutes                               |  |
| MEASURED VALUE RECORDING   | Max., Min., average value                              |  |
| RELATIVE VALUE MEASUREMENT | Yes  |  |
| MEASURED VALUE MEMORY      | Yes (for 100 measured values)                          |  |
| OVER-VOLTAGE CATEGORY      | CAT III 300 V  |  |
| STANDARD                   | IEC/EN 61010-1 (DIN VDE 0411)                          |  |
| DIMENSIONS                 | 193 x 150 x 75 mm                                      |  |
| WEIGHT                     | 955 g  |  |
| VOLTAGE SUPPLY             | 6 x 1.5 V AA, LR06                                     |  |
| SCOPE OF DELIVERY          | inc. earth rod, test lead set and carrying case        |  |

## YOUR BENEFITS

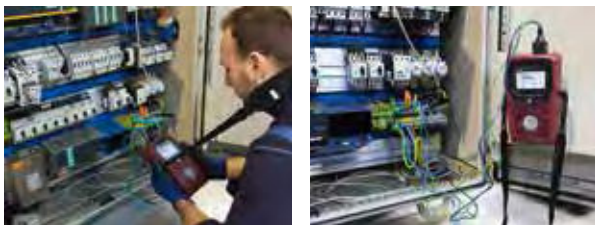
- // Auto power-off
- // Measured value memory for 100 measured values

Earthing systems and their connections are subject to the influence of atmospheric conditions. The earth electrodes are also subject to corrosion resulting from the water and salts in the soil. The Testboy TV 441 digital earth resistance tester is designed for checking the resistance between the reference earth and the connection point of the earthing system in accordance with IEC/EN 61010-1 (DIN VDE 0411). To conduct the measurement, an alternating current is fed between the auxiliary earthing rod and the earth electrode to be measured. The voltage drop is measured and the earth resistance is determined (three conductor method) with a probe positioned in the area of the reference earth of the earth to be measured.

# TESTBOY

## TV 445

INSTALLATION TESTER DIN VDE 0100-600



### THE SPECIFICATIONS

|                                    | TESTBOY TV 445   |
|------------------------------------|--|
| INDICATION                         | 128 x 64 pixels with background lighting and integrated Good/Bad display indication  |
| VOLTAGE MEASUREMENT                | 0-550 V AC   |
| EARTH RESISTANCE MEASUREMENT       | 0-9999 Ω   |
| INSULATION RESISTANCE TEST VOLTAGE | 0-999 MΩ<br>50 V, 100 V, 250 V, 500 V, 1000 V  |
| RCD TESTING                        | Type A, AC   |
| CONTACT VOLTAGE RCD-UC             | 0-100 V  |
| TRIP-OUT TIME                      | 0-2500 ms  |
| TRIP-OUT CURRENT                   | 10 mA, 15 mA, 30 mA, 100 mA, 300 mA, 500 mA, 1000 mA   |
| OPERATING TEMPERATURE              | 0-40 °C  |
| OVER-VOLTAGE CATEGORY              | CAT III 600 V, CAT IV 300 V  |
| TEST STANDARDS                     | DIN VDE 0100-600, ÖVE E8001, NIN/NIV   |
| HOUSING                            | Robust plastic with integrated magnetic clamp  |
| VOLTAGE SUPPLY                     | 6 x NiMH battery or battery AA   |
| SCOPE OF DELIVERY                  | inc. universal test lead 3 x 1.5 m, test cable for Schuko sockets, 3 probes (blue, black, green), 3 crocodile clips (blue, black, green), mains adapter and batteries, carry strap, quick guide, product test data and carrying case |

## YOUR BENEFITS

- // Auto power-off
- // Measured value memory for 100 measured values

The Testboy TV 445 installation tester enables checks in accordance with DIN VDE 0100-600. It is particularly easy to operate, not least due to the large LC display and specific help screens, which provide exact descriptions of how to perform a measurement. Already stored safety and RCD (FI) characteristics evaluate the result using a Good/Bad message.

With FI measurement, an automatic mode performs all requisite measurements sequentially. The Testboy TV 445 is an easy-to-use DIN VDE 0100 measuring instrument. This lightweight, robust and ergonomic instrument with an integrated magnet holder enables you to work without getting tired.

# TESTBOY

## TV 455

**Testboy**  
GmbH, Germany  
Stands For Quality  
Since 1953

DIN VDE 0100-600 INSTALLATION TESTER  
WITH COMPLETE EVALUATION SOFTWARE



### THE SPECIFICATIONS

|                              | TESTBOY TV 455  |
|------------------------------|---|
| INDICATION                   | 128 x 64 pixels with background lighting and integrated Good/Bad display indication   |
| VOLTAGE MEASUREMENT          | 0-550 V   |
| EARTH RESISTANCE MEASUREMENT | 0-9999 Ω  |
| INSULATION RESISTENCE        | 0.15 MΩ bis 1 GΩ  |
| TEST VOLTAGE                 | 50 V, 100 V, 250 V, 500 V, 1000 V   |
| RCD TESTING                  | Type A, AC, B   |
| CONTACT VOLTAGE RCD-UC       | 0-100 V   |
| TRIP-OUT TIME                | 0-2500 ms   |
| TRIP-OUT CURRENT             | 10 mA, 30 mA, 100 mA, 500 mA, 1000 mA   |
| MEASURED VALUE MEMORY        | 1900 measured values  |
| OVER-VOLTAGE CATEGORIES      | CAT III 600 V, CAT IV 300 V   |
| TEST STANDARDS               | DIN VDE 0100-600, ÖVE E8001, NIN/NIV  |
| OPERATING TEMPERATURE        | 0-40 °C   |
| HOUSING                      | Robust plastic with integrated magnetic clamp   |
| INTERFACE                    | USB   |
| VOLTAGE SUPPLY               | 6 x NiMH battery or battery AA  |
| SCOPE OF DELIVERY            | inc. universal test lead 3 x 1.5 m, test cable for Schuko sockets, probes, crocodile clips, mains adapter and batteries, carry strap, quick guide, CD with PC software, factory calibration certificate and carrying case |

## YOUR BENEFITS

- // Testing in accordance with DIN VDE 0100-600, ÖVE E8001, NIN/NIV
- // USB interface and PC software
- // Testing of AC/DC sensitive RCDs (TYPE B)
- // Integrated test lead calibration
- // Protocol in accordance with ZVEH (optional)

Its counterpart the Testboy TV 445 is highly respected in the specialist world. The further developed Testboy TV 455 is just as suitable (impressively so) for tests performed in accordance with DIN VDE 0100-600. It is also equipped with an integrated test lead calibration. The large LCD display with integrated background lighting makes it easy to read off results, notifications, measurement parameters and messages. Two GOOD/BAD LED indicators are located on the side of the LC display. A USB interface means that the measurement results (up to 1,900 measured values) can be easily evaluated using the PC software included in the scope of delivery. It enables the testing of TYPE B AC/DC sensitive RCDs.

# TESTBOY TV 465

DEVICE TESTER DIN VDE 0701/0702



## THE SPECIFICATIONS

|  | TESTBOY TV 465  |
|--|---|
| INDICATION                                   | 128 x 64 pixels with background lighting and integrated Good/Bad display indication                               |
| PROTECTIVE CONDUCTOR RESISTANCE TEST CURRENT | 0-1999 $\Omega$<br>200 mA   |
| INSULATION RESISTANCE TEST VOLTAGE           | 0-199.9 M $\Omega$<br>up to 500 V DC  |
| ALTERNATIVE LEAKAGE CURRENT                  | 0-20.0 mA   |
| MEASURING VOLTAGE                            | 0-300 V   |
| POLARITY TESTING                             | Test voltage <50 V AC   |
| MEASUREMENT RANGE SELECTION                  | Automatic   |
| OVER-VOLTAGE CATEGORY                        | CAT II 300 V  |
| PROTECTION CLASS                             | I, II, III  |
| TEST STANDARDS                               | DIN VDE 0701-0702, DGUV specification 3, BetrSichV, ÖVE E8701/E8702   |
| DIMENSIONS                                   | 235 x 140 x 80 mm   |
| WEIGHT                                       | 1195 g  |
| INTERFACES                                   | USB and RS-232  |
| VOLTAGE SUPPLY                               | 6 x 1.2 V NiMH battery or 6 x 1.5 V AA  |
| SCOPE OF DELIVERY                            | inc. user manual, mains adapter and batteries, system carrying case, test lead with test probe and crocodile clip |
| ACCESSORIES (OPTIONAL)                       | Memory expansion and software, USB interfaces cable   |

## YOUR BENEFITS

- // Testing in accordance with DIN VDE 0701-0702, DGUV regulation 3, BetrSichV, ÖVE E 8701/E 8702
- // Integrated compensation module
- // Menu-controlled help function
- // Battery capacity sufficient for approx. 2600 test objects (depending on the number of measurements)
- // Screening test possible

The Testboy TV465 is a mains-independent device tester for testing mobile devices in accordance with DIN VDE 0701/0702. The instrument is easy to operate, permitting quick and easy testing of electrical equipment or tools with an ON / OFF switch, heating devices, motor devices, lamps, multiple distributors and household appliances. Pre-programmed or self-defined test sequences, the menu-assisted help function and the Good/Bad messages means that the Testboy TV465 is especially easy to operate, enabling quick and easy testing.

# TESTBOY

# TV 470

**Testboy**  
GmbH, Germany  
Stands For Quality  
Since 1953

VDE TESTER DIN 0701/0702/EN 62353

incl.  
Software

USB

DAkKS



## THE SPECIFICATIONS

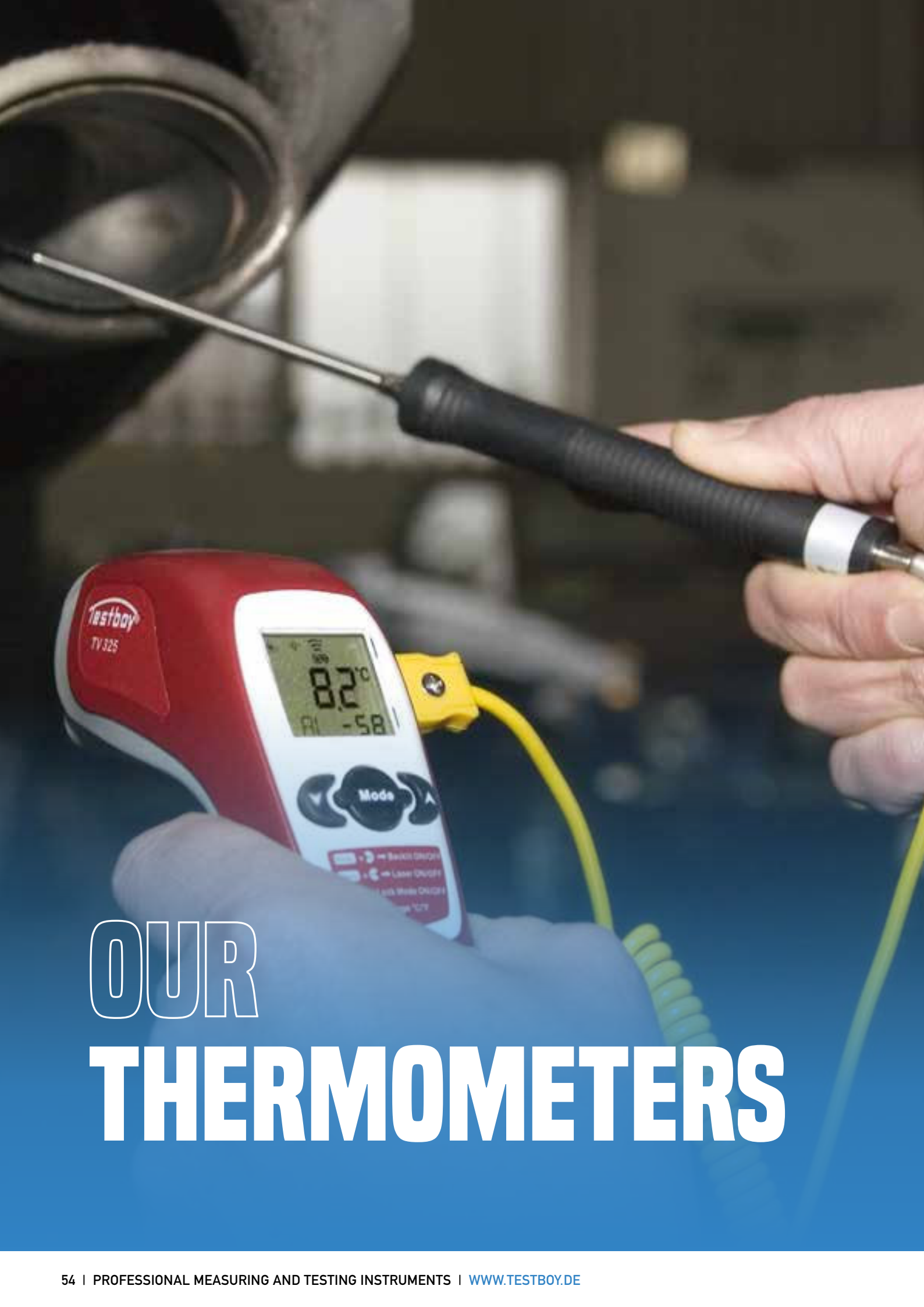
|                                 | TESTBOY TV 470  |            |
|---------------------------------|---|------------|
| INDICATION                      | 128 x 64 pixels with background lighting  |            |
| PROTECTIVE CONDUCTOR RESISTANCE | 0.1-2 $\Omega$  | $\pm 10$ % |
| INSULATING RESISTANCE           | 0.1-200 M $\Omega$  | $\pm 10$ % |
| CONTACT CURRENT                 | 0.1-20 mA   | $\pm 5$ %  |
| SUBSTITUTE LEAKAGE CURRENT      | 0.1-20 mA   | $\pm 5$ %  |
| LOAD CURRENT                    | 0.2-16.0 A  | $\pm 5$ %  |
| CAPACITY                        | 50-3700 V A   | $\pm 5$ %  |
| PELV TEST                       | from 25 V eff.  |            |
| INPUT CURRENT                   | Max. 16 A   |            |
| DATA MEMORY                     | up to 500 test objects  |            |
| OVER-VOLTAGE CATEGORY           | CAT II 600 V  |            |
| TEST STANDARDS                  | DIN VDE 0701/0702, EN 62353   |            |
| OPERATING TEMPERATURE           | 0-40 °C   |            |
| DIMENSIONS                      | 250 x 170 x 55 mm   |            |
| WEIGHT                          | 1445 g  |            |
| INTERFACE                       | USB   |            |
| VOLTAGE SUPPLY                  | 230 V $\pm 10$ %; 50 Hz $\pm 2$ %   |            |
| SCOPE OF DELIVERY               | incl. test lead set, Windows® software CD, USB connection cable, carrying case, mains lead and bar code scanner |            |

## YOUR BENEFITS

- // Specified test sequence with Good/Bad message
- // Help screen for each measurement
- // Bar code scanner
- // Protocol software
- // DAkKS calibration certificate logging

The Testboy TV 470 is a handy test instrument designed for safety and repeat testing of mobile equipment in accordance with DIN VDE 0701/0702 and EN 62353. The level of safety required for mobile devices can only be guaranteed by regular testing. The self-explanatory operability of the Testboy TV 470 and its logging software and DAkKS calibration certificate enables companies to carry out checks and documentation themselves in accordance with the standards.

The ability to run semi-automatic test sequences saves a lot of time. The bar code scanner included in the scope of delivery means that the annual check need only scan the instrument, perform the test and load the data in the software. This automatically assigns the results to the correct customer in the database.



# OUR THERMOMETERS

# TESTBOY

## TV 323

INFRARED THERMOMETERS

**Testboy**  
GmbH, Germany  
Stands For Quality  
Since 1953



### THE SPECIFICATIONS

|                            | TESTBOY TV 323                           |
|----------------------------|--|
| INDICATION                 | LCD with background lighting             |
| DETECTOR                   | Thermopile                               |
| MEASUREMENT OPTICS         | 12:1                                     |
| LASER POINT                | Switchable                               |
| MEASUREMENT RANGE          | -50-550 °C, -58-1022 °F                  |
| MEASUREMENT ACCURACY       | ±2.0 °C, ±3.6 °F                         |
| RESPONSE TIME              | < 1 s                                    |
| RANGE EXCEEDED INDICATOR   | "1" upon exceeding the measurement range |
| EMISSIVITY                 | 0.95 (fixed)                             |
| AUTO POWER-OFF             | After c. 10 s                            |
| DATA-HOLD FUNCTION         | Yes                                      |
| MIN./MAX. VALUE INDICATION | Yes                                      |
| OPERATING TEMPERATURE      | 0-50 °C, 32-122 °F                       |
| HUMIDITY                   | 10-80 % RH                               |
| HOUSING                    | Impact and break-proof ABS plastic       |
| DIMENSIONS                 | 152 x 94 x 38 mm                         |
| WEIGHT                     | 127 g                                    |
| VOLTAGE SUPPLY             | 2 x 1.5 V AAA LR03                       |

## YOUR BENEFITS

- // Data-hold function
- // Auto power-off
- // Min./max. value indication

The pistol form Testboy TV 323 infrared thermometer convinces thanks to its easy operation. Its integrated laser pointer permits point- exact temperature measurement. The manually selectable display illumination ensures that the measured data can be read off even in poor light conditions. It features an extended temperature range from -50° C to 550° C (-58° F to 1022° F) and a min./max. value indication. The emissivity is set to 0.95 so that it can measure the majority of materials such as concrete, wood or coated surfaces excellently. It is well suited for daily use in the trade and industry.

# TESTBOY

## TV 325

INFRARED THERMOMETER WITH  
ADJUSTABLE EMISSION VALUE



### THE SPECIFICATIONS

|                                    | TESTBOY TV 325   |
|------------------------------------|--|
| INDICATION                         | LCD with background lighting   |
| DETECTOR                           | Thermopile   |
| MEASUREMENT OPTICS                 | 12:1   |
| LASER POINT                        | Switchable   |
| MEASUREMENT RANGE                  | -60–500 °C, -76–932 °F infrared<br>-64–1400 °C, -82,3–1999 °F<br>with K-type sensor  |
| MEASUREMENT ACCURACY INFRARED      | Object 15–35 °C, ambient 25 °C:<br>±1.0°C, ±1.8°F<br>Object -33–15 °C and 35–500 °C, ambi-<br>ent 23 °C ±3 °C: ±2°C, 4°F or ±2 %, the<br>greater value applies |
| MEASUREMENT ACCURACY K-TYPE SENSOR | Ambient 23°C ± 6°C:<br>±1 °C, 1.8 °F or ±1 %, the greater value applies  |
| EMISSIVITY                         | 0.95 specified, adjustable from 0.10–1.00 in 0.01 increments   |
| RESOLUTION                         | 0.1° (-9.9–199.9°)   |
| RESPONSE TIME                      | < 0.5 s  |
| MIN./MAX. VALUE MEMORY             | With alarm function  |
| AVERAGING                          | Yes  |
| AUTO POWER-OFF                     | After c. 10 s  |
| DATA-HOLD FUNCTION                 | Yes  |
| TEMPERATURE SENSOR                 | Connection for K-type sensor   |
| OPERATING TEMPERATURE              | 0–50 °C, 32–122 °F   |
| HUMIDITY                           | 10–90 % RH   |
| HOUSING                            | Impact and break-proof ABS plastic   |
| DIMENSIONS                         | 49 x 133 x 146 mm  |
| WEIGHT                             | 222 g  |
| VOLTAGE SUPPLY                     | 2 x 1.5 V AAA, LR03  |
| SCOPE OF DELIVERY                  | inc. carrying case and K-type sensor (-50–200 °C)  |

## YOUR BENEFITS

- // Min./max. value memory/alarm function
- // Adjustable emissivity
- // Averaging
- // Connection for conventional K-type sensor

The Testboy TV 325 infrared thermometer impresses with its many useful functions, for example, min./max. value memory with alarm function and averaging. The non-contact measurement range extends from -60° C to 500° C (-76° F to 932° F). The emissivity can be set from 0.10 to 1.00 in 0.01 increments. Infrared measuring instruments register the infrared radiation emitted from a measurement object and use it to calculate temperature. In this context, emissivity describes the ability of a body to emit infrared energy to its surroundings. It is also fitted with a connection

for conventional K-type sensors; this increases the measurement range to -64° C to 1400° C (-82,3° F to 1999° F). The comprehensive performance spectrum and easy handling of the TV 325 makes it especially suited to mobile use in locations with poor access and in industrial systems. It is also just as useful in car workshops, heating, cooling and air-conditioning systems and in electrical trades.





# OUR LUXMETERS, RANGE FINDER & WORKING LIGHT

# TESTBOY

## TV 333

DIGITAL LUXMETER



### THE SPECIFICATIONS

|                          | TESTBOY TV 333                           |
|--------------------------|--|
| INDICATION               | 18 mm high LCD                           |
| MEASUREMENT RANGE        | 0–100000 lx                              |
| MEASUREMENT RATE         | 0.4 s                                    |
| RANGE EXCEEDED INDICATOR | "1" upon exceeding the measurement range |
| OPERATING TEMPERATURE    | 0–50 °C (32–122 °F)                      |
| DIMENSIONS               | 130 x 72 x 30 mm                         |
| WEIGHT                   | 40 g                                     |
| VOLTAGE SUPPLY           | 1 x 9 V block battery                    |
| SCOPE OF DELIVERY        | inc. carrying case, operating manual     |

## YOUR BENEFITS

- // Free-moving sensor with coiled cable
- // Large, high-contrast display
- // Sensor cover

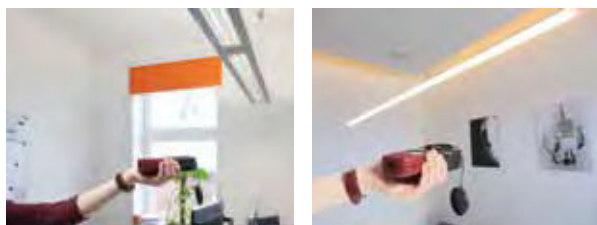
Lux (lx) is the physical unit for the strength of illumination provided by a source of light. Derived from the Latin for light (lux) this unit indicates how much light from a lighting source falls on a surface. The Testboy TV 333 digital luxmeter can be used to measure the light strength in a particular location. The freely mobile sensor affords access to poorly-accessible locations. The silicon photo diodes behind a large diffuser enables precise measurements of up to 100.000 lx. Some 100,000 lx can be measured outside on a bright sunny day; the lighting strength in a TV studio amounts to c. 1.000 lx, whilst a candle provides 1 lx from a metre.

The Testboy TV 333 is suitable for performing measurements in a range of contexts including offices, conference rooms, classrooms and other public buildings.

# TESTBOY

# TV 335

LED LUXMETER TO 400.000 LX



## THE SPECIFICATIONS

|                            | TESTBOY TV 335   |
|----------------------------|--|
| INDICATION                 | LCD with 3 1/2 digits and bar chart  |
| MEASUREMENT RANGE          | 20, 200, 2000, 20000, 400000 lx<br>20, 200, 2000, 40000 fc<br>0- 999900 cd |
| ACCURACY                   | 3 % V(λ) adjustment<br>2 % cosine correction                               |
| SENSOR                     | Silicone photo diode   |
| SPECTRAL RANGE             | 320-730 nm   |
| SAMPLING RATE              | ø 2 measurements per second  |
| OPERATING TEMPERATURE      | -10-50 °C / 14-122 °F  |
| MAX. RELATIVE AIR HUMIDITY | 85 % (not condensing)  |
| DIMENSIONS                 | 89 x 190 x 42.5 mm   |
| WEIGHT                     | 250 g (inc. battery)   |
| VOLTAGE SUPPLY             | 1 x 9 V block battery  |
| SCOPE OF DELIVERY          | inc. carrying case   |

## YOUR BENEFITS

- // Artificial light sensitive photo diode (e.g. LED illumination)
- // Adjustable colour temperature
- // Data-hold function
- // Sensor cover

The Testboy TV 335 spectral light meter is suitable for measuring the light strength of LEDs. The digital luxmeter is easy to use and stable and has a large measurement range up to 400,000 lx. The artificial light-sensitive photo diode with adjustable colour temperature measures all light sources including LED illumination. The large LC display ensures quick and reliable reading of the measurement result.

# TESTBOY

## TV 610

LASER RANGE FINDER



### THE SPECIFICATIONS

|                       | TESTBOY TV 610   |
|-----------------------|--|
| INDICATION            | LCD with background lighting   |
| MEASUREMENT RANGE     | 0.05–60.00 m   |
| MEASUREMENT ACCURACY  | ± 1.5 mm   |
| RESOLUTION            | 1 mm   |
| MEASUREMENT FUNCTIONS | Continuous measurement<br>Addition/subtraction<br>Surface area calculation<br>Volume calculation<br>Pythagoras calculation<br>Max.-min. Value, indirect measurement via two or three-point measurement |
| REFERENCE POINT       | Leading edge, rear edge<br>Stop angle from corner  |
| MEASURED VALUE MEMORY | The last 20 measured values  |
| MEASURING UNITS       | Meter, feet, inches  |
| AUTO POWER-OFF        | After c. 180 s   |
| OPERATING TEMPERATURE | 0–40 °C  |
| DIMENSIONS            | 124 x 49 x 27 mm   |
| WEIGHT                | 130 g  |
| VOLTAGE SUPPLY        | 2 x 1.5 V AAA, LR03  |
| SCOPE OF DELIVERY     | inc. carrying case   |

## YOUR BENEFITS

- // Range up to 60 m
- // Addition/subtraction
- // Surface area calculations
- // Volume calculations
- // Pythagoras calculations

The unhandy yardstick is outperformed by the Testboy TV 610 laser range finder. It provides reliable measures of distances of up to 60 metres and enables addition and subtraction. In addition to lengths, it can measure volume, surface area and perform Pythagoras calculations, and uses two or three point indirect measurement procedures to determine height. It is fitted with an easily legible LCD with background lighting and spirit level. The device switches off automatically following idle time to protect the batteries.

# TESTBOY

## LIGHT 500

LED WORKING LIGHT WITH NIMH  
BATTERY AND HOLDING MAGNETS



PRODUCT VIDEO:  
[WWW.TESTBOY.DE](http://WWW.TESTBOY.DE)



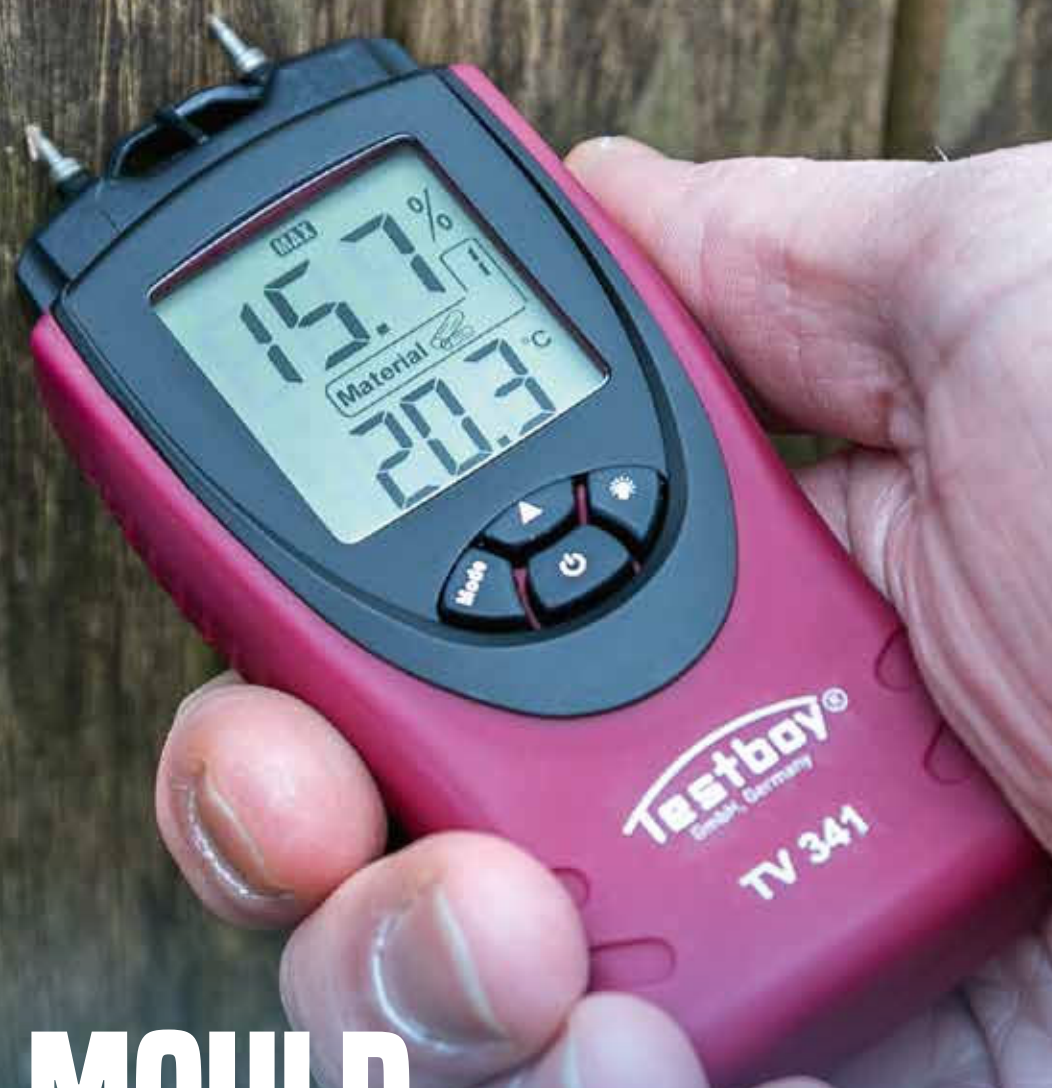
### THE SPECIFICATIONS

|                   | TESTBOY LIGHT 500  |
|-------------------|--|
| LIGHTING UNIT     | 27 bright white LEDs   |
| LED CONFIGURATION | 1 x centre row as a spot<br>2 x outside rows as diffused light |
| SUSPENSION        | Attachment hook, can be rotated through 360°                   |
| ATTACHMENT        | 2 holding magnets  |
| SERVICE LIFE      | 4.5 h  |
| CHARGING TIME     | 2 h  |
| PROTECTION CLASS  | IP 54  |
| STANDARD          | EN 61010-1 (DIN VDE 0411)                                      |
| DIMENSIONS        | 320 x 40 x 45 mm   |
| WEIGHT            | 320 g  |
| VOLTAGE SUPPLY    | 1 x 3.6 V 1800 mAh NiMH battery                                |
| SCOPE OF DELIVERY | inc. charger 230 V AC and 12 V DC                              |

## YOUR BENEFITS

- // 27 high-performance LEDs
- // c. 4.5 h operating life
- // Maintenance-free NiMH battery
- // IP 54
- // breakage and impact-resistant ABS housing

The Testboy Light 500 is a high-performance LED work light with an impact-proof, acid and oil resistance housing. Fitted with 27 super-bright white LEDs and a maintenance-free NiMH battery, it provides up to 4 ½ hours of illumination. The integrated microprocessor ensures optimum charging, operational reliability and brightness control. The light can be secured laterally using its two integrated holding magnets or from with the hook on the top cap. It is especially suited to use in a cramped working environment.



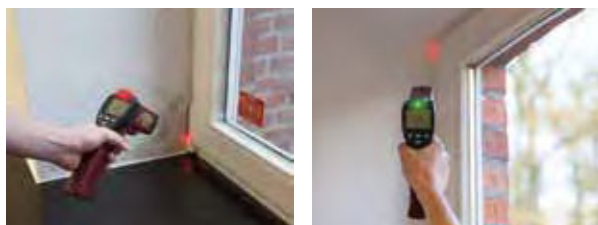
# OUR MOULD DETECTOR, HYGROMETER & ANEMOMETER

# TESTBOY

## TV 328

**Testboy**  
GmbH, Germany  
Stands For Quality  
Since 1953

DEW-POINT MEASURING INSTRUMENT  
(MOULD DETECTOR)



### THE SPECIFICATIONS

|                               | TESTBOY TV 328   |
|-------------------------------|--|
| INDICATION                    | LCD with background lighting   |
| DETECTOR                      | Thermopile   |
| MEASUREMENT OPTICS            | 12:1   |
| MEASUREMENT RANGE             | -20-350 °C, 4-662 °F infrared<br>-10-40 °C, 14-140 °F with ambient sensor  |
| MEASUREMENT ACCURACY INFRARED | Object 10-30 °C:<br>±1 °C, ±1.8 °F<br>Object -20-10 °C and 30-200°C:<br>±3 °C, 4 °F or ±2 %, the greater value applies |
| EMISSIVITY                    | 0.75, 0.85 and 0.95 pre-set  |
| RESOLUTION                    | 0.1 °  |
| RESPONSE TIME                 | < 0.5 s  |
| AUTO POWER-OFF                | After c. 25 s  |
| DATA-HOLD FUNCTION            | Yes  |
| OPERATING TEMPERATURE         | -10-40 °C, -14-140 °F  |
| HUMIDITY                      | 10-90 % RH   |
| LASER CLASS                   | II, 650 nm, <1 mW  |
| HOUSING                       | Impact and break-proof ABS plastic   |
| DIMENSIONS                    | 56 x 194 x 162 mm  |
| HUMIDITY                      | 10-90 % RH   |
| WEIGHT                        | 222 g  |
| VOLTAGE SUPPLY                | 1 x 9 V block battery  |
| SCOPE OF DELIVERY             | inc. carrying case   |

## YOUR BENEFITS

- // Dew point display
- // Relative humidity measurement
- // Laser ring
- // Adjustable emissivity
- // Averaging

The Testboy TV 328 dew-point measuring instrument locates areas threatened by mould and hidden and invisible thermal bridges and can thus be used to prevent mould accretion. The measurement range extends from -20°C to +200°C with infrared and from -10°C to +40°C with an ambient sensor. The comprehensive performance spectrum - such as the thermopile measurement optics of 12:1, a switchable laser ring, relative humidity measurement, a switchable display illumination and a selectable emissivity - makes the Testboy TV328 the ideal companion for mobile use.

# TESTBOY

## TV 341

HYGROMETER



### THE SPECIFICATIONS

|                       | TESTBOY TV 341                          |
|-----------------------|---|
| MEASUREMENT RANGE     | 0 – 55 %                                |
| MEASUREMENT ACCURACY  | ± 2 %                                   |
| RESOLUTION            | 0.1 %                                   |
| MEASUREMENT FUNCTIONS | Hold, max., min. value                  |
| AUTO POWER-OFF        | Yes                                     |
| OPERATING TEMPERATURE | -10 – 50 °C / 14–122 °F                 |
| STORAGE TEMPERATURE   | -20 – 60 °C                             |
| DIMENSIONS            | 143 x 55 x 28 mm                        |
| WEIGHT                | 115 g                                   |
| VOLTAGE SUPPLY        | 3 x 1.5 V AAA                           |
| SCOPE OF DELIVERY     | inc. operating manual and carrying case |

## YOUR BENEFITS

- // No separate test leads or probes
- // Auto power-off
- // Integrated self-testing unit

The Testboy TV 341 is a handy instrument for measuring the moisture content in building materials. This precise test instrument is fitted with integrated and slimline measurement probes, which enable the testing of a wide range of materials, without causing visible damage. This includes timber, plywood, fixing plates, veneers, gypsum or plaster-board. The measurement probes can also be used to measure the temperature. The measurement probes are protected during transport by a practical cap. The instrument features a max./min. value memory for the measurement of large surfaces and quantities. A hold function facilitates measurements in poorly-accessible locations by saving a measured value in the display at the press of a button.



# TESTBOY

## TV 350

DIGITAL WHEEL ANEMOMETER  
(WIND METER)



### THE SPECIFICATIONS

|                        | TESTBOY TV 350  |  |
|------------------------|---|--|
| INDICATION             | LCD with background lighting  |  |
| WIND SPEED             | 0.80 – 30.0 m/s<br>1.4 – 108.0 km/h<br>0.9 – 67.0 mil/h<br>80 – 5900 ft/m<br>1.3 – 98.5 ft/s<br>0.8 – 58.0 kn | ±2.0 %, ±50 digits<br>±2.0 %, ±50 digits<br>±2.0 %, ±50 digits<br>±2.0 %, ±50 digits<br>±2.0 %, ±50 digits |
| AIR TEMPERATURE        | -20 – 60 °C<br>-4 – 140 °F  | ±1.5 °C<br>±2.7 °F   |
| RELATIVE AIR HUMIDITY  | 20 – 90 % RH  | ±3.0 % RH at 25 °C   |
| AIR FLOW               | 0 – 9999 m³/s (CMS)<br>0 – 99990 m³/m (CMM)<br>0 – 99990 ft³/m (CFM)  |  |
| MIN./MAX. VALUE MEMORY | Yes   |  |
| AUTO POWER-OFF         | Yes   |  |
| TEMPERATURE UNITS      | °C /°F  |  |
| AMBIENT TEMPERATURE    | Yes   |  |
| DEW-POINT TEMPERATURE  | Yes   |  |
| WET-BULB TEMPERATURE   | Yes   |  |
| INTERFACE              | USB   |  |
| DIMENSIONS             | 85 x 165 x 38 mm (W x H x D)  |  |
| WEIGHT                 | 200 g   |  |
| VOLTAGE SUPPLY         | 1 x 9 V block battery   |  |
| SCOPE OF DELIVERY      | Inc. carrying case  |  |

## YOUR BENEFITS

- // Illuminated LC display
- // Min./max. value memory
- // USB interface for evaluating the data on PC (Windows)

A wheel anemometer is a small, almost free-range wind generator. The Testboy TV 350 is the ideal assistant when working with all heating, ventilation and air conditioning systems. In addition to wind speeds from 0.80 to 30.0 m/s, the Testboy TV 350 measures relative humidity from 20 to 90 %, air temperature from – 20 to +60°C, air flow from 0 to 9999 m³/sec, dew point temperature and air volumes. The measured values can be recorded via the integrated USB interface and the software included in the scope of delivery. The user can switch between all international measuring units such as metres, kilometres, feet, miles and knots.

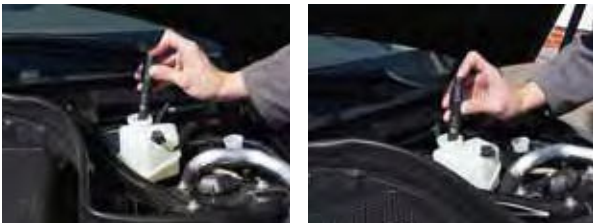


# OUR VEHICLE MEASURING INSTRUMENTS

# TESTBOY

# 50

## BRAKE FLUID TESTER DOT 4



### THE SPECIFICATIONS

|                   | TESTBOY 50         |
|-------------------|--------------------|
| INDICATION        | Optical via 5 LEDs |
| MEASUREMENT RANGE | DOT 4              |
| PROTECTION CLASS  | IP40               |
| STANDARD          | EN 61010-1:2010    |
| DIMENSIONS        | 152 x 23.5 mm      |
| WEIGHT            | 40 g               |
| VOLTAGE SUPPLY    | 1 x 12 V, type V23 |

## YOUR BENEFITS

- // Checks of brake fluids DOT 4
- // Illuminated measurement probes
- // Long service life, as acid and alkali-resistant

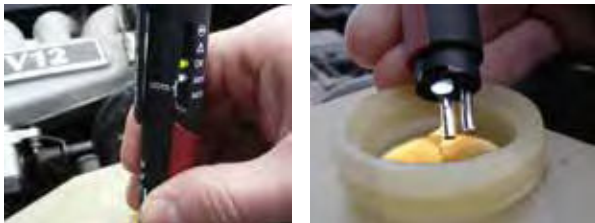
The Testboy 50 is a handy testing pin which can test the brake fluids DOT 4 very quickly. Five LEDs precisely indicate the water content in brake fluids manufactured on a glycol basis. Brake fluid is hygroscopic, absorbing water from the air humidity. This makes it suitable for quick checking during the order acceptance in car workshops.

The United States Department of Transportation (DOT) standard number 116 stipulates the minimum requirements placed on glycol-based ( DOT 3, DOT 4, DOT 5.1 ) and silicone based brake fluid (DOT 5).

# TESTBOY

## 55

BRAKE FLUID TESTER DOT 3, DOT 4,  
DOT 5.1



### THE SPECIFICATIONS

|                   | TESTBOY 55            |
|-------------------|-----------------------|
| INDICATION        | Optical via 3 LEDs    |
| MEASUREMENT RANGE | DOT 3, DOT 4, DOT 5.1 |
| PROTECTION CLASS  | IP 40                 |
| STANDARD          | EN 61010-1:2010       |
| DIMENSIONS        | 152 x 23.5 mm         |
| WEIGHT            | 40 g                  |
| VOLTAGE SUPPLY    | 2 x 1.5 V AAA, LR03   |

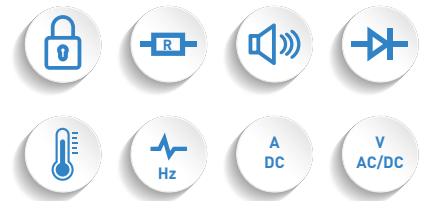
## YOUR BENEFITS

- // Checks of brake fluids DOT 4 DOT 4, DOT 5.1
- // Measurement location lighting
- // Long service life, as acid and alkali-resistant

The Testboy 55 is a handy testing pin which can test the brake fluids DOT 3, DOT 4 and DOT 5.1 very quickly. Five LEDs provide a clear indication of the water content in brake fluids manufactured on a glycol base. Brake fluid is hygroscopic, absorbing water from the air humidity. This makes the Testboy 55 the perfect instrument for car, HGV and motorbike workshops alike.

The United States Department of Transportation (DOT) standard number 116 stipulates the minimum requirements placed on glycol-based ( DOT 3, DOT 4, DOT 5.1 ) and silicone based brake fluid (DOT 5).

## CAR MULTIMETER WITH TEMPERATURE MEASUREMENT



## YOUR BENEFITS

- // Speed measurement
- // Closing angle measurement (ignition point)
- // Duty cycle measurement
- // LCD with autom. background lighting
- // Data-hold function

The Testboy 65 is especially well suited for application in the automotive and workshop sector. In addition to the standard multimeter functions which it provides, the Testboy 65 enables easy measurement of the speed, closing angle duty cycle and temperature measurement from -40 to 1000 °C. The comparably low cost of the Testboy 65 and its broad range of deployment makes it a firm favourite amongst DIY workers.

Extremely robust and easy to operate, it convinces in everyday use.

### THE SPECIFICATIONS

|                             | TESTBOY 65  |  |
|-----------------------------|---|--|
| INDICATION                  | LCD with automatic background lighting, 3 1/2 digit, 1999                   |  |
| DC VOLTAGE                  | 200 mV, 2 V, 20 V, 120 V  | ±0.5 %, ±5 digits  |
| AC VOLTAGE                  | 50 V  | ±1.2 %, ±5 digits  |
| DC CURRENT                  | 20 mA, 200 mA<br>20 A   | ±1.8 %, ±3 digits<br>±3.0 %, ±5 digits   |
| RESISTANCE                  | 200 Ω, 2 kΩ, 20 kΩ,<br>200 kΩ<br>2 MΩ<br>200 MΩ                             | ±1.0 %, ±5 digits<br>±1.0 %, ±5 digits<br>±(measured value-10)<br>x 5 %, ±5 digits |
| TEMPERATURE MEASUREMENT     | -40-0 °C<br>0-400 °C<br>400-1000 °C   | ±2.0 %, ±8 digits<br>±2.0 %, ±3 digits<br>±1.0 %, ±3 digits                        |
| SPEED MEASUREMENT           | 500-10000 min <sup>-1</sup>   | ±3.0 %, ±5 digits  |
| CLOSING ANGLE MEASUREMENT   | 0-120 °   | ±3.0 %, ±5 digits  |
| DUTY CYCLE MEASUREMENT      | 0-100 %   | ±3.0 %, ±5 digits  |
| FREQUENCY MEASUREMENT       | 0-200 kHz   | ±2.0 %, ±5 digits  |
| DIODE TEST                  | Supply current approx. 25 mA  |  |
| CONTINUITY TEST             | 0-45 Ω  |  |
| MAX. INPUT VOLTAGE          | 120 V DC / 50 V AC  |  |
| INPUT IMPEDANCE             | 10 MΩ (DCV), 4.5 MΩ (ACV)   |  |
| VOLTAGE BAND WIDTH AC       | 40-400 Hz   |  |
| OPERATING TEMPERATURE RANGE | 0-40 °C (32-104 °F)   |  |
| STORAGE TEMPERATURE RANGE   | -10-50 °C (14-122 °F)   |  |
| AUTO POWER-OFF              | 15 minutes  |  |
| DATA-HOLD FUNCTION          | Yes   |  |
| DIMENSIONS                  | 180 x 84 x 55 mm  |  |
| WEIGHT                      | 335 g inc. battery  |  |
| VOLTAGE SUPPLY              | 1 x 9 V block battery   |  |
| SCOPE OF DELIVERY           | inc. safety measurement lines, K-type sensors (0-180 °C) and carrying cases |  |

# TESTBOY

# 70

COATING THICKNESS TESTER WITH INTERCHANGEABLE PROBE



## THE SPECIFICATIONS

|                                 | TESTBOY 70                       |  |
|---------------------------------|----------------------------------|--|
| INDICATION                      | LCD with 4 digits                |  |
| MEASUREMENT RANGE               | 0-1250 $\mu\text{m}$<br>0-50 mil | $\pm 2.5 \mu\text{m}$ , $\pm 1-3 \%$<br>$\pm 1-3 \%$ |
| MINIMUM MEASURING AREA          | $\varnothing 5 \text{ mm}$       |  |
| MINIMUM CURVATURE RADIUS        | Fe: Convex 1.5 mm<br>NFe: 3 mm   |  |
| MINIMUM BASE MATERIAL THICKNESS | Fe: 0.5 mm<br>NFe: 0.3 mm        |  |
| OPERATING TEMPERATURE           | 0-40°C                           |  |
| STANDARD                        | EN 61010-1 (DIN VDE 0411)        |  |
| DIMENSIONS                      | 158 x 74 x 31 mm                 |  |
| WEIGHT                          | 220 g                            |  |
| VOLTAGE SUPPLY                  | 4 x 1.5 V AAA, LR03              |  |
| SCOPE OF DELIVERY               | inc. Fe probe and service case   |  |

## YOUR BENEFITS

- // Large LCD
- // Interchangeable probe for measurements on magnetic and non-magnetic metallic bases

The Testboy 70 coating thickness tester is a durable, splash-proof, high-precision measuring instrument and measures all non-magnetic coatings such as as paints, enamel, chrome, copper, zinc etc. on steel or iron. With its interchangeable probe, the Testboy 70 enables measurement of all insulating coatings on non-magnetic, metallic bases such as aluminium, copper or brass. Coating thickness testing is a central part of many applications including galvanizing and coating.

## COATING THICKNESS METER WITH COMBINATION PROBE



### THE SPECIFICATIONS

|                                 | TESTBOY 72                              |   |
|---------------------------------|---|---|
| INDICATION                      | LCD with 3 digits                       |   |
| MEASUREMENT RANGE               | 0-2000 $\mu\text{m}$<br>0-80 mil        | $\pm 2 \mu\text{m}$ , $\pm 3 \%$ ,<br>$\pm 0.1$ with $\pm 3 \%$ |
| MINIMUM MEASURING AREA          | $\varnothing 7 \text{ mm}$              |   |
| MINIMUM CURVATURE RADIUS        | Fe: Convex 1.5 mm<br>NFe: 3 mm          |   |
| MINIMUM BASE MATERIAL THICKNESS | Fe: 0.7 mm<br>NFe: 0.7 mm               |   |
| MEASURED VALUE MEMORY           | 10 values                               |   |
| OPERATING TEMPERATURE           | 0-40 °C                                 |   |
| STANDARD                        | EN 61010-1 (DIN VDE 0411)               |   |
| DIMENSIONS                      | 94 x 48 x 24.2 mm                       |   |
| WEIGHT                          | 72 g                                    |   |
| VOLTAGE SUPPLY                  | 1 x 1.5 V AAA, LR03                     |   |
| SCOPE OF DELIVERY               | inc. service case and calibration plate |   |

## YOUR BENEFITS

- // Combination probe for magnetic and non-magnetic bases
- // Measured value memory
- // Adjustable display alignment

The Testboy 72 coating thickness tester uses a combination probe to perform reliable measurements of all types of insulated coatings on magnetic and non-magnetic metallic bases. Switching is performed automatically. Self-calibration is performed using test films included in the scope of delivery. The integrated measured value memory stores the last ten measured values. The adjustable display alignment means that measurements can be performed under the most difficult of conditions.

# TESTBOY

## 74

COATING THICKNESS TESTER WITH LED DISPLAY



### THE SPECIFICATIONS

|                                 | TESTBOY 74                |            |
|---------------------------------|---------------------------|------------|
| INDICATION                      | Optical via 3 LEDs        |            |
| MEASUREMENT RANGE               | 0-400 $\mu\text{m}$       | $\pm 15\%$ |
| MINIMUM MEASURING AREA          | $\varnothing 7\text{ mm}$ |            |
| MINIMUM BASE MATERIAL THICKNESS | Fe: Convex 0.8 mm         |            |
| OPERATING TEMPERATURE           | 0-40°C                    |            |
| DIMENSIONS                      | 160 x 33 mm               |            |
| WEIGHT                          | 80 g                      |            |
| VOLTAGE SUPPLY                  | 1 x 12 V type V23         |            |

## YOUR BENEFITS

- // Clear LED display
- // Quick, uncomplicated checks

With its clear LED display, the Testboy 74 coating thickness tester permits the quick and easy control of all non-magnetic coatings such as paints, enamel, chrome, copper, zinc etc. on steel or iron. It is especially suitable for use in car workshops to perform quick checks on vehicles for previous accident damage.



## MATERIAL THICKNESS METER



### THE SPECIFICATIONS

|                         | TESTBOY 75   |          |
|-------------------------|--|----------|
| INDICATION              | LCD with 4 digits  |          |
| MEASUREMENT RANGE       | 1.2-200 mm   | ± 0.5 mm |
| RESOLUTION              | 0.1 mm   |          |
| SMALLEST MEASURING AREA | ø 5 mm   |          |
| RESONANCE FREQUENCY     | 500-9000 m/s   |          |
| MATERIALS               | Steel, aluminium, copper, brass, quartz glass, PVC, zinc, cast iron, polyethylene, grey cast iron etc. |          |
| OPERATING TEMPERATURE   | 0-50 °C  |          |
| STANDARD                | EN 61010-1 (DIN VDE 0411)  |          |
| DIMENSIONS              | 158 x 74 x 31 mm   |          |
| WEIGHT                  | 220 g  |          |
| VOLTAGE SUPPLY          | 3 x 1.5 V AAA, LR03  |          |
| SCOPE OF DELIVERY       | inc. ultrasonic sensor, glycerine and service case   |          |

## YOUR BENEFITS

- // Large measurement range
- // High accuracy of measurement
- // Adjustable resonance frequencies

The Testboy 75 material thickness meter serves the measurement of the material thickness of metals, plastics and glass. Using an ultrasonic sensor, the instrument is able to determine accurately the material thicknesses of steel, aluminium, copper, brass, quartz glass, PVC, zinc, cast iron, polyethylene and grey cast iron. The ability to set the resonance frequency means that other materials can be measured. The simple and safe handling and high precision of the Testboy 75 material thickness meter explains its success. It is suitable for many Quality Assurance applications in the car and industrial sector.

Thickness measurements using a material thickness meter are an important aspect of many production and material testing procedures. The thickness of acoustically conductive materials can be measured using ultrasonic testing. It is also possible to ascertain interior and exterior material defects in conforming materials and hollow articles.

# TESTBOY CAR TESTER

VOLTAGE TESTER

3-48 V  
DC



## THE SPECIFICATIONS

|                   | TESTBOY CAR TESTER                      |
|-------------------|---|
| INDICATION        | Optical via 4 LEDs                      |
| MEASUREMENT RANGE | 3-48 V DC                               |
| STANDARD          | EN 61010-1:2010;<br>EN 61010-2-030:2010 |
| DIMENSIONS        | 145 x 25 x 16 mm                        |
| WEIGHT            | 120 g                                   |
| VOLTAGE SUPPLY    | via measurement object                  |

## YOUR BENEFITS

- // Polarity display
- // Integrated piercing probe

The Testboy Car Tester is ideal for troubleshooting from 3 to 48 V DC in the car, commercial vehicle and all other sectors. Four LEDs indicate the voltage and polarity. The integrated piercing probe facilitates the testing of lines. The crocodile clips mean no problems in establishing the earth connection.

**Compro**<sup>®</sup>  
ELECTRONIC GMBH  
*Light & Sound*



Wissen, was los ist!  
Akustische und optische Signalgeber

We know what's going on!  
Acoustic and optical signaling



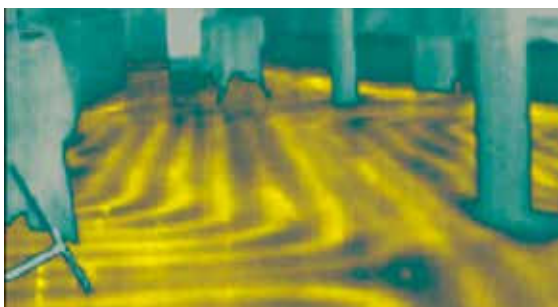
[www.compro.de](http://www.compro.de)

MEHR ALS  
**25**  
JAHRE

A background image showing a thermal scan with a color gradient from blue (cooler) to red (warmer). The scan shows various shapes and patterns, including a large, irregularly shaped area of high temperature (red and yellow) on the right side, and a smaller, more circular area of high temperature in the upper right. The overall image has a soft, blurred appearance.

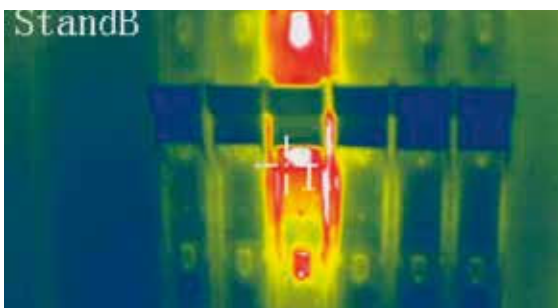
# OUR THERMOGRAPHY INSTRUMENTS

## AS OF APPLICATIONS



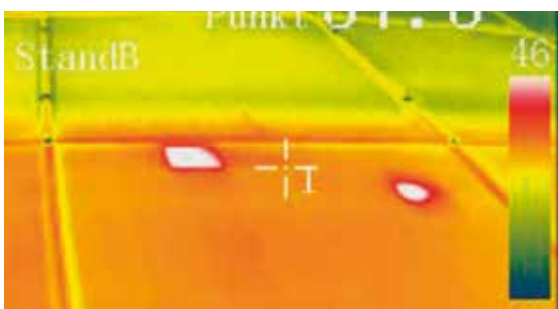
### HEATING AND PLUMBING

The detection of sources of heat or cold, e.g. leak detection in the event of a burst pipe, underfloor heating, panel heating, etc.



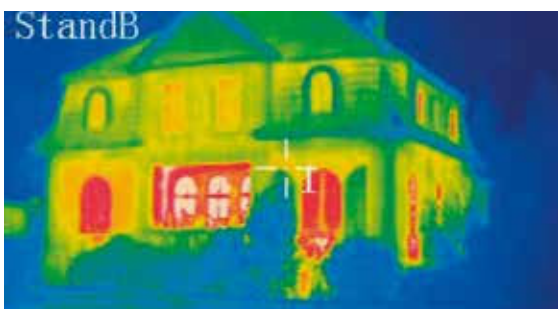
### ELECTRICAL ENGINEERING, ELECTRONICS

Functional monitoring of individual components, e.g. switching cabinet thermal imaging, cable detection



### PHOTOVOLTAICS

Checking installed panels, e.g. hotspot, poor contacts, overheating of the inverter



### CONSTRUCTION INDUSTRY, BUILDING MATERIALS

Building thermal imaging, thermal bridges, checking of insulation, windows, mould, etc.

# TESTBOY

## THERMAL IMAGERS

All objects with a temperature greater than absolute zero emit infrared radiation. Infrared radiation cannot be seen by the naked human eye. Thermal imagers can convert infrared radiation into electric signals, thereby making them visible. As almost every component that absorbs or transmits energy heats up prior to outage, infrared thermography represents one of the most effective and reliable technologies for performing preventive maintenance. It is a quick, thorough and safe procedure with which to identify problems before malfunctions occur.

Whether used in industrial plants, switch cabinets, controllers or buildings: Testboy thermal imagers provide powerful options for diagnosis. Using our imagers for the early identification of problems and error sources brings a range of advantages, including the prevention of production downtimes and fires and can bring energy savings. The high-resolution sensors in the Testboy thermal imager enable detailed image evaluation. Using the TV 309, TV 304, TV 294 Digital and TV 295 models even enable on-site evaluation.

---

# TESTBOY

## REPORTER- SOFTWARE

Professional report creation on infrared and building inspections

Developed by thermal imaging experts, the Testboy Reporter software has been optimised to produce comprehensive and meaningful inspection reports quickly. The look, structure and information content of the report can be saved individually by the user as a template with the required diagrams, text elements and company logo. The radiometric images – each pixel has a saved value – can be adapted, thereby enabling measurement points and line profiles to be set or the temperature scale or colour palette to be changed. The evaluations calculated in the report are adapted automatically.

# TESTBOY

## TV 292

IR THERMAL IMAGER – VIEWING THE  
INVISIBLE IN THE ENTRY LEVEL



### THE SPECIFICATIONS

|  | TESTBOY TV 292  |
|--|---|
| RESOLUTION                                 | 60 x 60 pixels  |
| TEMPERATURE RESOLUTION                     | (NETD) 0.15 °C / 0.27 °F  |
| FIELD OF VIEW (FOV)<br>MIN. FOCUS DISTANCE | 20° x 20°   0.5 m fix   |
| SENSOR DATA CAPTURE                        | 6 Hz  |
| SPECTRAL RANGE                             | 8 – 14 µm   |
| LC DISPLAY                                 | 2.4" -Colour-LCD  |
| CCD CAMERA                                 | 300.000 pixels  |
| TEMPERATURE RANGE                          | -20 – 300 °C / -4 – 572 °F  |
| ACCURACY                                   | ±2 °C or ±2 % (the greater value applies)   |
| EMISSIVITY CORRECTION                      | Variable from 0.1 to 1.0 (in 0.01 increments)   |
| COLOUR PALETTE                             | 6 (iron bow, rainbow, rainbow higher contrast, grey scales (white hot) and grey scales (black hot)) |
| IMAGE                                      | Fading the visual depiction with the infrared image in 25-% steps                                   |
| OTHER SETTINGS                             | Date, time, unit of temperature   |
| STORAGE MEDIUM                             | MicroSD card  |
| DATA FORMAT                                | BMP   |
| VOLTAGE SUPPLY                             | 4x 1.5V AA  |
| ENERGY SAVING FUNCTION                     | 8 – 14 µm   |
| OPERATING TEMPERATURE                      | -5 – 40 °C / 23 – 104 °F  |
| HUMIDITY                                   | ≤ 90 % not condensing   |
| STORAGE TEMPERATURE                        | -20 – 55 °C / -4 – 131 °F   |
| DIMENSIONS                                 | 223 x 88 x 65 mm  |
| WEIGHT                                     | 310 g   |
| SCOPE OF DELIVERY                          | inc. carrying case, SD card   |

## YOUR BENEFITS

- // Digital camera for image overlay
- // Integrated colour display
- // Easy operation
- // Universal deployment, robust and reliable

We may not have worked out how to square the circle, but we have invented an infrared thermometer with thermal imager features: the Testboy TV 292. This thermal imager is the successor to the TV 291, which "Motor & Maschine" found to be "excellent". All this at a price which makes for an easy purchase decision. The digital overlay of a real image camera in 25% steps makes for very easy handling even for the novice. It provides all the advantages of thermal imaging technology in the location of temperature problems from

-20 to 300° C, which remain hidden to typical IR thermometers. The user can select from up to six colour palettes. The Testboy TV 292 is suited to preventive maintenance, process monitoring, leak detection and the localisation of heating pipes. The installed digital camera ensures image overlay via the IR image and has an integrated 2.4" colour LCD display. A variable micro SD card keeps the transfer of the saved data to the memory system classic.

# TESTBOY

## TV 294 DIGITAL

IR THERMAL IMAGER WITH 50HZ  
TECHNOLOGY

incl.  
Software

50 Hz



## AREAS OF APPLICATION

- // Preventive maintenance
- // Leak detection and the localisation of heating pipes
- // Building thermography
- // Process monitoring
- // The localisation of defective panels in PV installations during operation

## YOUR BENEFITS

- // 50-Hz technology
- // Digital camera for image overlay
- // Digital panorama view
- // Language recording voice
- // On-site analysis
- // Alarm function
- // Two sensor resolutions available
- // Fall height 2 m
- // Testboy Reporter Software

The robust construction of the universally-deployable and affordable Testboy TV 294 Digital thermal imager means that it can withstand even rough conditions. The TV 294-160 has a 160 x 120 pixel resolution; the TV294-384 even provides an exceptional 384 x 288 pixel resolution. Their 50-Hz technology delivers clear images in real time and produces thermographical recordings of even fast movements during the process. A digital camera performs actual image overlay. The comprehensive measuring functions enable analysis to be performed directly on site. These models come equipped with 11 colour palettes, 4 mobile measuring points, 3 mobile measuring surfaces, 2 linear measurements and isothermal analysis. Data is saved on a 2 GB MicroSD card and is delivered with complete "Testboy-Reporter" processing software.



## THE SPECIFICATIONS

| IMAGING PERFORMANCE   | TESTBOY TV 294 - 160 DIGITAL   | TV 294 - 384 DIGITAL |
|---|--|----------------------|
| SENSOR TYPE   | Focal Plane Array (FPA), uncooled microbolometer   |                      |
| RESOLUTION  | 160 x 120 pixels   | 384 x 288 pixels     |
| PIXEL SIZE   SENSOR SIZE                                      | 25 µm   4 x 3 mm   | 25 µm   9.6 x 7.2 mm |
| SPATIAL RESOLUTION (IFOV)                                     | 2.73 mrad  | 1.37 mrad            |
| TEMPERATURE RESOLUTION (NETD)                                 | ≤0.08 °C at 30 °C  | ≤0.06 °C at 30 °C    |
| FIELD OF VIEW (FOV)   MIN. FOCUS DISTANCE                     | 25° x 19°   0.1 m  |                      |
| SENSOR DATA CAPTURE   | 50 Hz  |                      |
| SPECTRAL RANGE  | 8–14 µm  |                      |
| FOCUS   ZOOM  | manual   2x electronic   |                      |
| IMAGE/DISPLAY   |  |                      |
| LC DISPLAY  | 2.7"-Colour-LCD  |                      |
| IMAGE FREQUENCY   | 50/60 Hz   |                      |
| CCD CAMERA  | 1.3 megapixel  |                      |
| PRESENTATION  | Panorama view  |                      |
| MEASUREMENT CHARACTERISTICS                                   |  |                      |
| TEMPERATURE RANGE   | -20–350 °C   |                      |
| ACCURACY  | ±2 °C or ±2 % (the greater value applies)  |                      |
| EMISSIVITY CORRECTION   | Variable from 0.1 to 1.0 (in 0.01 increments)  |                      |
| MOVEABLE MEASURING POINTS   SURFACE AREAS<br>LINE MEASUREMENT | 4   3   2  |                      |
| SURFACES MIN.-MAX. TEMPERATURE   AVERAGE VALUE                | yes   yes  |                      |
| ISOTHERM ANALYSIS/TEMPERATURE DIFFERENCE                      | yes   yes  |                      |
| ALARM ACOUSTIC   OPTICAL                                      | yes   yes  |                      |
| COLOUR PALETTE  | 11   |                      |
| IMAGE SETTINGS  | automatic/manual (enhancement and brightness)  |                      |
| AMBIENT TEMPERATURE INFLUENCE                                 | Automatic correction in accordance with user entry   |                      |
| CORRECTION FOR ATMOSPHERIC RADIATION                          | Automatic correction in accordance with user entry   |                      |
| OTHER SETTINGS  | Date, time, unit of temperature, language  |                      |
| IMAGE STORAGE   |  |                      |
| STORAGE MEDIUM  | MicroSD card 2 GB  |                      |
| STORAGE   | Automatic/manual single image storage  |                      |
| DATA FORMAT   | JPEG, with thermal measured data   |                      |
| VOICE ANNOTATIONS   | Up to 60 s per image   |                      |
| VOLTAGE SUPPLY  |  |                      |
| BATTERY OPERATION   | Li-Ion battery, operating time up to 3 h per battery, intelligent charger  |                      |
| EXTERNAL VOLTAGE SUPPLY                                       | 10–15 V DC   |                      |
| ENERGY SAVING FUNCTION  | Automatic power-off, sleep mode adjustable   |                      |
| INTERFACES  |  |                      |
| VIDEO OUTPUT   AUDIO OUTPUT                                   | PAL/NTSC   3.5 mm jack plug  |                      |
| USB   | Yes  |                      |
| ENVIRONMENTAL CONDITIONS                                      |  |                      |
| FALL HEIGHT   | Up to 2 m  |                      |
| OPERATING TEMPERATURE   | -15–50 °C  |                      |
| HUMIDITY  | ≤ 90 % not condensing  |                      |
| PROTECTION CLASS  | IP54   |                      |
| STORAGE TEMPERATURE   | - 25–60 °C   |                      |
| PHYSICAL PROPERTIES   |  |                      |
| DIMENSIONS  | 245 x 105 x 230 mm   |                      |
| WEIGHT (EXC. BATTERY)   | 1 kg   |                      |
| TRIPOD ATTACHMENT   | 1/4"-20  |                      |
| LASER POINTER   | Class 2, 1 mW / 635 nm (red)   |                      |
| EQUIPMENT   |  |                      |
| SCOPE OF DELIVERY   | Transport case, 2 batteries, charger with power supply unit, USB cable, lens cover, SD card, light shield, ear phones, audio and video cables, operating manual, Testboy Reporter software |                      |
| ACCESSORIES (OPTIONAL)  | Car charger adapter, wide angle lens, telephoto lens   |                      |

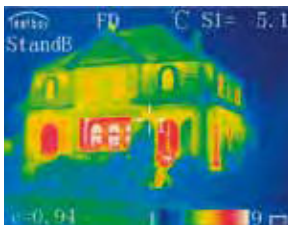
# TESTBOY

## TV 295 TOUCH

IR THERMAL IMAGER WITH 50HZ  
TECHNOLOGY

incl.  
Software

50 Hz



## AREAS OF APPLICATION

- // Preventive maintenance
- // Leak detection and localisation of heating pipes
- // Building thermal imaging
- // Process monitoring in real time
- // Research and development
- // PCB analysis from a short distance
- // Detection of defective panels of PV installations during operation

## YOUR BENEFITS

- // Touch screen
- // Bluetooth
- // Ethernet interface
- // LED light and laser pointer
- // Digital camera for image overlay
- // On-site analysis
- // Alarm function
- // Testboy reporter software

The innovative TV 295 Touch thermal imager is fitted with a 3.5 inch touch screen, LED lighting and a laser pointer; its robust construction enables it to withstand even rough conditions. The TV 295-160 has a 160 x 120 pixel resolution; the TV295-384 provides an exceptional 384 x 288 pixel resolution. The 50 Hz technology and Bluetooth® and Ethernet interface of the instruments mean that they can be subject to various deployments and are suitable for performing real time process monitoring. A digital camera performs actual image overlay. The comprehensive measuring functions provided by the devices enable analysis to be performed directly on site. The devices are equipped with 11 colour palettes, 5 mobile measuring points and 5 mobile measuring surfaces, 2 linear measurements and isothermal analysis. Data is saved on a 2 GB MicroSD card and is delivered with complete "Testboy-Reporter" processing software.

## THE SPECIFICATIONS

| IMAGING PERFORMANCE   | TESTBOY TV 295 - 160 TOUCH   | TV 295 - 384 TOUCH                 |
|---|--|------------------------------------|
| SENSOR TYPE   | Focal Plane Array (FPA), uncooled microbolometer   |                                    |
| RESOLUTION  | 160 x 120 pixels   | 384 x 288 pixels                   |
| PIXEL SIZE   SENSOR SIZE                                      | 25 µm   4 x 3 mm   | 25 µm   9.6 x 7.2 mm               |
| SPATIAL RESOLUTION (IFOV)                                     | 2.73 mrad  | 1.37 mrad                          |
| TEMPERATURE RESOLUTION (NETD)                                 | ≤0.08 °C at 30 °C  | ≤0.06 °C at 30 °C                  |
| FIELD OF VIEW (FOV)   MIN. FOCUS DISTANCE                     | 25° x 19°   0.5 m  |                                    |
| SENSOR DATA CAPTURE   | 50 Hz  |                                    |
| SPECTRAL RANGE  | 8–14 µm  |                                    |
| FOCUS   ZOOM  | Manual   2–4x electronic   |                                    |
| IMAGE/DISPLAY   |  |                                    |
| LC DISPLAY  | 3.5" colour LCD (640 x 480 pixels) with touch function   |                                    |
| IMAGE FREQUENCY   | 50/60 Hz   |                                    |
| CCD CAMERA  | 3 megapixels (inc. LED light)  |                                    |
| PRESENTATION  | Overlay of IR image and CCD image (fusion), panorama view  |                                    |
| MEASUREMENT CHARACTERISTICS                                   |  |                                    |
| TEMPERATURE RANGE   | -20–350 °C (option up to +1000 °C)   | -20–600 °C (option up to +1200 °C) |
| ACCURACY  | ±2 °C or ±2 % (the greater value applies)  |                                    |
| EMISSIVITY CORRECTION   | Variable from 0.1 to 1.0 (in 0.01 increments)  |                                    |
| MOVEABLE MEASURING POINTS   SURFACE AREAS<br>LINE MEASUREMENT | 5   5   2  |                                    |
| SURFACES MIN.-MAX. TEMPERATURE   AVERAGE VALUE                | yes   yes  |                                    |
| ISOTHERM ANALYSIS/TEMPERATURE DIFFERENCE                      | yes   yes  |                                    |
| ALARM ACOUSTIC   OPTICAL                                      | yes   yes  |                                    |
| COLOUR PALETTE  | 11   |                                    |
| IMAGE SETTINGS  | automatic/manual (enhancement and brightness)  |                                    |
| AMBIENT TEMPERATURE INFLUENCE                                 | Automatic correction in accordance with user entry   |                                    |
| CORRECTION FOR ATMOSPHERIC RADIATION                          | Automatic correction in accordance with user entry   |                                    |
| OTHER SETTINGS  | Date, time, unit of temperature, language  |                                    |
| IMAGE STORAGE   |  |                                    |
| STORAGE MEDIUM  | MicroSD card 8 GB (max. 32 GB)   |                                    |
| STORAGE   | Automatic/manual single image storage  |                                    |
| DATA FORMAT   | JPEG, with thermal measured data; H.264 video transfer via network   |                                    |
| VOICE ANNOTATIONS   | Up to 60 s per image   |                                    |
| VOLTAGE SUPPLY  |  |                                    |
| BATTERY OPERATION   | Li-Ion battery, operating time up to 3 h per battery, intelligent charger  |                                    |
| EXTERNAL VOLTAGE SUPPLY                                       | 10–15 V DC   |                                    |
| ENERGY SAVING FUNCTION  | Automatic power-off, sleep mode adjustable   |                                    |
| INTERFACES  |  |                                    |
| VIDEO OUTPUT   AUDIO OUTPUT                                   | PAL/NTSC   3.5 mm jack plug  |                                    |
| USB   | yes   yes   yes  |                                    |
| ENVIRONMENTAL CONDITIONS                                      |  |                                    |
| FALL HEIGHT   | Up to 2 m  |                                    |
| OPERATING TEMPERATURE   | -15–50 °C  |                                    |
| HUMIDITY  | ≤ 90 % not condensing  |                                    |
| PROTECTION CLASS  | IP54   |                                    |
| STORAGE TEMPERATURE   | - 25–60 °C   |                                    |
| PHYSICAL PROPERTIES   |  |                                    |
| DIMENSIONS  | 245 x 105 x 230 mm   |                                    |
| WEIGHT (EXC. BATTERY)   | 1 kg   |                                    |
| TRIPOD ATTACHMENT   | 1/4"–20  |                                    |
| LASER POINTER   | Class 2, 1 mW / 635 nm (red)   |                                    |
| EQUIPMENT   |  |                                    |
| SCOPE OF DELIVERY   | Transport case, 2 batteries, charger with power supply unit, USB cable, lens cover, SD card, light shield, ear phones, audio and video cables, operating manual, Testboy Reporter software |                                    |
| ACCESSORIES (OPTIONAL)  | Car charger adapter, wide angle lens, telephoto lens   |                                    |



# OUR ACCESSORIES

## ACCESSORIES

### CROCODILE CLIPS

Testboy 65, Testboy Pocket 100, Testboy 2200, Testboy 3000, Testboy Pocket, Testboy 20 Plus, Testboy TV 216N, Testboy TV 215N, Testboy TV 225, Testboy TV 460, Testboy TV 470, Testboy TV 410N, Testboy 313 and Testboy 312



### TEST LEAD SET CAT III

Testboy 20 Plus, Testboy 65, Testboy Pocket 100, Testboy TV 216N, Testboy TV 215N, Testboy TV 225, Testboy 312, Testboy 313, Testboy 2200, Testboy TV 460 and Testboy TV 470



### GS-38 PROBES

Testboy Profi III LED and Testboy Profi III LCD



### TEST LEAD SET CAT IV

Testboy 3000



### REMOVABLE PROBES

Testboy Profi III LED and Testboy Profi III LCD



### CASES

Two-pole voltage tester, continuity tester and multimeter



### ADAPTER FOR K-TYPE SENSOR

Testboy 313, Testboy 65



### K-TYPE SENSOR

Testboy TV 325, Testboy 313, Testboy 65, Testboy TV 326, Testboy TV 327

1| TP-K02 immersion probe  
Measurement range: -50-700°C  
Tolerance: ±2.2°C

2| TP-K03 surface probe, straight  
Measurement range: -50-400°C  
Tolerance: ±2.2°C

3| TP-K04 penetration probe  
Measurement range: -50-600°C  
Tolerance: ±2.2°C

4| TP-K05 surface probe, curved  
Measurement range: -50-400°C  
Tolerance: ±2.2°C

5| TP-K06 room probe  
Measurement range: -50-800°C  
Tolerance: ±2.2°C



# TESTBOY MARKETING

## TESTBOY DISPLAY

- // Display for 4 Testboy 313 Digital multimeter, 10 Testboy Profi III LED/LCD or 21 non-contact voltage testers from 12 V
- // Individual configuration possible



## TESTBOY PACKAGE

- // Display for 21 non-contact voltage testers from 12 V
- // Stand-up display
- // Individual configuration possible (e.g. TB 110, 130, 114)



## TESTBOY SALES DISPLAY

- // Top technology from Testboy to handle
- // The best-possible presentation of the instruments
- // intercultural configuration possible
- // Depicted examples:  
 2 Testboy Profi III LED, 2 Testboy Profi III LCD,  
 1 Testboy 40 Plus, 2 Testboy 20 Plus,  
 1 Testboy Light 500, 2 Testboy 3000,  
 1 Testboy Pocket, 1 Testboy 312,  
 1 Testboy TV 216N, 1 Testboy 218,  
 1 Testboy 26, 1 Testboy 110, 1 Testboy 113,  
 1 Testboy TV 325







CATALOGUE RECEIVED FROM:



Leuvensesteenweg 607  
1930 Zaventem  
T: 02 - 757 92 44  
F: 02 - 757 92 64  
verkoop@euro-index.be  
www.euro-index.be



# Service van EURO-INDEX

EURO-INDEX verleent service op alle meetinstrumenten uit haar leveringspakket en biedt de faciliteiten, kennis en hoog gekwalificeerd personeel voor (preventief) onderhoud, reparatie en kalibratie van uw meetinstrumenten.

## Geautoriseerd Service Centrum

EURO-INDEX is van alle vertegenwoordigde merken een Geautoriseerd Service Centrum.

Dit betekent dat uw instrumenten worden behandeld door goed opgeleid en kundig personeel, dat beschikt over de juiste gereedschappen en software. Er worden uitsluitend originele onderdelen gebruikt en de garantie van uw instrument, evenals de certificering (ATEX, EN50379, etc.) blijven intact.

## Service- en kalibratielaboratorium

EURO-INDEX beschikt over een bijzonder modern service- en kalibratielaboratorium met RvA accreditatie naar NEN-EN-ISO/IEC 17025. Deze accreditatie geldt voor verschillende grootheden, zoals gespecificeerd in de scope bij accreditatienummer K105.



## KWS®

KWS is een uniek servicesysteem voor uw meetinstrumenten met periodiek onderhoud en kalibratie. Veel zaken worden voor u geregeld, zodat u zonder zorgen gebruik kunt maken van uw meetinstrumenten. De kosten zijn laag en voorspelbaar.

## Digitale toegang tot uw kalibratiecertificaten met Mijn KWS

Via het Mijn KWS webportal heeft u altijd en overal toegang tot uw kalibratiecertificaten en gerelateerde documenten.

## Verhuur van meetinstrumenten

- Uitgebreid assortiment
- Deskundig advies
- Instrumenten worden geleverd met accessoirepakket en herleidbaar kalibratiecertificaat

## EURO-INDEX Academy

- Producttrainingen (individueel en klassikaal)
- Seminars
- Demonstratie- en instructievideo's

## Bekijk de video op ons YouTube kanaal en ontdek alles over KWS



Servicebalie



Kalibratie rookgasanalyse



Seminars en workshops



Kalibratie thermografie

Wijzigingen voorbehouden EURO-INDEX® VL 18001

Het Bluetooth® woord- en beeldmerk zijn eigendom van Bluetooth SIG, Inc. Gebruik van deze merken door EURO-INDEX geschiedt onder licentie.



**BELGIË**  
Leuvensesteenweg 607  
1930 Zaventem  
T: 02 - 757 92 44  
F: 02 - 757 92 64  
info@euro-index.be  
www.euro-index.be

**NEDERLAND**  
Rivium 2e straat 12  
2909 LG Capelle a/d IJssel  
T: +31 - (0)10 - 2 888 000  
F: +31 - (0)10 - 2 888 010  
verkoop@euro-index.nl  
www.euro-index.nl

